

Chard

— ESTATE AGENTS —



Peterborough Road, SW6

£900,000

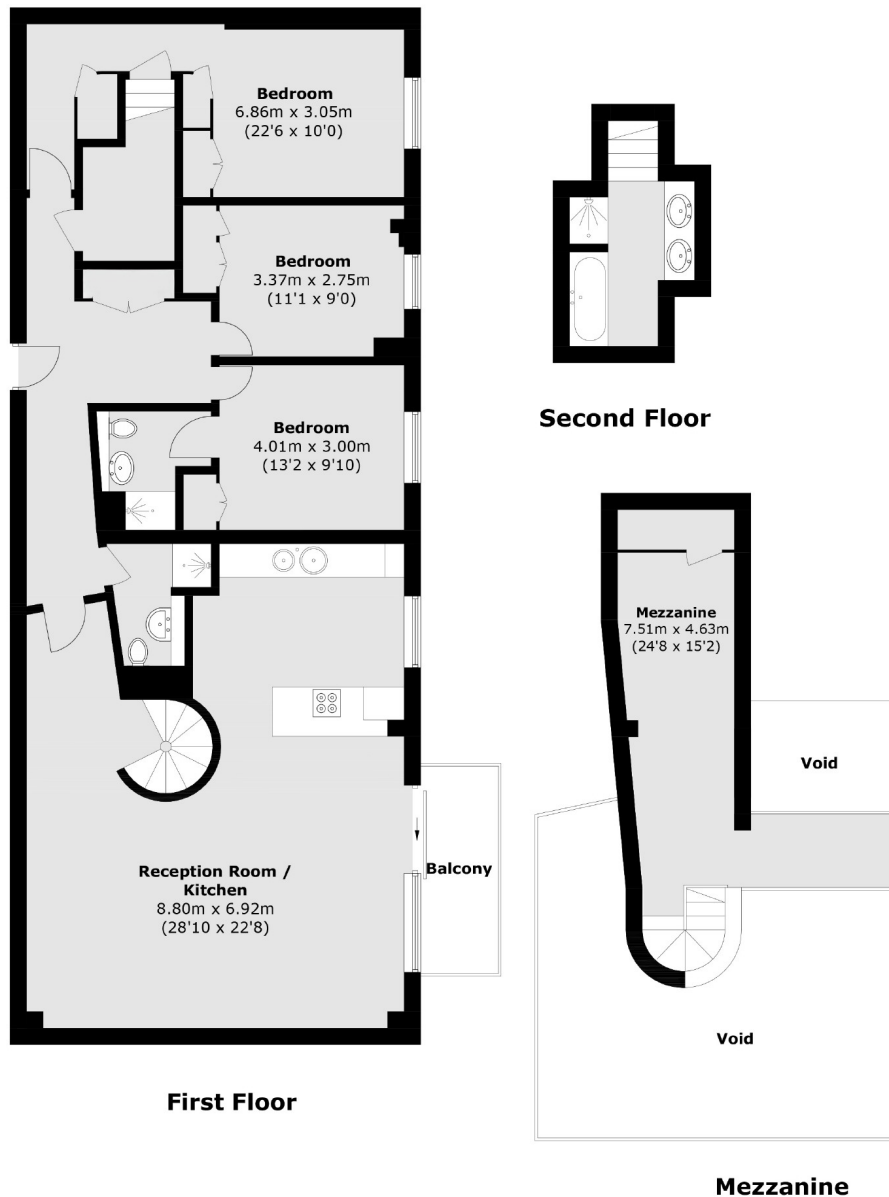
This three bedroom, two bathroom apartment with open plan kitchen/living space is located close to Hurlingham Park. This property would make a wonderful home or investment.

The Piper Building is a popular development situated by Wandsworth Bridge and adjacent to the River Thames. The green spaces of both South Park and Hurlingham Park are close by. Wandsworth Town station is a short walk away from the property.

- Three Bedrooms • Two Bathrooms • Balcony •
- Open Plan • Concierge • Hurlingham Park •

Chard

— ESTATE AGENTS —



Total area (approx.): 151.5 sq. m (1,630.7 sq. ft)
Balcony: 5.3 sq. m (57.0 sq. ft)

Chard Fulham
656 Fulham Road,
London, SW6 5RX
020 7731 5115
fulhamsales@chard.co.uk

Energy Rating: E. We aim to make our particulars both accurate and reliable. However they are not guaranteed; nor do they form part of an offer or contract. If you require clarification on any points then please contact us, especially if you're traveling some distance to view. Please note that appliances and heating systems have not been tested and therefore no warranties can be given as to their good working order.