

Chard

— ESTATE AGENTS —



Niton Street, SW6

£825,000

This is an excellent opportunity to purchase an attractive two bedroom garden flat located in the popular Alphabet Streets in Fulham. This property provides an open plan kitchen/living room which leads onto a private rear garden and offers potential to modernise and extend.



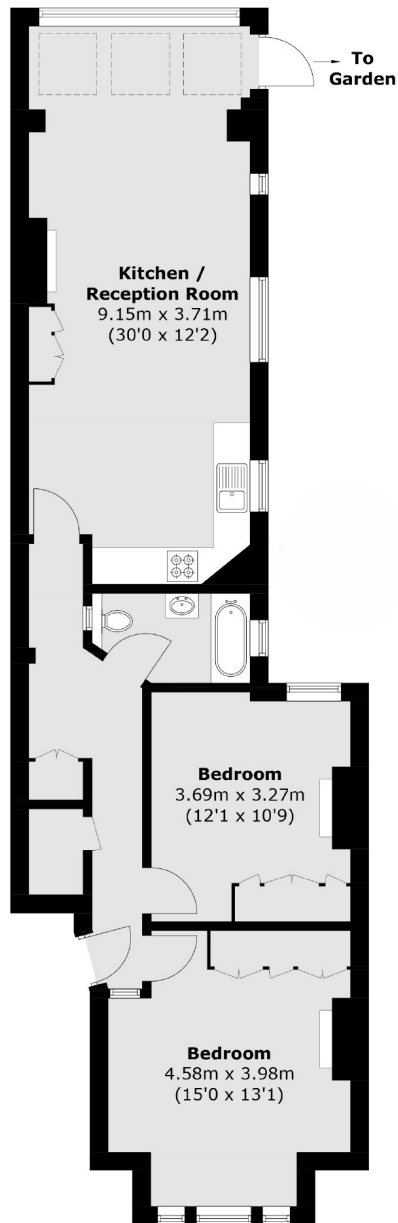
Niton Street is an attractive residential street close to Bishops Park with many shopping and restaurant amenities close by on the Fulham Road and in Parsons Green. The property offers desirable transport links at Fulham Palace Road, Hammersmith and Putney Bridge.

- Two Bedrooms • One Bathroom • Private Garden •
- Potential to Modernise • Ground Floor • Period Features •



Chard

— ESTATE AGENTS —



Total area (approx.): 76.5 sq. m (823.4 sq. ft)

Chard Fulham
656 Fulham Road,
London, SW6 5RX
020 7731 5115
fulhamsales@chard.co.uk

Energy Rating: C. We aim to make our particulars both accurate and reliable. However they are not guaranteed; nor do they form part of an offer or contract. If you require clarification on any points then please contact us, especially if you're traveling some distance to view. Please note that appliances and heating systems have not been tested and therefore no warranties can be given as to their good working order.