

# Chard

— ESTATE AGENTS —



## Edith Road, W14

£625,000

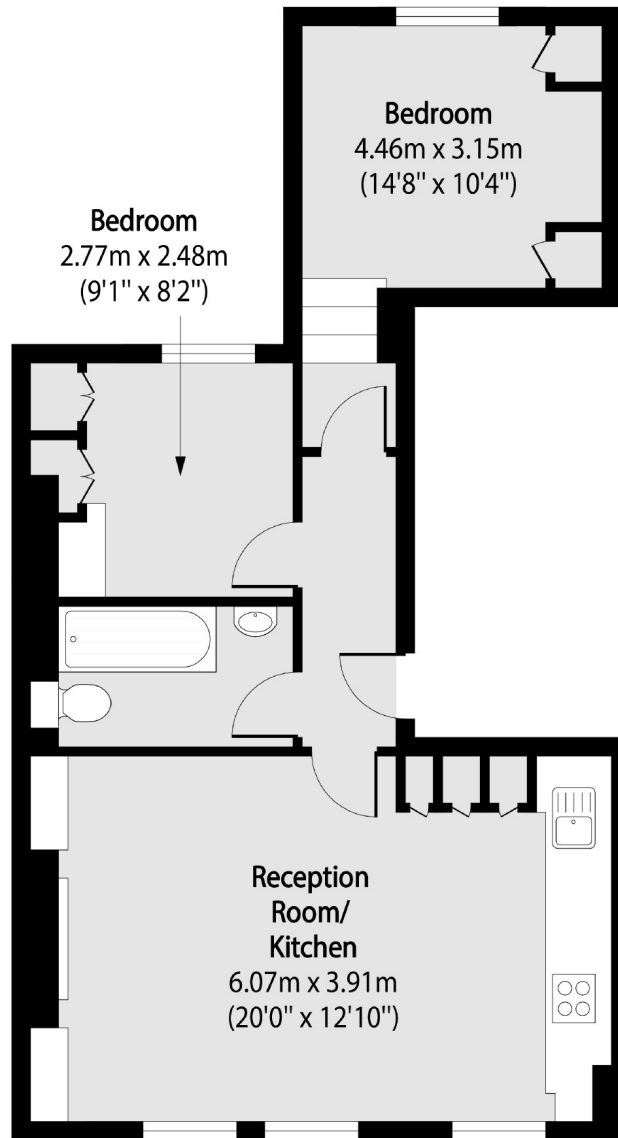
A beautifully finished two bedroom flat on a desirable road in the Barons Court area. This property benefits from period features, high ceilings, plenty of light, an open plan kitchen/living space and bespoke built in storage throughout.

Edith Road is a quiet residential street situated just moments from Barons Court, West Kensington, Kensington Olympia, and Hammersmith with a variety of shops, pubs and restaurants close by.

- Two Bedrooms • One Bathroom • Open Plan •
- Recently Refurbished • Ample Storage • West Kensington •

# Chard

— ESTATE AGENTS —



Total area (approx): 50.20 sq m (540 sq. ft)

Chard Fulham  
656 Fulham Road,  
London, SW6 5RX  
020 7731 5115  
fulhamsales@chard.co.uk

Energy Rating: . We aim to make our particulars both accurate and reliable. However they are not guaranteed; nor do they form part of an offer or contract. If you require clarification on any points then please contact us, especially if you're traveling some distance to view. Please note that appliances and heating systems have not been tested and therefore no warranties can be given as to their good working order.