

Chard

— ESTATE AGENTS —



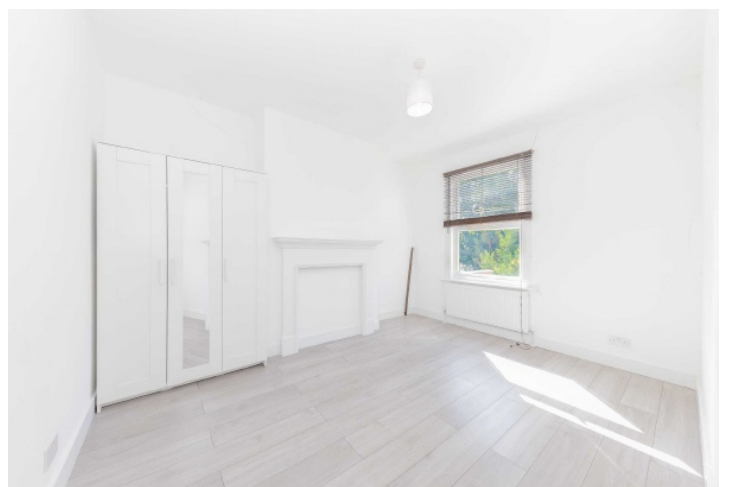
Rosedew Road, W6

£762 pw (£3,300 pcm)

This three bedroom house on a quiet street in Hammersmith is perfect for a family. Open plan kitchen, garden and separate reception room offers ample living space on the ground floor. The first floor has two good size double bedrooms, family bathroom, and third room perfect for a study.

The location of this property is highly sought after for the proximity to transport links and the river, as well as the famous restaurants and gastropubs locally such as The Crabtree and The River Cafe.

- Three Bedrooms • Garden • Open Plan •
- Wooden Floors • Hammersmith • House •



Chard Fulham
656 Fulham Road,
London, SW6 5RX
020 7384 1400
fulhamlettings@chard.co.uk



chard.co.uk