

Chard

Lettings



Columbia Gardens, SW6

£1,350 pw (£5850 pcm)

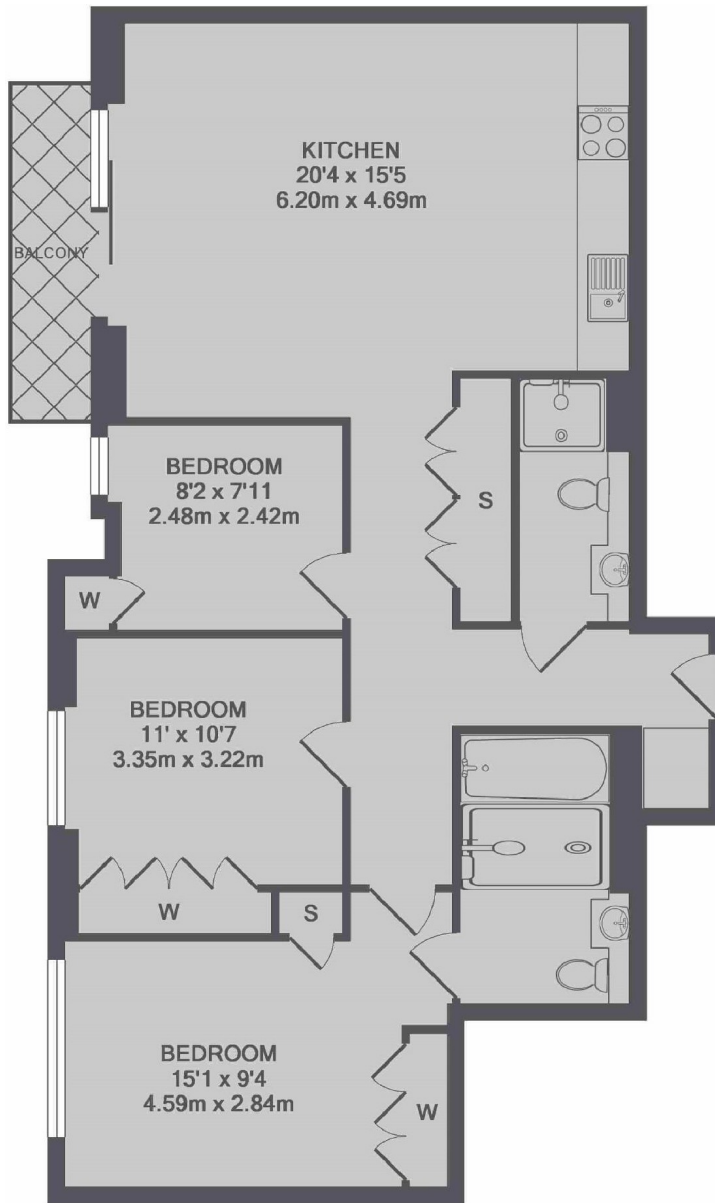
This three bedroom, two bathroom apartment has been finished to the highest specification. The property has a large open plan reception room with a modern integrated kitchen, the property also has a private balcony with fantastic views into central London.

The Lillie Square development is well situated close to Lillie Road with good bus links into the city and West Brompton station. Fulham Broadway is also nearby with many local amenities, restaurants and bars.

- Three Bedrooms • Two Bathrooms • Private Balcony •
- Residents Pool • Private Parking • 24 Hour Concierge •

Chard

Lettings



TOTAL APPROX. FLOOR AREA 914 SQ.FT. (84.9 SQ.M.)

Chard Fulham
5 Harwood Road,
London, SW6 4QP
020 7384 1400
fulhamlettings@chard.co.uk

Energy Rating: . We aim to make our particulars both accurate and reliable. However they are not guaranteed; nor do they form part of an offer or contract. If you require clarification on any points then please contact us, especially if you're traveling some distance to view. Please note that appliances and heating systems have not been tested and therefore no warranties can be given as to their good working order.