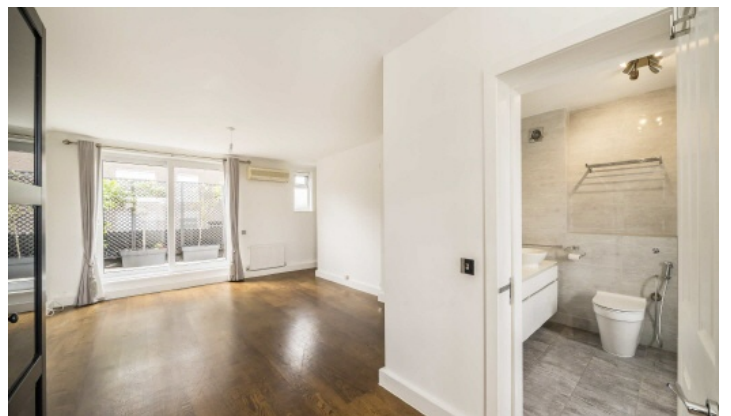


Chard

— ESTATE AGENTS —



Holyport Road, SW6

£1,096 pw (£,4749 pcm)

An immaculate four bedroom house set out over four floors, benefitting from a spacious reception room leading out to a patio garden in the heart of Fulham



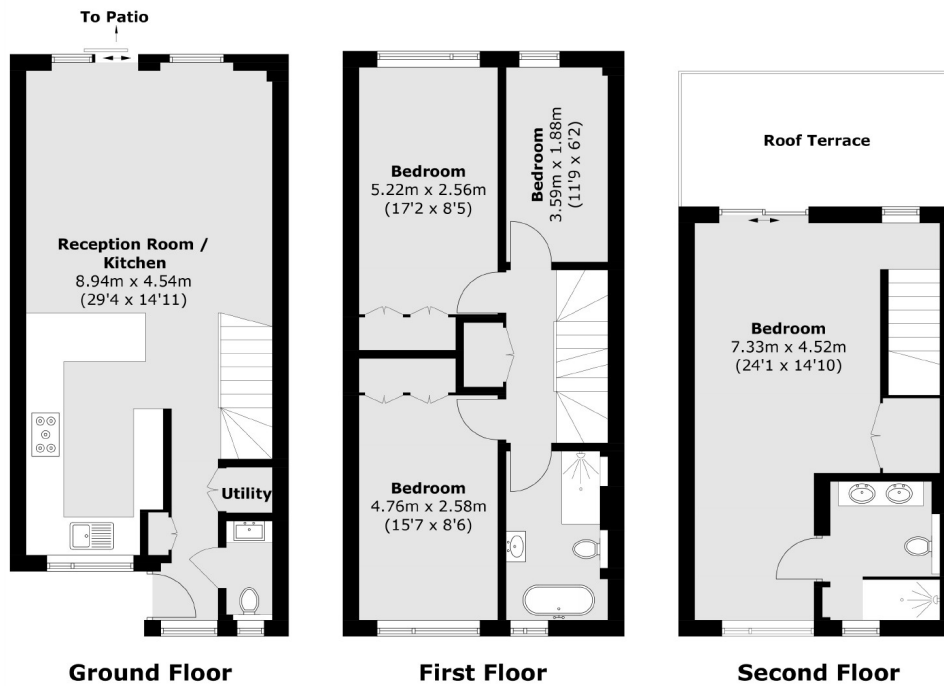
Ideally located in the well know "Alphabet Streets" of Fulham, offeriing local access to shops and amenities including transport links to central London

- Four Bedrooms • Two Bathrooms • Patio •
- Roof Terrace • Purpose Built • River Views •



Chard

— ESTATE AGENTS —



Total area (approx.): 123.8 sq. m (1,332.5 sq. ft)
Roof Terrace : 12.2 sq. m (131.3 sq. ft)

Chard Fulham
656 Fulham Road,
London, SW6 5RX
020 7384 1400
fulhamlettings@chard.co.uk

Energy Rating: . We aim to make our particulars both accurate and reliable. However they are not guaranteed; nor do they form part of an offer or contract. If you require clarification on any points then please contact us, especially if you're traveling some distance to view. Please note that appliances and heating systems have not been tested and therefore no warranties can be given as to their good working order.