

Chard

— ESTATE AGENTS —



Greyhound Road, W6

£646 pw (£2800 pcm)

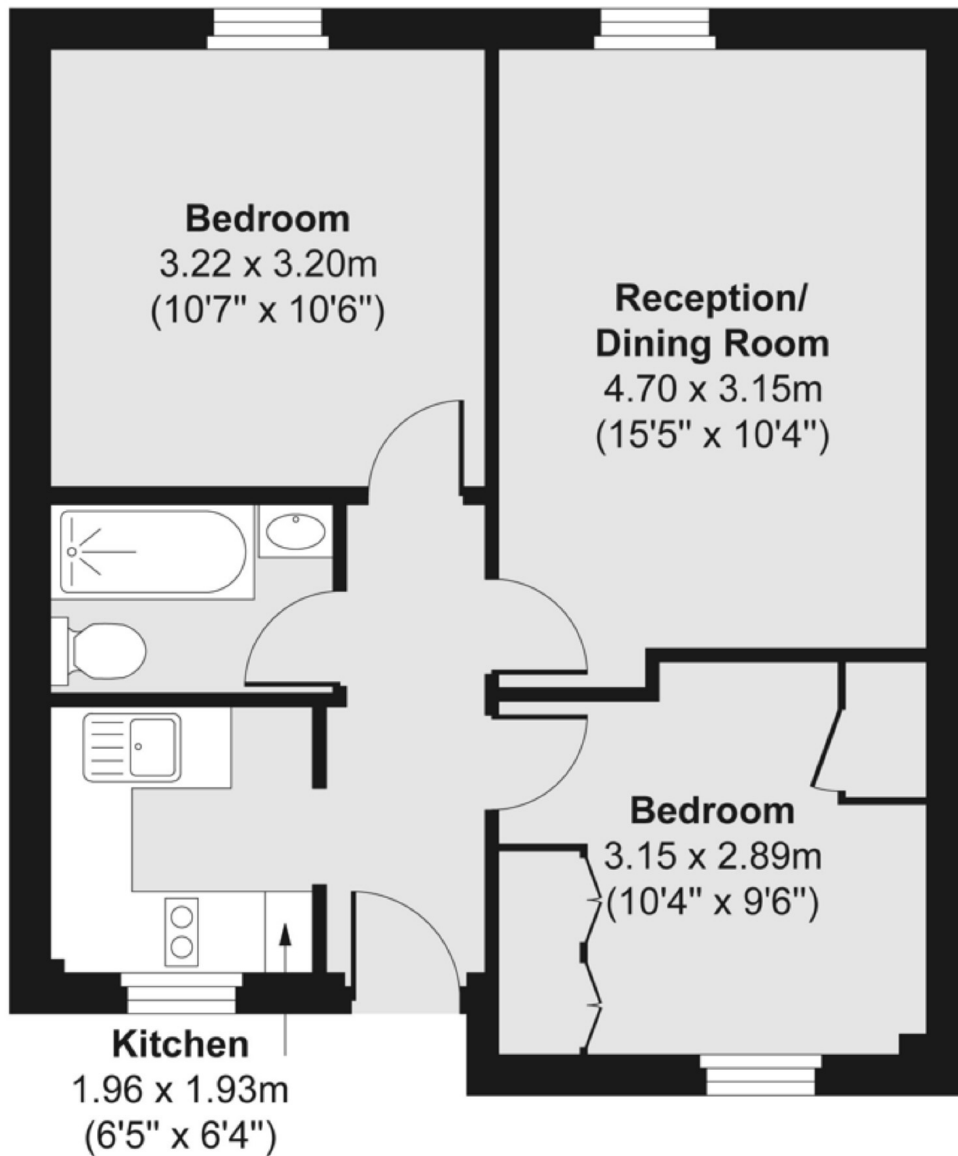
This three-bedroom flat, is located off Fulham Palace Road and is close to all transport and local amenities. The property has three double bedrooms, separate kitchen and no reception room.

Fulham Palace Road has a variety of bus routes leading into Fulham Broadway, the City and Hammersmith. Barons Court station is near by with a selection of bars, restaurants and local amenities are also on your doorstep.

- Three Bedrooms • No Reception Room • Separate Kitchen •
- Good Storage •

Chard

— ESTATE AGENTS —



Chard Fulham
656 Fulham Road,
London, SW6 5RX
020 7384 1400
fulhamlettings@chard.co.uk

Energy Rating: . We aim to make our particulars both accurate and reliable. However they are not guaranteed; nor do they form part of an offer or contract. If you require clarification on any points then please contact us, especially if you're traveling some distance to view. Please note that appliances and heating systems have not been tested and therefore no warranties can be given as to their good working order.