

# Chard

— ESTATE AGENTS —



## Park Street, SW6

£785 pw (£3400 pcm)

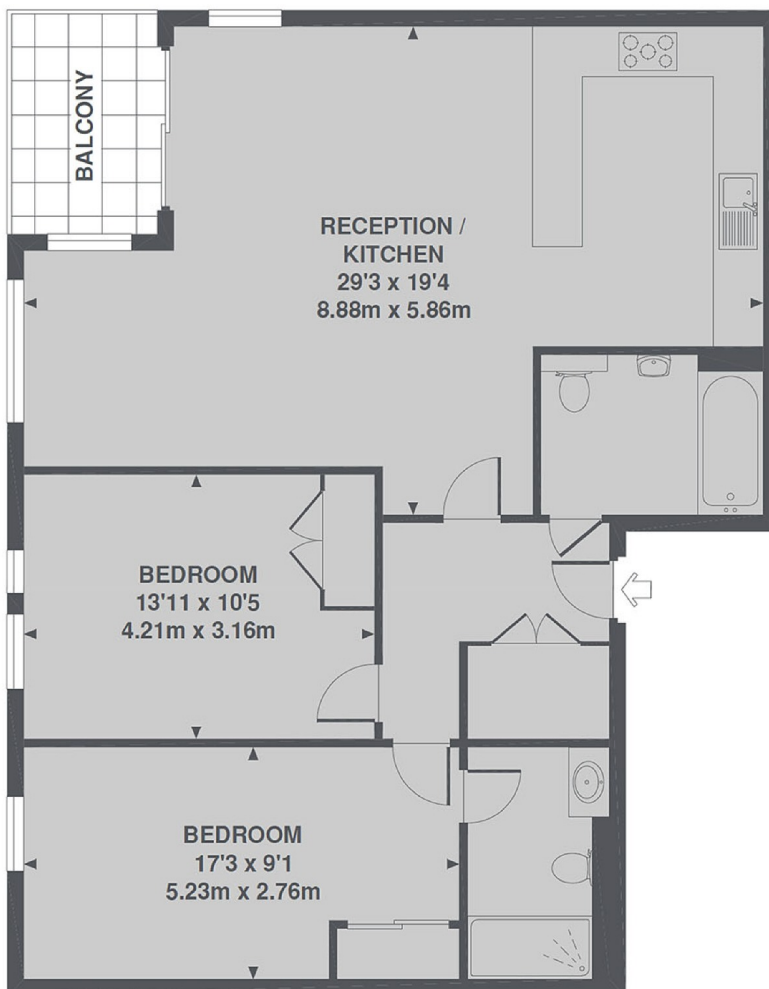
This spacious two bedroom, two bathroom third floor apartment in the sought-after Chelsea Creek development offers the best of modern living with views from the private balcony over the residents canal, 24-hour concierge and access to the private residents spa with indoor swimming pool and gym.

Chelsea Creek is off Imperial Road with good bus routes leading into Chelsea and the city. Fulham Broadway and Imperial Wharf over ground stations are also both nearby. For an alternative mode of transport, the river taxi is a short walk from the development with scenic views.

- Two Bedrooms • Two Bathrooms • Open-Plan •
- Integrated Kitchen • Residents Spa • Concierge •

# Chard

— ESTATE AGENTS —



TOTAL APPROX. FLOOR AREA 928 SQ. FT. (86.2 SQ. M.)

Chard Fulham  
656 Fulham Road,  
London, SW6 5RX  
020 7384 1400  
[fulhamlettings@chard.co.uk](mailto:fulhamlettings@chard.co.uk)

Energy Rating: C. We aim to make our particulars both accurate and reliable. However they are not guaranteed; nor do they form part of an offer or contract. If you require clarification on any points then please contact us, especially if you're traveling some distance to view. Please note that appliances and heating systems have not been tested and therefore no warranties can be given as to their good working order.