

Chard

— ESTATE AGENTS —



Pellant Road, SW6

£650,000

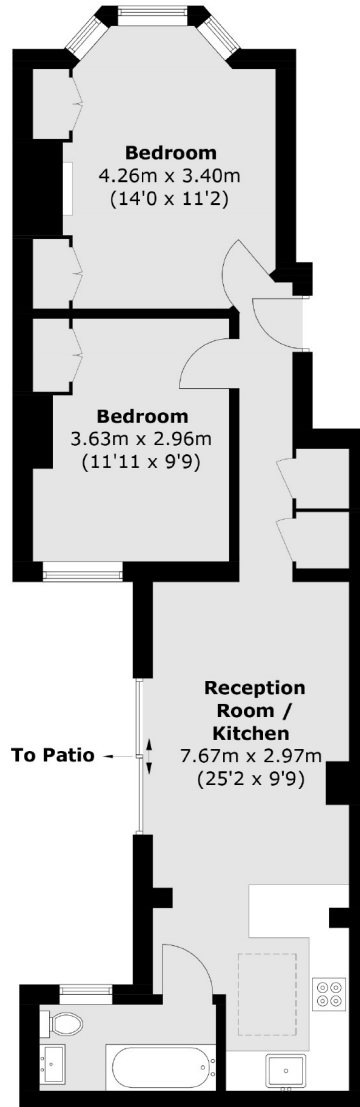
An attractive two double bedroom garden flat which has been refurbished throughout in recent years. This period conversion with high ceilings offers charming character features, whilst benefiting from stylish modern interiors and a generous open plan space which is ideal for modern living. Viewing highly recommended.

Pellant Road is a quiet residential street, ideally located for the shops, restaurants and transport links of Parsons Green, Munster Road and Fulham Broadway. The green space of Normand Park is only a short walk away.

- Share Of Freehold • Two Double Bedrooms • Open Plan •
- Private Patio Garden • Stylish Modern Interiors • Period Features •

Chard

— ESTATE AGENTS —



Ground Floor

Total area (approx.): 56.8 sq. m (611.4 sq. ft)

Chard Fulham
656 Fulham Road,
London, SW6 5RX
020 7731 5115
fulhamsales@chard.co.uk

Energy Rating: C. We aim to make our particulars both accurate and reliable. However they are not guaranteed; nor do they form part of an offer or contract. If you require clarification on any points then please contact us, especially if you're traveling some distance to view. Please note that appliances and heating systems have not been tested and therefore no warranties can be given as to their good working order.