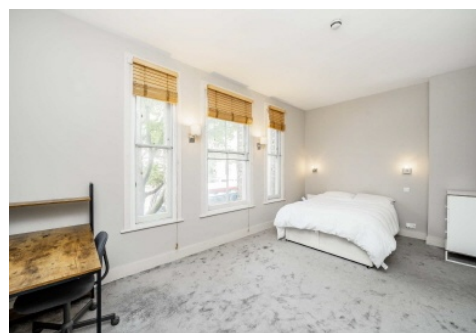


# Chard

— ESTATE AGENTS —



## Fulham High Street, SW6

£623 pw (2700 pcm)

A well presented two bedroom flat set over two floors, offering two large bedrooms and a patio garden in the heart of Fulham

Ideally located in the heart of Fulham offering access to transport links at Putney Bridge and access to green spaces at Bishops Park

- Two Bedrooms • Two Bathrooms • Patio •
- Storage • Split Level • Prime Location •

# Chard

— ESTATE AGENTS —

Chard Fulham  
656 Fulham Road,  
London, SW6 5RX  
020 7384 1400  
[fulhamlettings@chard.co.uk](mailto:fulhamlettings@chard.co.uk)

Energy Rating: . We aim to make our particulars both accurate and reliable. However they are not guaranteed; nor do they form part of an offer or contract. If you require clarification on any points then please contact us, especially if you're traveling some distance to view. Please note that appliances and heating systems have not been tested and therefore no warranties can be given as to their good working order.