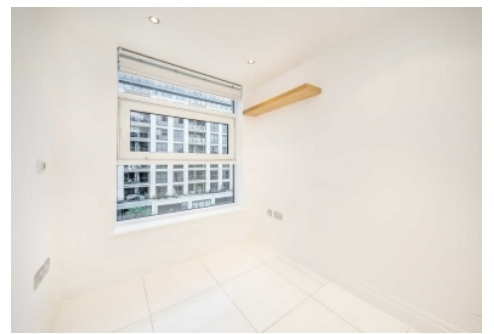


Chard

— ESTATE AGENTS —



The Boulevard, SW6

£830 pw (£3,597 pcm)

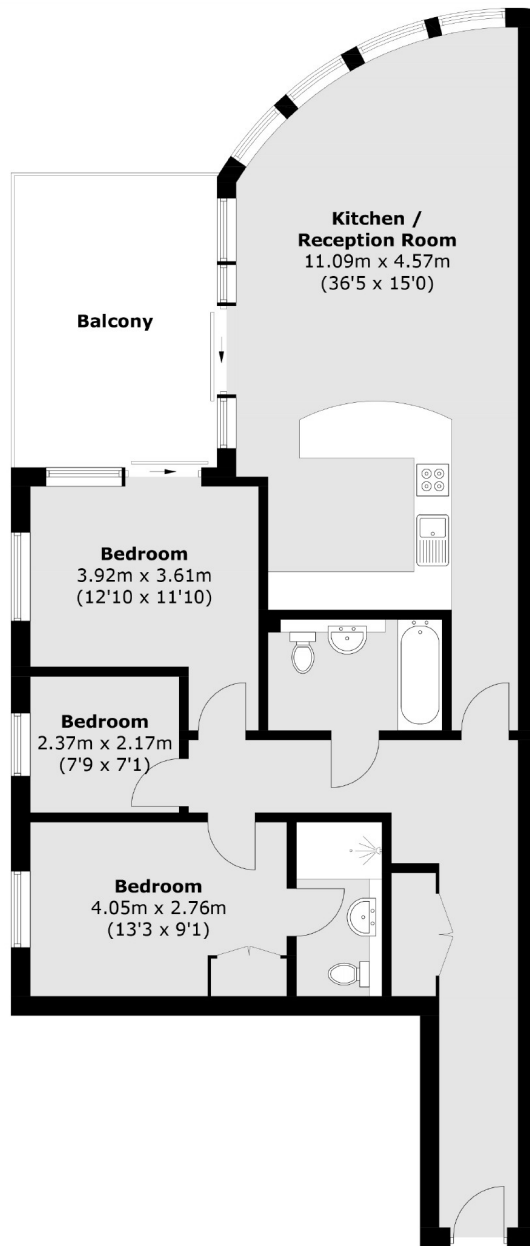
This three bedroom, second floor apartment in Imperial Wharf riverside development offers a spacious open plan living room with a modern integrated kitchen, two bathrooms, built in storage, a private balcony, residents gym and 24-hour concierge.

Imperial Wharf Overground station is moments away along with many bus routes. For a scenic mode of transport, the river taxi is on your doorstep with routes into the city and Wandsworth. Fulham Broadway and Battersea are all close by providing excellent amenities

- Three Bedrooms • Open-Plan • 24-Hour Concierge •
- Two Bathrooms • Private Balcony • Residents Gym •

Chard

— ESTATE AGENTS —



Total area (approx.): 96.2 sq. m (1035.5 sq. ft)
Balcony area : 14.7 sq. m (158.2 sq. ft)

Chard Fulham
656 Fulham Road,
London, SW6 5RX
020 7384 1400
fulhamlettings@chard.co.uk

Energy Rating: . We aim to make our particulars both accurate and reliable. However they are not guaranteed; nor do they form part of an offer or contract. If you require clarification on any points then please contact us, especially if you're traveling some distance to view. Please note that appliances and heating systems have not been tested and therefore no warranties can be given as to their good working order.