

Chard

— ESTATE AGENTS —



West Hill, SW15

£425,000

A spacious two double bedroom flat with parking and direct access to outdoor space. Featuring a generous open plan kitchen living area with sliding doors out to a patio area and communal outdoor space. There is also two double bedrooms and two bathrooms, including one en-suite shower room.

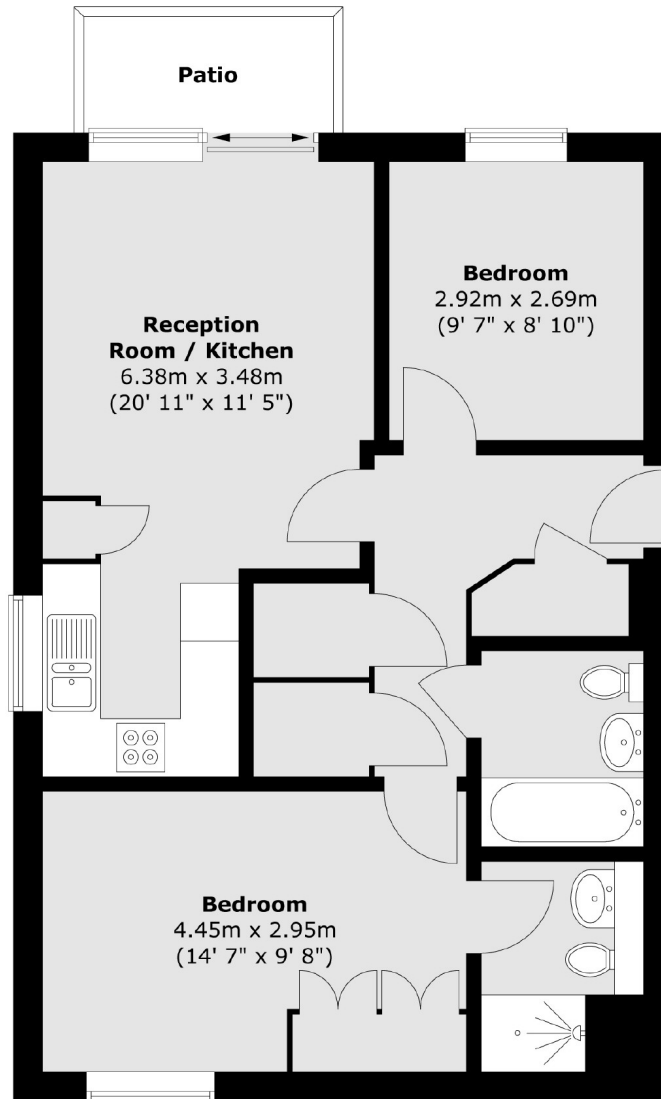
The flat is set back from West Hill and is within easy reach of Wandsworth, Putney and Southfields town centres, either by walking or by the bus. Here you will find plenty of shops, cafes, bars, restaurants. East Putney Tube and Putney train station are within 0.9 Miles.

- No Onward Chain • Two Double Bedrooms • Parking •
- Outdoor Space • Open Plan Kitchen Living Area • Two Bathrooms (One En-suite) •

Chard

— ESTATE AGENTS —

Ground Floor



Total area (approx.) : 60.6 sq. m (652 sq. ft)
Total patio area (approx.) : 3.2 sq. m (34 sq. ft)

Chard Fulham
656 Fulham Road,
London, SW6 5RX
020 7731 5115
fulhamsales@chard.co.uk

Energy Rating: C. We aim to make our particulars both accurate and reliable. However they are not guaranteed; nor do they form part of an offer or contract. If you require clarification on any points then please contact us, especially if you're traveling some distance to view. Please note that appliances and heating systems have not been tested and therefore no warranties can be given as to their good working order.