

Chard

— ESTATE AGENTS —



Bishops Park Road, SW6

£738 pw (£3200 pcm)

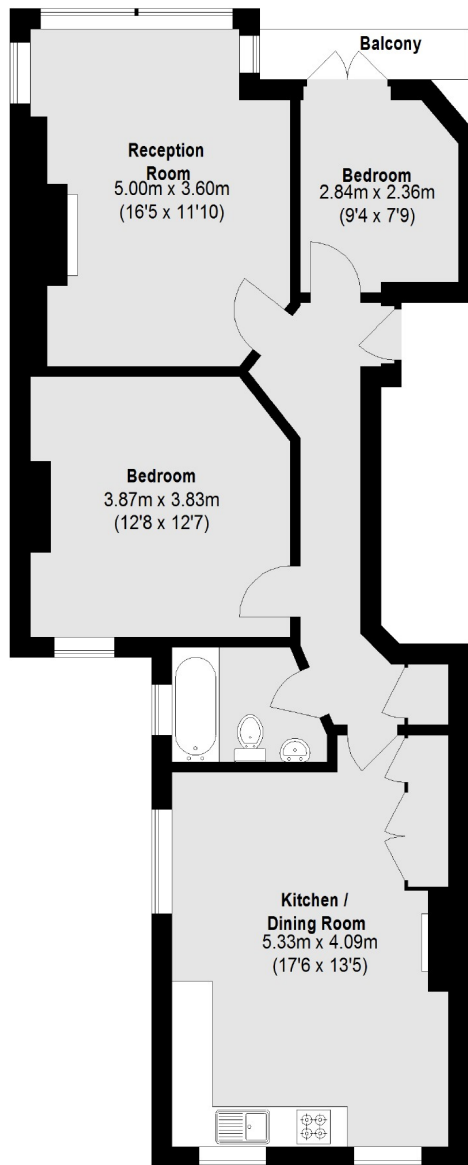
This two bedroom flat to let is arranged on the first floor of this prestigious well known mansion block just off the Fulham Palace Road in Fulham. The flat overlooks the tennis courts in Bishops Park and the building has access to communal gardens.

Bishops Park Road is a tree lined street near the river Thames and Bishops Park. The closest underground station is Putney Bridge. The nearest super store is Tesco's on the Fulham Palace Road.

- Two Bedrooms • Mansion Block • First Floor Flat •
- Eat In Kitchen • Communal Gardens • Putney Bridge Underground •

Chard

— ESTATE AGENTS —



Total area (approx.): 77.29 sq. m (832 Sq. ft)
Balcony: 2.32 sq. m (25 Sq. ft)

Chard Fulham
656 Fulham Road,
London, SW6 5RX
020 7384 1400
fulhamlettings@chard.co.uk

Energy Rating: D. We aim to make our particulars both accurate and reliable. However they are not guaranteed; nor do they form part of an offer or contract. If you require clarification on any points then please contact us, especially if you're traveling some distance to view. Please note that appliances and heating systems have not been tested and therefore no warranties can be given as to their good working order.