

Chard

Lettings



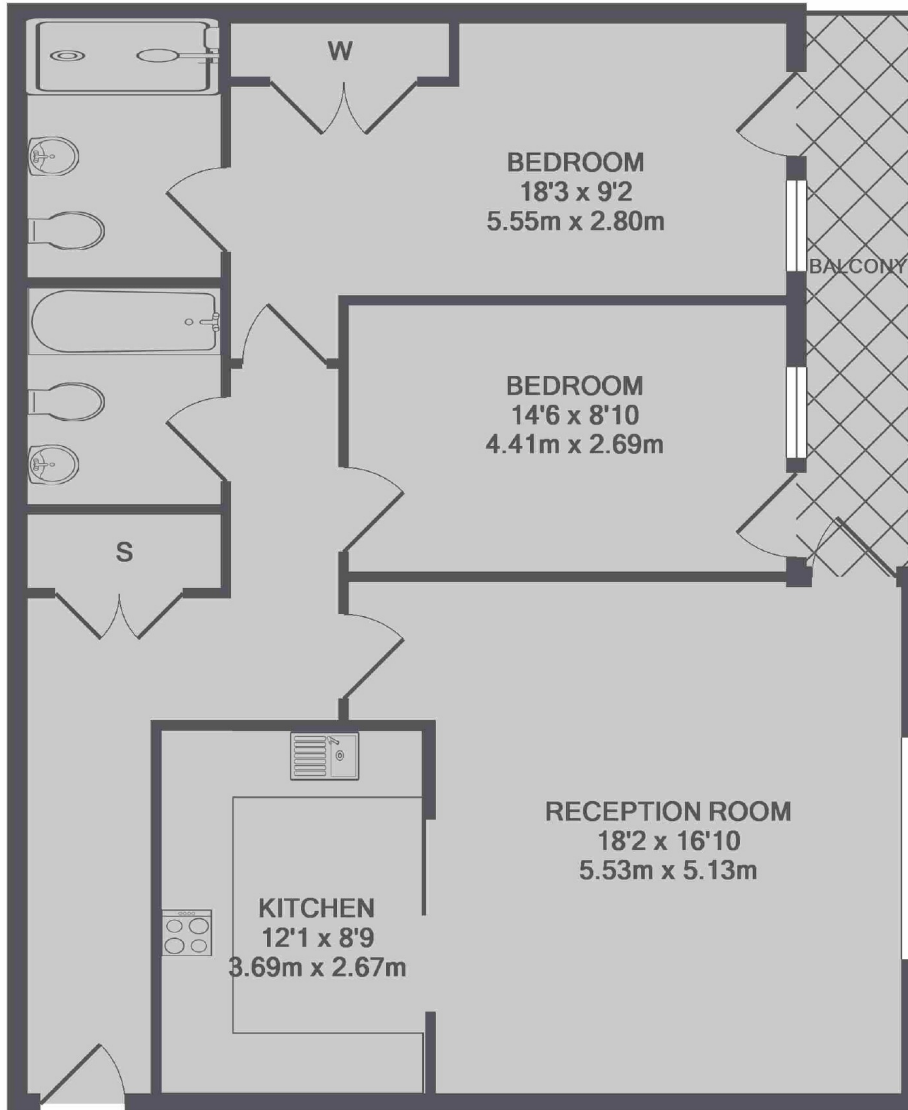
Lensbury Avenue, SW6

£531 pw (£2,300 pcm)

This two bedroom, two bathroom apartment in Imperial Wharf riverside development offers a spacious semi open plan living area with a modern integrated kitchen and a private balcony. Residents also benefit from a 24-hour concierge, onsite gym and local amenities.

Imperial Wharf overground station is moments away in addition to a range of good bus services. For a scenic mode of transport, the river taxi offers regular services into the city. Sands End is located in Fulham which allows easy access to Chelsea and Battersea.

- Two Bedrooms • Semi Open-Plan • Integrated Kitchen •



TOTAL APPROX. FLOOR AREA 928 SQ.FT. (86.2 SQ.M.)

Chard Fulham
5 Harwood Road,
London, SW6 4QP
020 7384 1400
fulhamlettings@chard.co.uk

Energy Rating: B. We aim to make our particulars both accurate and reliable. However they are not guaranteed; nor do they form part of an offer or contract. If you require clarification on any points then please contact us, especially if you're traveling some distance to view. Please note that appliances and heating systems have not been tested and therefore no warranties can be given as to their good working order.