

# Chard

— ESTATE AGENTS —



## Park Street, SW6

£790,000

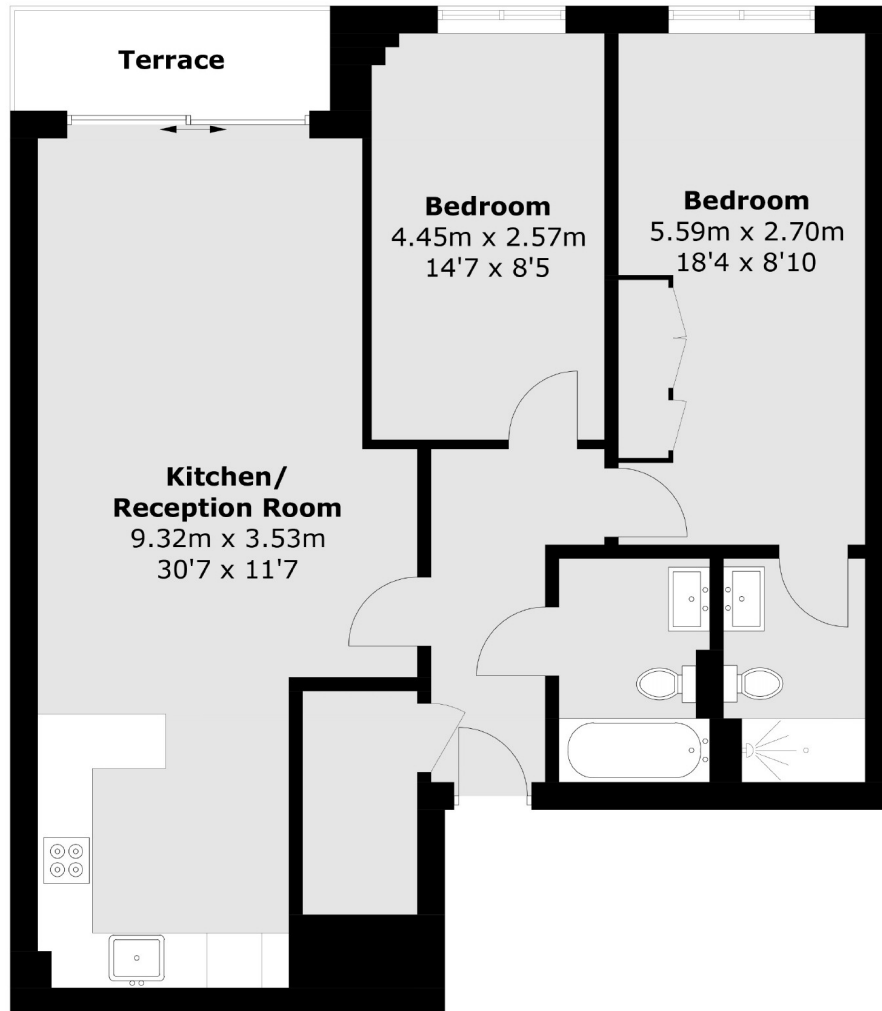
This spacious two bedroom, two bathroom first floor apartment in the sought-after Chelsea Creek development offers a private balcony, underground parking and access to the residents health spa & fitness suite.

Chelsea Creek is off Imperial Road with bus routes leading into Chelsea and the city. Fulham Broadway station (District line) is close by with Imperial Wharf overground station around the corner. The river taxi is a short walk from the property for a scenic mode of transport.

- Two Double Bedrooms • 24/7 Concierge • Underground Parking •
- Private Balcony • Communal Garden • Residential Spa/Gym •

# Chard

— ESTATE AGENTS —



Total area (approx.): 78.7 sq. m (847.1 sq. ft)  
Terrace area: 3.8 sq. m (40.9 sq. ft)

Chard Fulham  
656 Fulham Road,  
London, SW6 5RX  
020 7731 5115  
[fulhamsales@chard.co.uk](mailto:fulhamsales@chard.co.uk)

Energy Rating: B. We aim to make our particulars both accurate and reliable. However they are not guaranteed; nor do they form part of an offer or contract. If you require clarification on any points then please contact us, especially if you're traveling some distance to view. Please note that appliances and heating systems have not been tested and therefore no warranties can be given as to their good working order.