

Chard

— ESTATE AGENTS —



Edith Road, W14

£650,000

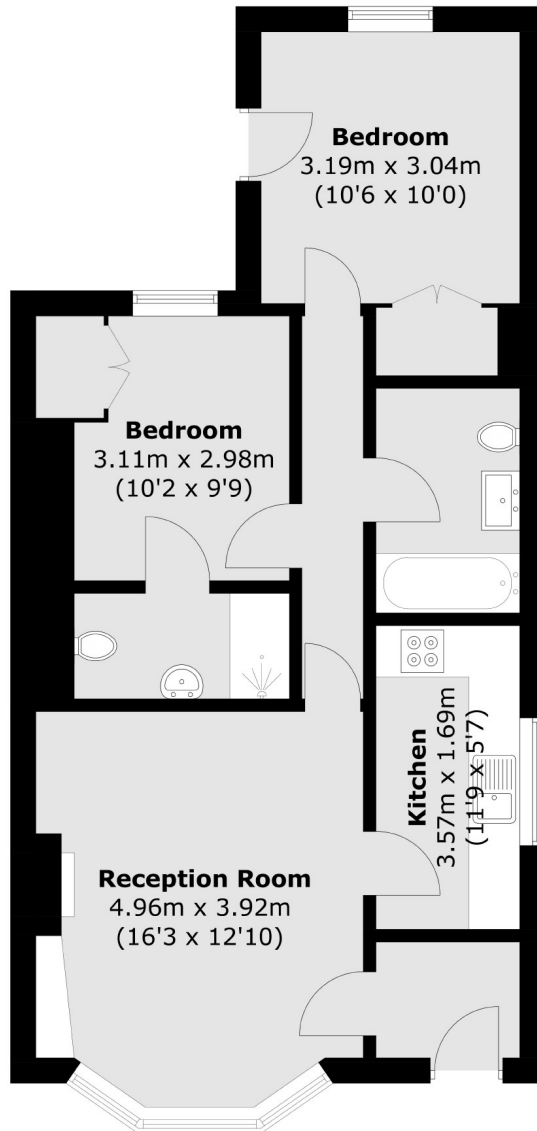
This is a wonderful opportunity to purchase a spacious two bedroom garden flat in the heart of West Kensington. This property would make an excellent home or investment.

Edith Road is a residential street situated moments from West Kensington, Barons Court and Hammersmith. There are an array of shops, bars and restaurants close by.

- Two Bedrooms • One Bathroom • Garden •
- Separate Kitchen • Share Of Freehold • West Kensington •

Chard

— ESTATE AGENTS —



Total area (approx.): 61.2 sq. m (658.7 sq. ft)

Chard Fulham
656 Fulham Road,
London, SW6 5RX
020 7731 5115
fulhamsales@chard.co.uk

Energy Rating: D. We aim to make our particulars both accurate and reliable. However they are not guaranteed; nor do they form part of an offer or contract. If you require clarification on any points then please contact us, especially if you're traveling some distance to view. Please note that appliances and heating systems have not been tested and therefore no warranties can be given as to their good working order.