

Chard

Lettings



Hestercombe Avenue, SW6

£670 pw (£2903 pcm)

This spacious two bedroom split-level annexed flat on Hestercombe Avenue is in the heart of Parsons Green with a open-plan living area with space for dining, an integrated modern kitchen, a tiled family bathroom with bath and shower, good storage and a separate W/C.

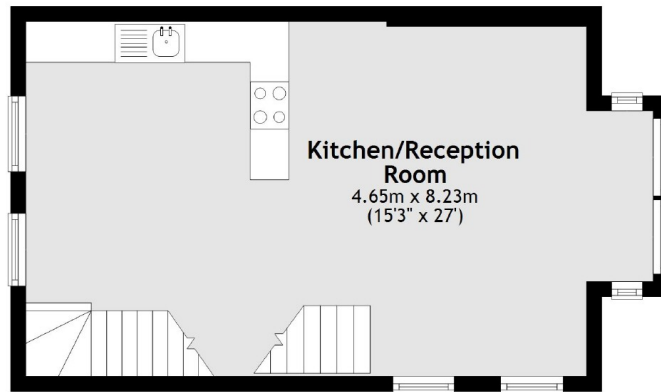
Hestercombe Avenue is located off the Fulham Road which offers a wide range of shops, restaurants and cafés all on the doorstep. Parsons Green is the closest underground station in addition to excellent bus routes leading into the city, Hammersmith and Putney.

- Two Bedrooms • Open-Plan • Integrated Kitchen •
- Wooden Flooring • Good Storage • Modern Bathroom •
- Annexed Property •

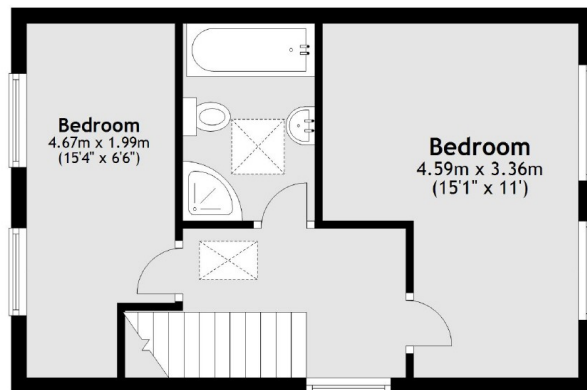
Chard

Lettings

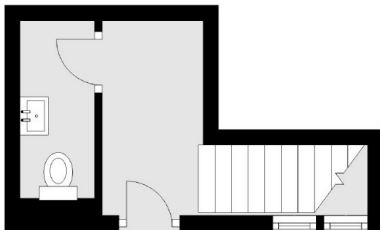
First Floor



Second Floor



Ground Floor



Total area: approx. 77.9 sq. metres (838.9 sq. feet)

Chard Fulham
5 Harwood Road,
London, SW6 4QP
020 7384 1400
fulhamlettings@chard.co.uk

Energy Rating: C. We aim to make our particulars both accurate and reliable. However they are not guaranteed; nor do they form part of an offer or contract. If you require clarification on any points then please contact us, especially if you're traveling some distance to view. Please note that appliances and heating systems have not been tested and therefore no warranties can be given as to their good working order.