

# Chard

— ESTATE AGENTS —



## Palliser Road, W14

£630,000

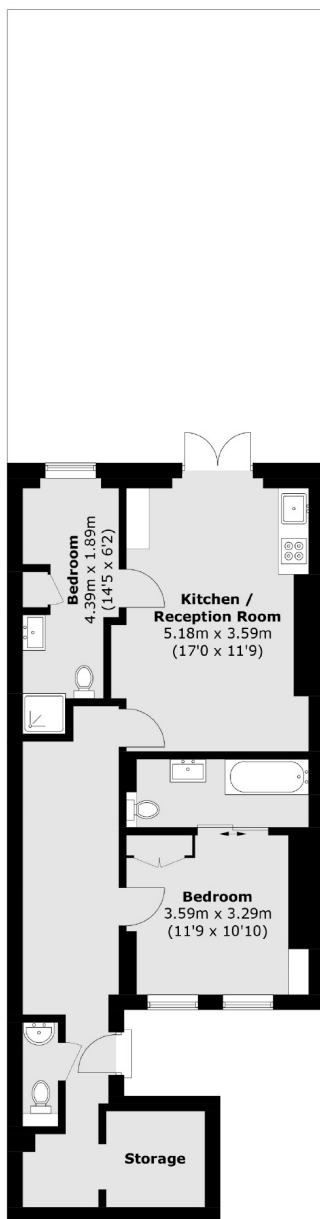
Conveniently located on a beautiful, well connected street in Barons Court, is this spacious two double bedroom garden flat. Offering a open plan kitchen living area which has access to a large west facing rear garden, providing an inviting place for al fresco dining. The property also benefits from two bathrooms (one en-suite), an additional W/C and plenty of storage. There is an opportunity to extend further (STPP) into the vault area under the external stairs.

Located within a short walk of Barons Court underground station this property boasts excellent transport links as well as an array of local bars, shops and restaurants, directly next the prestigious Queens Club Gardens Tennis Club.

- Long Lease • Commutable Location • Open Plan Kitchen Living Area •
- Generous West Facing Rear Garden • Two Bathrooms (One En-suite) • Separate W/C •

# Chard

— ESTATE AGENTS —



Total area (approx.): 67.5 sq. m (726.8 sq. ft)

Chard Fulham  
656 Fulham Road,  
London, SW6 5RX  
020 7731 5115  
fulhamsales@chard.co.uk

Energy Rating: F. We aim to make our particulars both accurate and reliable. However they are not guaranteed; nor do they form part of an offer or contract. If you require clarification on any points then please contact us, especially if you're traveling some distance to view. Please note that appliances and heating systems have not been tested and therefore no warranties can be given as to their good working order.