

Chard

— ESTATE AGENTS —



William Morris Way, SW6

£875,000

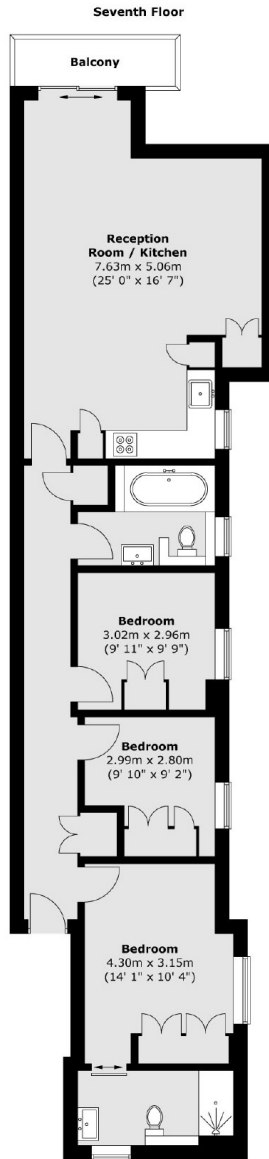
Forming part of the well established Regent on the River development, is this spacious three bedroom, two bathroom apartment with a balcony offering south facing views down the River Thames. Benefitting from secure ANPR accessed underground parking, 24hr concierge, lift access throughout and beautiful communal gardens over-looking the river. This stylish riverside property is offered to market with no onward chain.

Situated next to the exclusive Chelsea Harbour Health Club and just a short walk to shops and restaurants on Wandsworth Bridge Road. Both Imperial Wharf and the Thames Clipper are also less than half a mile away.

- Direct River Views • South Facing Balcony • Three Bedrooms •
- Two Bathrooms • Allocated Parking • Communal Gardens •

Chard

— ESTATE AGENTS —



Total area (approx.) : 90.6 sq. m (975 sq. ft)
Total balcony area (approx.) : 3.4 sq. m (36 sq. ft)

Chard Fulham
656 Fulham Road,
London, SW6 5RX
020 7731 5115
fulhamsales@chard.co.uk

Energy Rating: C. We aim to make our particulars both accurate and reliable. However they are not guaranteed; nor do they form part of an offer or contract. If you require clarification on any points then please contact us, especially if you're traveling some distance to view. Please note that appliances and heating systems have not been tested and therefore no warranties can be given as to their good working order.