

Chard

— ESTATE AGENTS —



Brompton Park Crescent, SW6

£400,000

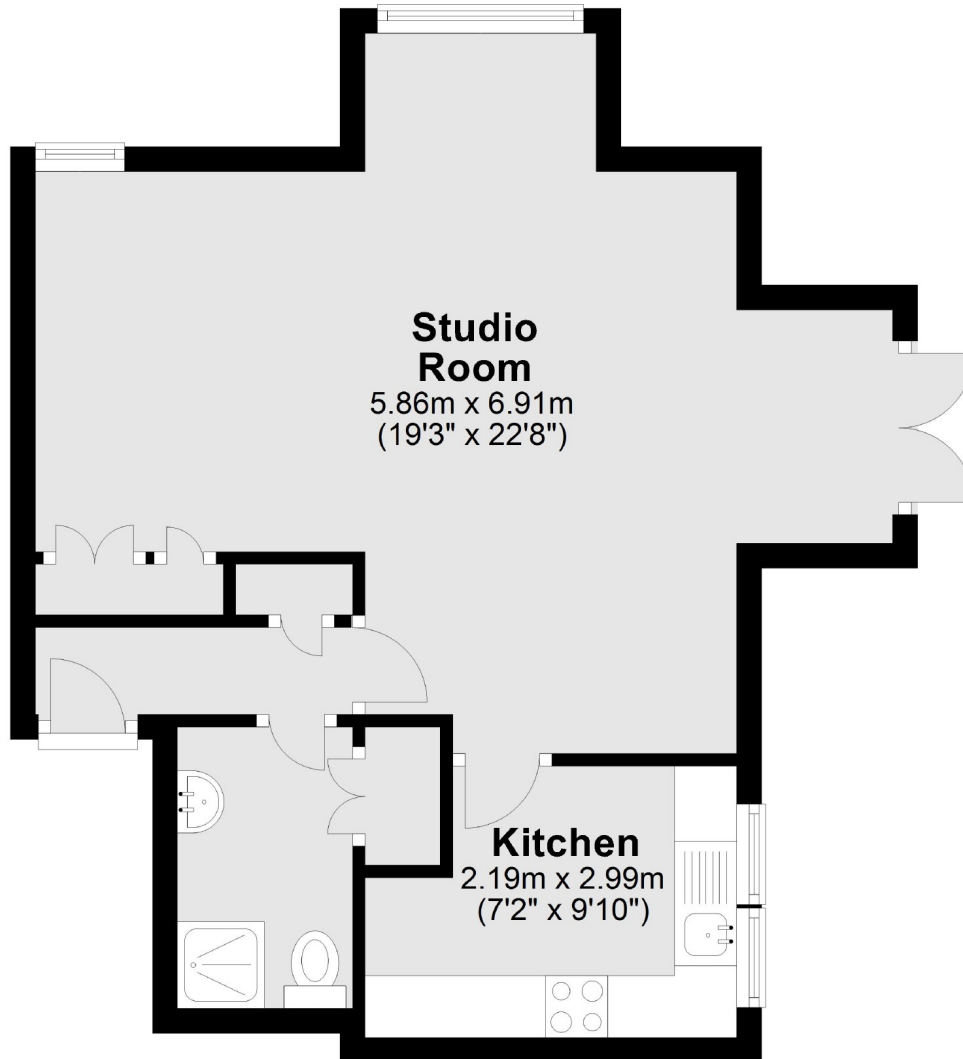
A fantastic opportunity to acquire this beautifully presented, large studio flat with its own allocated parking space. With a separate kitchen, generous living space with french doors leading out onto your own private patio, this would make a wonderful first home. There is also an opportunity to transform this into a comfortable one bedroom apartment.

Brompton Park Crescent is a gated development off Seagrave Road. Perfectly positioned within easy reach of all the amenities at Fulham Broadway, with Earls Court and Kensington on your doorstep.

- Gated Development • Private Patio Garden • Easily Converted Into A One Bed •
- Swimming Pool/Gym On Site • Allocated Parking • Gated Communal Park •

Chard

— ESTATE AGENTS —



Total area: approx. 40.6 sq. metres (436.7 sq. feet)

Chard Fulham
656 Fulham Road,
London, SW6 5RX
020 7731 5115
fulhamsales@chard.co.uk

Energy Rating: C. We aim to make our particulars both accurate and reliable. However they are not guaranteed; nor do they form part of an offer or contract. If you require clarification on any points then please contact us, especially if you're traveling some distance to view. Please note that appliances and heating systems have not been tested and therefore no warranties can be given as to their good working order.