

Chard

— ESTATE AGENTS —



Edith Grove, SW10

£1,000,000

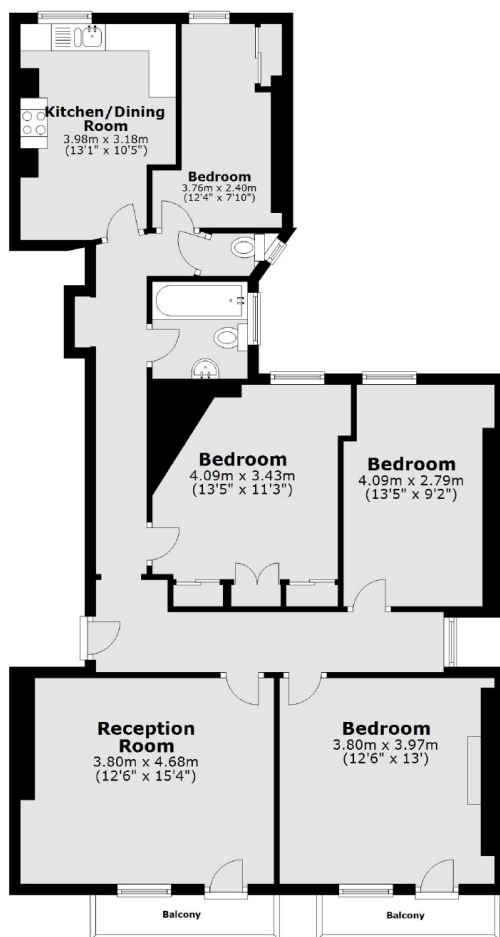
This spacious four bedroom apartment in an attractive mansion block, provides generous lateral space and impressive views from the fourth floor. The property offers an exciting opportunity for any buyer wanting to put their own stamp on their first home and comes to the market with no onward chain.

Edith Grove nestles itself nicely between the Fulham Road and the King's Road, both of which offer desirable shopping and restaurant amenities. The river is only a short walk away with easy access to the vibrant new development at Battersea Power Station.

- Share of Freehold • High Ceilings • Four Bedrooms •
- Lift To Fourth Floor • Separate Kitchen • Communal Garden •

Chard

— ESTATE AGENTS —



Total area: approx. 97.1 sq. metres (1045.5 sq. feet)

Chard Fulham
656 Fulham Road,
London, SW6 5RX
020 7731 5115
fulhamsales@chard.co.uk

Energy Rating: C. We aim to make our particulars both accurate and reliable. However they are not guaranteed; nor do they form part of an offer or contract. If you require clarification on any points then please contact us, especially if you're traveling some distance to view. Please note that appliances and heating systems have not been tested and therefore no warranties can be given as to their good working order.