

Chard

— ESTATE AGENTS —



Farm Lane, SW6

£285,000

Situated within a small gated development off Farm Lane, is this well proportioned studio flat with built in wardrobes, a pull-down double bed, separate galley kitchen and a three piece bathroom suite. This would be an ideal purchase for a first time buyer or investor.

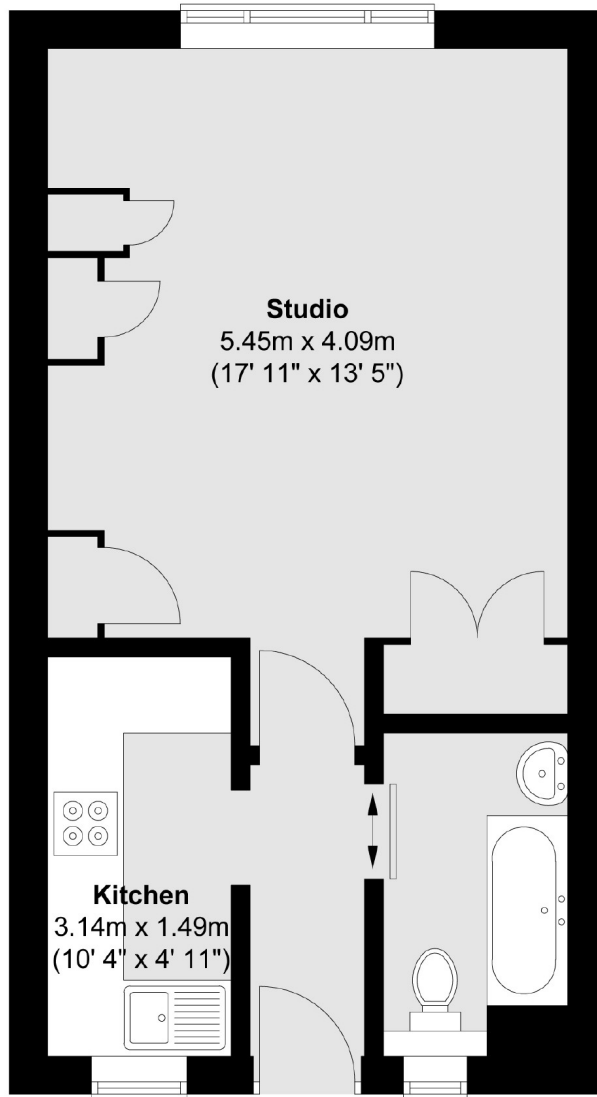
Located within close proximity to Fulham Broadway tube station this property is conveniently positioned to an array of shops, bars, restaurants and other amenities. The Kings Road is just a short walk away.

- No Onward Chain • Gated Development • Light & Airy Studio Apartment •
- Three Piece Bathroom Suite • Underfloor Heating • Excellent Location •

Chard

— ESTATE AGENTS —

First Floor



Total area (approx.) : 32.8 sq. m (353 sq. ft)

Chard Fulham
656 Fulham Road,
London, SW6 5RX
020 7731 5115
fulhamsales@chard.co.uk

Energy Rating: D. We aim to make our particulars both accurate and reliable. However they are not guaranteed; nor do they form part of an offer or contract. If you require clarification on any points then please contact us, especially if you're traveling some distance to view. Please note that appliances and heating systems have not been tested and therefore no warranties can be given as to their good working order.