

Chard

— ESTATE AGENTS —



Fitzgeorge Avenue, W14

£799,950

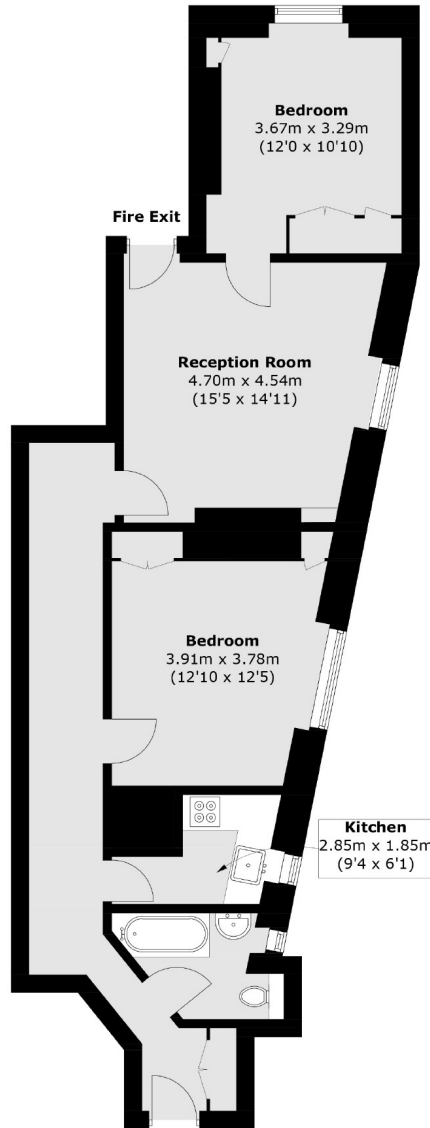
Situated on a desirable tree lined street, within a gated mansion block. This spacious two double bedroom apartment offering generous views and an abundance of character, with high ceilings throughout and has been modernised to provide contemporary living.

Conveniently positioned within walking distance to Brook Green as well as the shops and restaurants of High Street Kensington. The green space at Holland Park is nearby.

- No Onward Chain • Share Of Freehold • On Site Porters •
- Two Double Bedrooms • Spacious Reception Room • Modern Interiors •

Chard

— ESTATE AGENTS —



Total area (approx.): 74.6 sq. m (803.0 sq. ft)

Chard Fulham
656 Fulham Road,
London, SW6 5RX
020 7731 5115
fulhamsales@chard.co.uk

Energy Rating: E. We aim to make our particulars both accurate and reliable. However they are not guaranteed; nor do they form part of an offer or contract. If you require clarification on any points then please contact us, especially if you're traveling some distance to view. Please note that appliances and heating systems have not been tested and therefore no warranties can be given as to their good working order.