



sweet Coppin, Exeter, EX5

Guide Price £325,000



Key Features

- Modern finish throughout
- Garage
- Trifold doors
- Sizeable rear garden
- En-suite
- Sought after location



GUIDE PRICE £325,000 - £340,000. A superbly presented three-bedroom semi-detached house, offering landscaped rear gardens and well-proportioned accommodation throughout, all nestled in a quiet position in the ever-popular Sweet Coppin.





Entering the property, you are warmly welcomed by a spacious entrance hall with stairs rising to the first floor and doors leading to the living room and kitchen-diner.

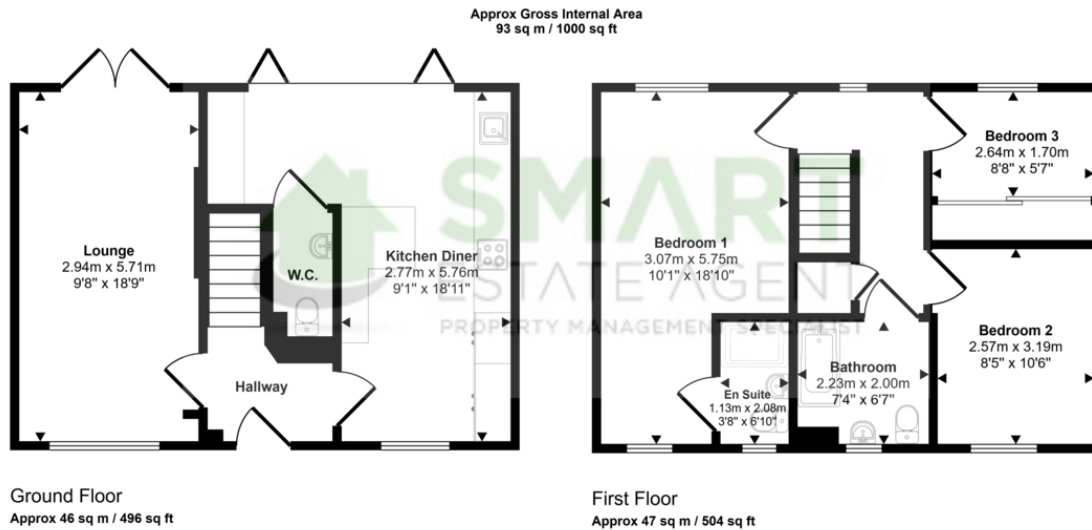
To the right of the hallway is the beautifully presented kitchen-diner, which has been tastefully upgraded to an impeccable standard by the current owners. The kitchen is well-equipped with a range of base and eye-level units, along with multiple integrated appliances, including a fridge-freezer, double electric oven, dishwasher, and a four-ring electric hob. There is ample room for a dining table alongside a breakfast bar, making this kitchen the perfect space for hosting guests and socializing with family. There is also a convenient utility space that includes room and plumbing for a washing machine and a dryer. The kitchen is particularly light and airy, thanks to the large tri-fold doors that open onto the garden.

The living room is situated on the left-hand side of the property and offers ample room for sizable furniture, with French doors that lead to the garden. The room also features a focal media wall with an electric LED fireplace.

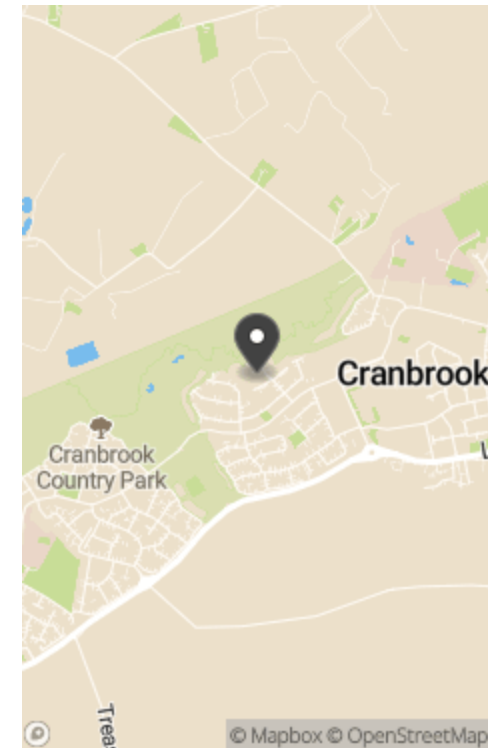
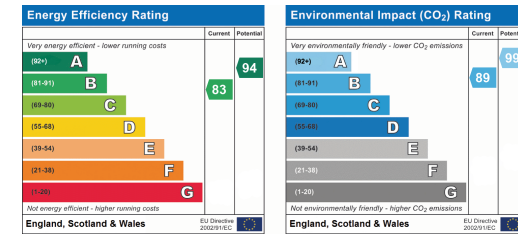
The first floor benefits from three bedrooms, two of which are comfortable doubles, with the master bedroom offering plenty of space for bedroom furniture, in addition to a modern white three-piece en-suite. The third bedroom is a comfortable single. The family bathroom is easily accessible from all three bedrooms and comprises a bathtub, WC, and washbasin.

The fully enclosed rear garden has been carefully landscaped to include a modern patio area, in addition to an area of artificial





This floorplan is only for illustrative purposes and is not to scale. Measurements of rooms, doors, windows, and any items are approximate and no responsibility is taken for any error, omission or mis-statement. Icons of items such as bathroom suites are representations only and may not look like the real items. Made with Made Snappy 360.



Tenure Type: Freehold
Council Tax Band: D
Council Authority: Exeter City Council