



Topsham Road, Exeter, EX2
Offers In Excess Of £350,000



Key Features

- Three double bedrooms
- Sought after area
- Landscaped rear gardens
- Outside power
- Rear access
- Recently renovated
- Motivated seller



SECURE YOUR VIEWING SLOT TODAY! Welcome to 426 to this well maintained three bedroom end of terrace house offering spacious accommodation throughout, three double bedrooms and landscaped rear gardens all nestled within the desirable Topsham Road.





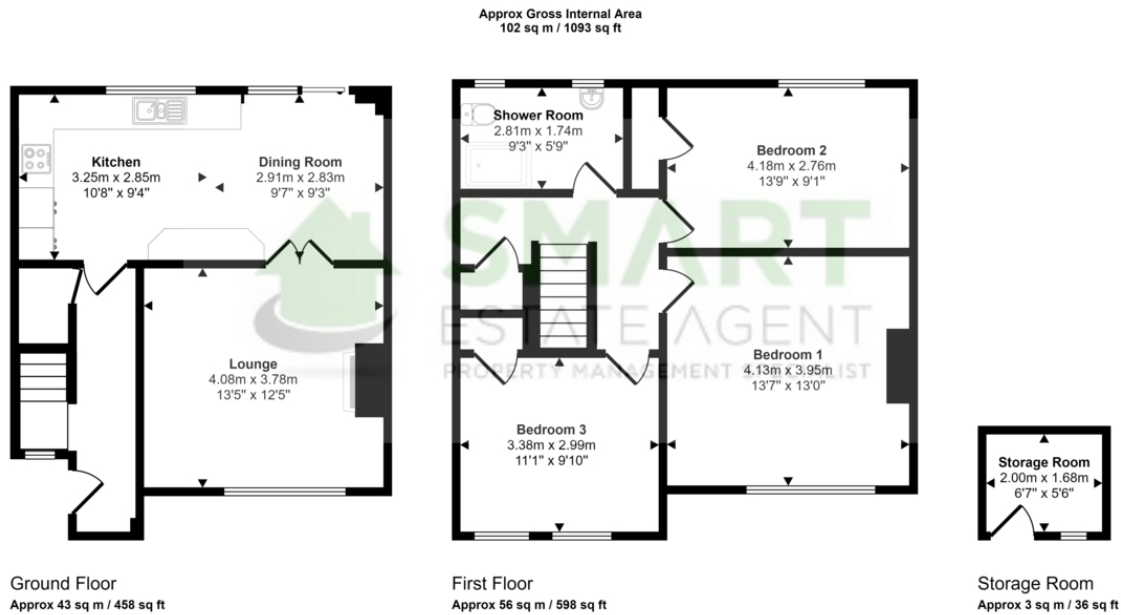
Entering the home you are welcomed by a spacious entrance hall followed by stairs ascending to the first floor. To the end of the entrance hall you will find the spacious kitchen diner with views over the picturesque rear garden. The kitchen itself offers an abundance of work top surface along with an array of base and eye level units. The kitchen also features an integrated gas hob and electric oven, fridge freezer, dishwasher, washing machine and dryer.

The Living area is also found on the ground floor just off of kitchen diner via wooden French doors. The room offers plenty of space for sizeable furniture and also includes a log burner which has been recently installed by the current owners creating a focal point for the room.

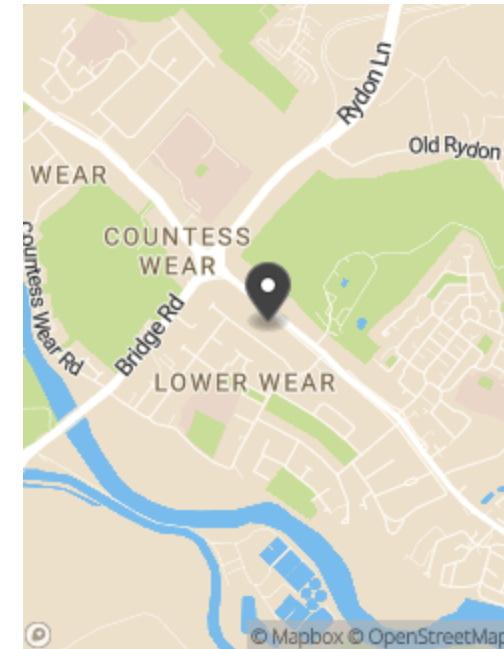
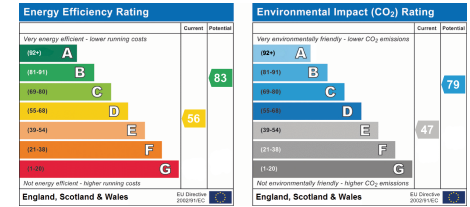
The first floor's accommodation comprises three double bedrooms with the master room being especially sizeable allowing plenty of room for bedroom furniture. The family bathroom is within easy access to all three bedrooms and has been recently modernised to include a double shower, WC, wash hand basin along with a heated towel rail.

The garden has been carefully landscaped to included a block paved area which is accessed via French doors from the kitchen perfect for al fresco dining in the summer months. The rest of the garden is mostly laid to lawn in addition to an area of artificial grass. You will also find a useful outside loo and a storage shed with power. The front of the property also features well maintained





This floorplan is only for illustrative purposes and is not to scale. Measurements of rooms, doors, windows, and any items are approximate and no responsibility is taken for any error, omission or mis-statement. Icons of items such as bathroom suites are representations only and may not look like the real items. Made with Made Snappy 360.



Tenure Type: Freehold
Council Tax Band: C
Council Authority: Exeter City