



Bishop Westall Road, Exeter, EX2

**Offers Over £300,000**

Smart Estate Agent - Exeter

[www.smartestateagent.co.uk](http://www.smartestateagent.co.uk) | 01392 905 906



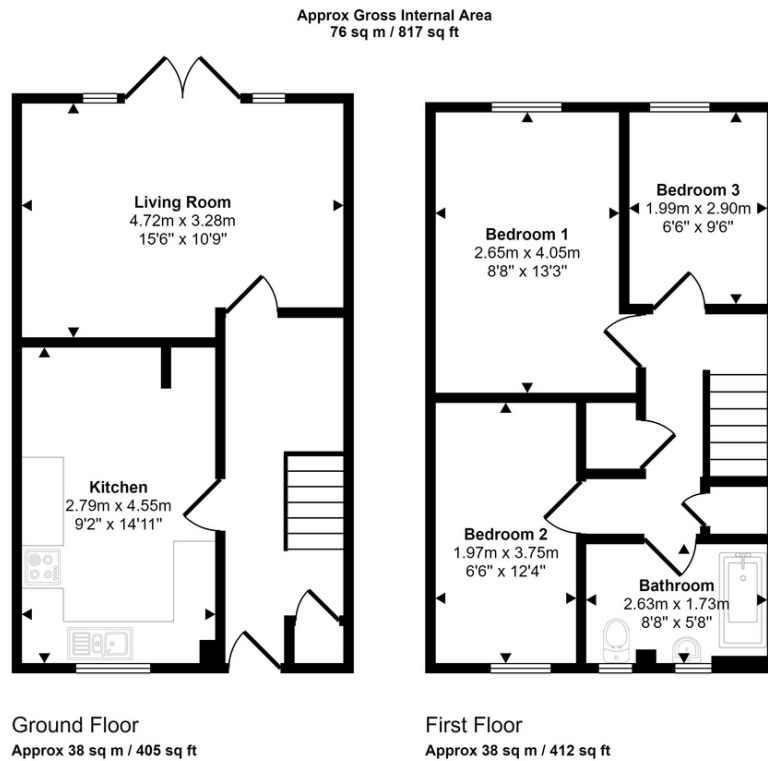


Beautifully presented and recently updated 3 bedroom family home with landscaped garden, off road parking and a garage like storage shed. This property is located in a popular area with easy access to City centre, RD&E and the M5 and A30.

- **NO CHAIN**
- **Beautifully Presented Throughout**
- **Recently Updated**
- **Kitchen/Diner**
- **2 Double Bedrooms**
- **New Boiler**
- **Landscaped Garden**
- **2 Allocated Parking Spaces**
- **Extremely large Storage Shed**







This floorplan is only for illustrative purposes and is not to scale. Measurements of rooms, doors, windows, and any items are approximate and no responsibility is taken for any error, omission or mis-statement. Icons of items such as bathroom suites are representations only and may not look like the real items. Made with Made Snappy 360.

