



Hawton Crescent, Nottingham
£560 pcm



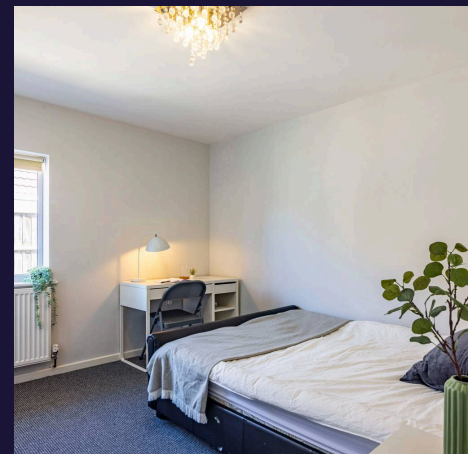
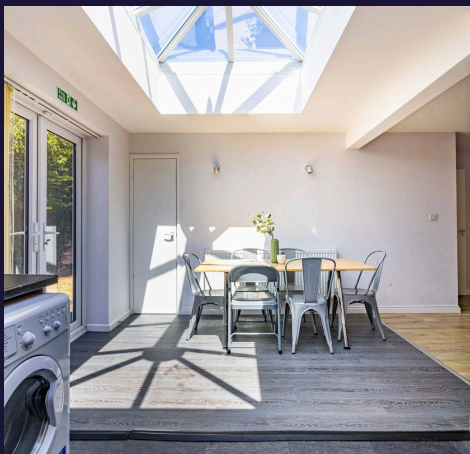
Hawton Crescent

Nottingham

This well-presented 6 bedroom property is the perfect choice if you are a working professional seeking both comfort and convenience. Located just a short walk from the University of Nottingham and close to the QMC, it's an ideal home for anyone looking for quick access to campus and local amenities. With excellent public transport links, nearby shops, cafes, and a vibrant student community, this home offers everything you need for an enjoyable student living experience. Additionally, the property is close to the beautiful Wollaton Park, perfect for a relaxing stroll.

Each spacious bedroom comes fully furnished with a bed, desk, and ample storage, providing a comfortable space for both studying and relaxing. The property features a modern kitchen with all essential appliances and a cosy communal living area, perfect for socialising with housemates.

Perfect for those who enjoy green open spaces and a peaceful environment. Close to Wollaton Hall and Park, with good transport links to both universities. A popular location for Medical those in the medical professional due to it's proximity to the Queens Medical Centre (QMC) and the University of Nottingham main campus.





Open Plan Kitchen/ Dining Space

This kitchen has been completely refurbished to a high standard and is fitted with everything you need to host dinner parties or having a quiet night in. The kitchen is fitted with a electric cooker and a oven, perfect for unleashing your inner chef. The kitchen is perfect for socialising with a breakfast bar and stools looking in. The dining room is fitted with a large table with 6 chairs, with an abundance of natural light, this is a perfect space to enjoy meals. This space accommodates for all and it's perfect to host guests or enjoy your home-cooked meals.

Living Room

The living room is a perfect space for putting your feet up after a long day or relaxing with friends with large windows it brings lots of natural lighting in. The lounge has comfortable sofas it's a perfect space to relax with your feet up with guests or not! This is a perfect space for you to claim yours.

Bedroom

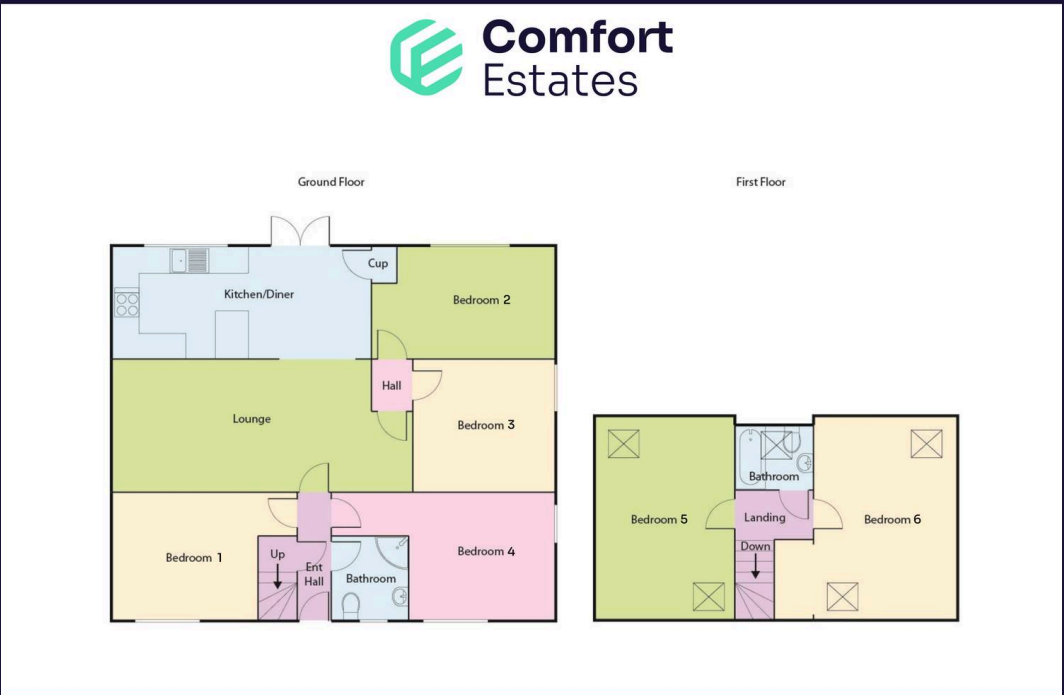
A large double bedroom fitted with everything you need to make the space your own. Each room has a desk, drawer and wardrobe with all the space and storage available for you.

Bathroom 1

Beautifully bright and airy bathroom finished to a high standard. The bathroom is fitted with a shower, toilet and sink.

Bathroom 2

Beautifully bright and airy bathroom finished to a high standard. The bathroom is fitted with a shower/bath combination, toilet and sink.





Comfort Estates

Comfort Estates, 47 Derby Road - NG1 5AW

0115 9338997 • info@comfortestates.co.uk • www.comfortestates.co.uk