



The Pinnacle Cottage Terrace, Nottingham
£1,425 pcm



The Pinnacle Cottage Terrace, Nottingham

Comfort Estates are delighted to offer this stylish apartment on The Ropewalk, a highly regarded location bordering The Park Estate. With generous bedrooms, a master with ensuite, plus its own balcony and parking it is a desirable space for those that want to be close to the city center and have great access beyond.

You will enjoy a thriving City centre on your doorstep, with plenty of shops, bars, restaurants, and theatres just a stone's throw away. This includes some of Comfort Estates' own favourite independent retailers located just off Canning Circus on Derby Road. There are plenty of transport links close by including Nottingham train station and the bus and tram network.

The property briefly comprises: - A spacious entrance hallway with two generous storage cupboards, an open plan lounge/kitchen overlooking the balcony, two very well-proportioned double bedrooms, one having an ensuite, and the main bathroom. The property has all appliances included, a secure door entry system, and gated parking.

This property is undoubtedly one of the finest city centre opportunities on the market today – call Comfort Estates now to book your viewing appointment.





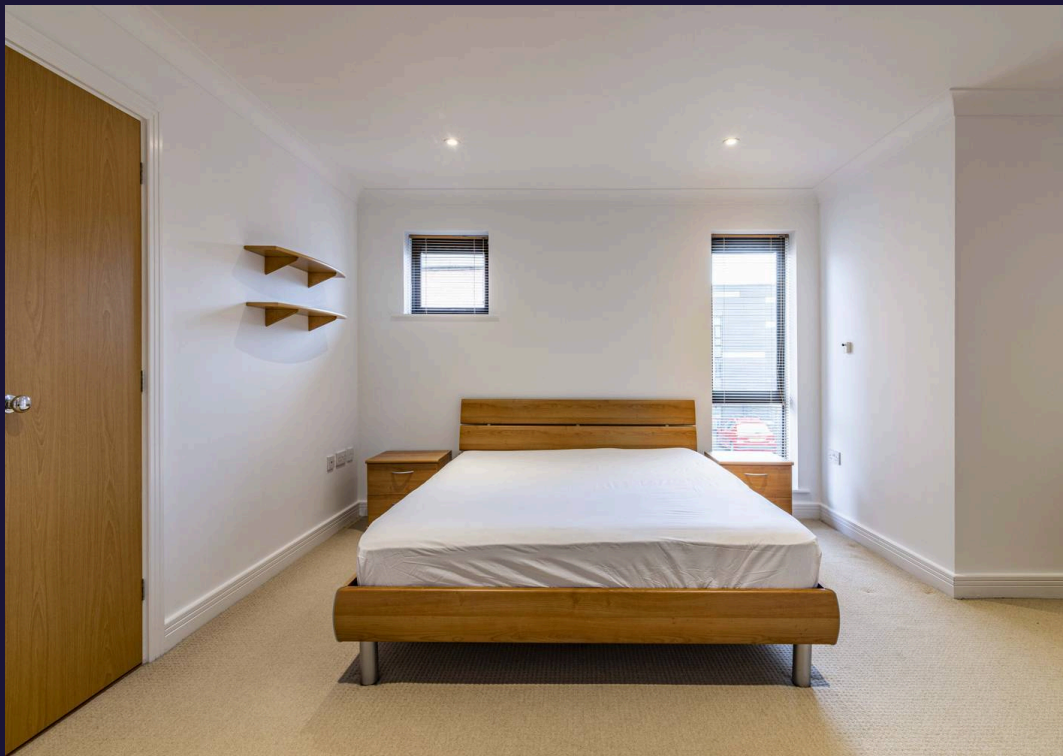
The Pinnacle Cottage Terrace, Nottingham

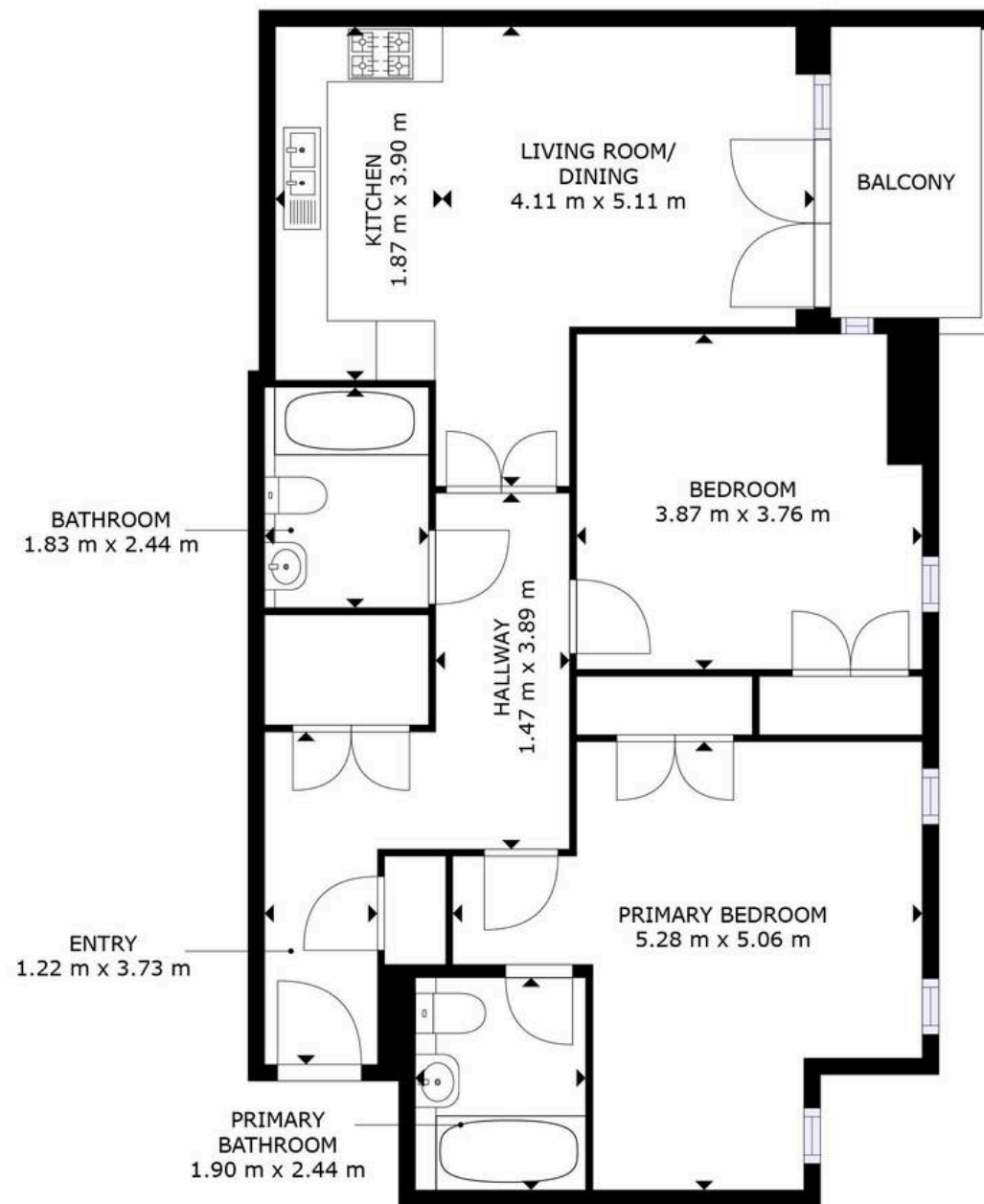
| Available from 26th October | Two Spacious Double Bedrooms | Master with ensuite | Two Bathrooms | Secure Parking | High Regarded Position | Borders The Park Estate | Fully Furnished |
Council Tax band: E

Tenure: Leasehold

EPC Energy Efficiency Rating: B

- Fully Furnished
- Secure Parking
- Sought-After Location
- Master with en-suite
- Balcony
- Two Bathrooms
- Gas Central Heating





FLOOR PLAN

GROSS INTERNAL AREA
FLOOR PLAN: 86 m²

SIZES AND DIMENSIONS ARE APPROXIMATE, ACTUAL MAY VARY.



Comfort Estates

Comfort Estates, 47 Derby Road - NG1 5AW

0115 9338997 • info@comfortestates.co.uk • www.comfortestates.co.uk