



Flat 1, Newcastle Drive, Nottingham  
£1,600 pcm





## Flat 1

Newcastle Drive, Nottingham

### Spacious 3-Bedroom Duplex in The Park Estate – Ideal for Sharers!

Comfort Estates are delighted to present this fantastic three-bedroom duplex apartment on the prestigious Newcastle Drive, within the sought-after Park Estate.

The property boasts a modern open-plan kitchen with a breakfast bar, a bright and spacious lounge with large windows overlooking the communal garden terrace, and three generously sized double bedrooms. Two bedrooms benefit from private en-suite bathrooms, while the third has access to a Jack and Jill bathroom.

Tastefully furnished and decorated throughout, the apartment also comes fully equipped with all kitchen appliances. Residents can enjoy the communal garden and terrace, perfect for relaxing outdoors.

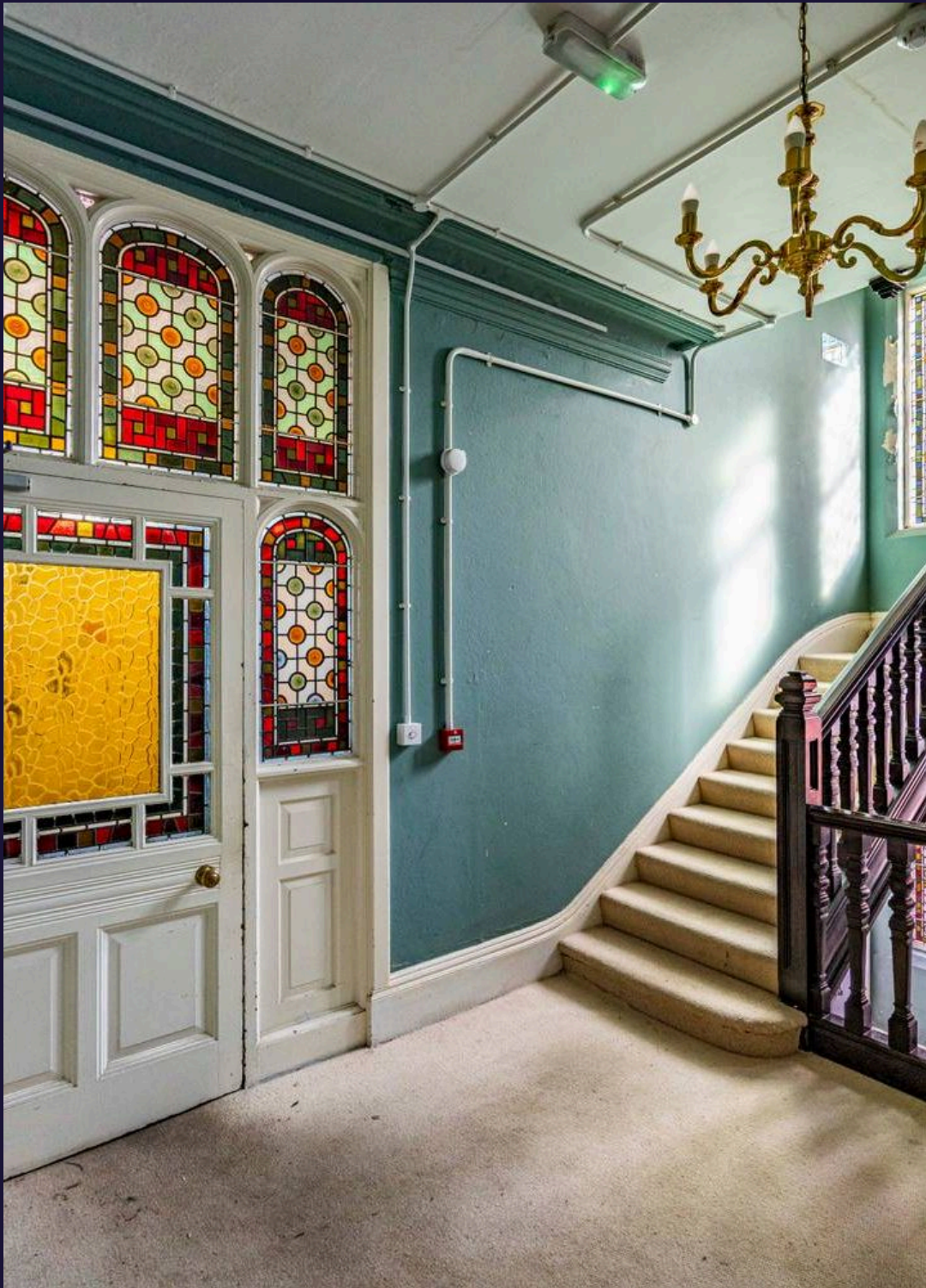
Additional benefits include free permit parking at the front of the building and stunning views across The Park.

Situated just a short walk from Nottingham City Centre, local shops, cafes, restaurants, and excellent transport links, The Park Estate offers the best of both worlds – peaceful surroundings with beautiful architecture, yet close to all the action.

Available now – book your viewing today!

### Spacious 3-Bedroom Duplex in The Park Estate – Ideal for Sharers!





## Flat 1

Newcastle Drive, Nottingham

| Three Double Bedrooms | Park Estate | Fully Furnished | Three Bathrooms | Free Permit Parking | Perfect For Three Sharers | Communal Garden | Duplex Apartment | Available Now | Council Tax band: B

EPC Energy Efficiency Rating: D

EPC Environmental Impact Rating:

- Three Double Bedrooms
- Three Bathrooms
- Free Permit Parking
- Communal Garden & Terrace
- Duplex Apartment
- Park Estate Location
- Available For 3 Sharers
- Walking Distance To Bus Stops And Local Amenities
- Available Now
- Fully Furnished





### Kitchen

14' 1" x 4' 4" (4.30m x 1.33m)

This modern galley-style kitchen is both stylish and practical, complete with a gas hob, extractor fan, oven, microwave, sink, and integrated appliances including a washing machine, dishwasher, and fridge. The space is finished with wooden worktops, black tiled flooring, and offers plenty of storage with both base and wall units. The kitchen flows seamlessly into the living area, making it ideal for cooking and entertaining.

### Living Room

16' 0" x 15' 3" (4.87m x 4.65m)

This spacious living room comes fully furnished with a large corner sofa, coffee table, and wall-mounted TV. The room is bright and welcoming with high ceilings, arched windows, and a feature fireplace. A standalone freezer is also provided next to the kitchen area. The spiral staircase leads directly down to one of the double bedrooms, adding character and charm to the space.

### Bedroom 1

15' 3" x 14' 7" (4.64m x 4.45m)

This spacious bedroom is accessed via the spiral staircase located in the living area. The bedroom is complete with a bedframe, mattress, bedside table, shelving unit, wardrobe, drawers and mirrors. The room also benefits from a large en-suite bathroom.

### Bedroom 1 Ensuite

8' 0" x 4' 10" (2.44m x 1.48m)

This spacious en-suite bathroom is also located down the spiral stair case and is neutrally decorated throughout. The bathroom is complete with a shower cubicle, toilet, sink, mirror and set of drawers for storage.







### **Bedroom 2**

14' 7" x 11' 6" (4.44m x 3.50m)

This generously sized ground floor bedroom comes fully furnished with a double bed and mattress, bedside cabinet, desk and chair, wardrobe, and shelving. The room also benefits from access to a Jack and Jill style bathroom, conveniently shared via an adjoining entrance.

### **Bathroom**

8' 8" x 5' 10" (2.64m x 1.79m)

This stylish Jack and Jill bathroom is conveniently located on the ground floor, with access from one of the bedrooms. It offers a modern shower cubicle, toilet, sink with cabinet, and fitted shelving.

### **Bedroom 3**

13' 11" x 6' 4" (4.24m x 1.93m)

Bedroom three is set to the rear of the apartment on the lower level, offering a quiet and private space. The room comes furnished with a double bed, mattress, bedside table, wardrobe and drawers, and also benefits from its own en-suite bathroom for added convenience.

### **Room 3 Ensuite**

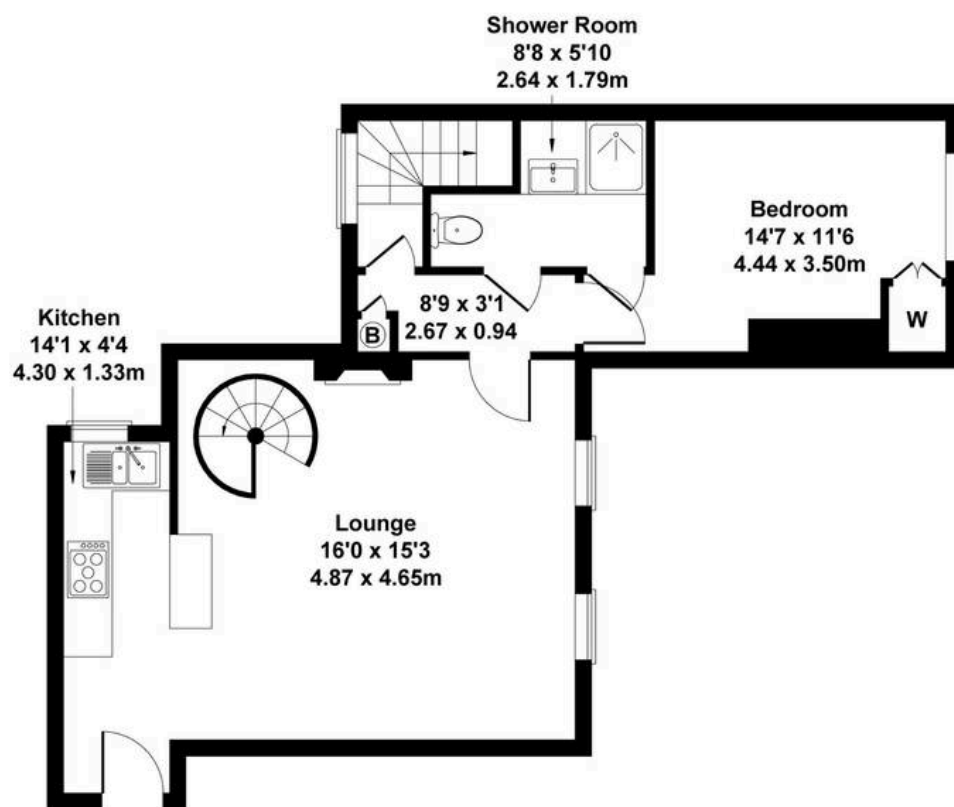
8' 10" x 3' 5" (2.68m x 1.03m)

The en-suite, located alongside bedroom three at the rear of the lower level, is stylish and practical. It features a shower cubicle, toilet, sink and mirror, offering a private and convenient space.

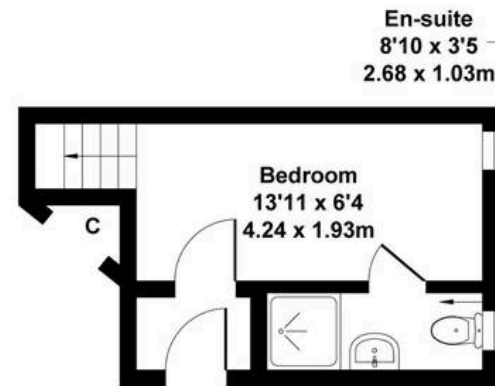




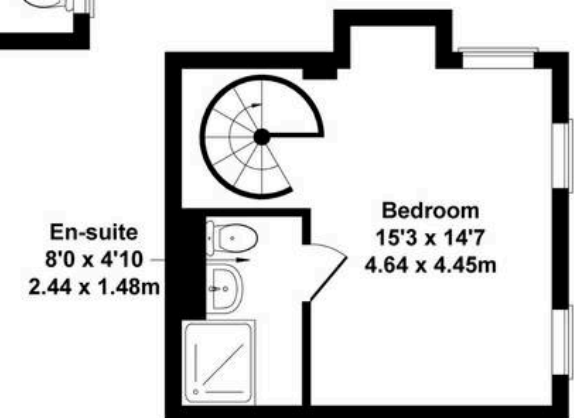
Approximate Gross Internal Area  
893 sq ft - 83 sq m



**GROUND FLOOR**



**LOWER GROUND**



**LOWER GROUND**

Not to Scale. Produced by The Plan Portal 2025  
For Illustrative Purposes Only.





## Comfort Estates

Comfort Estates, 47 Derby Road - NG1 5AW

0115 9338997 • [info@comfortestates.co.uk](mailto:info@comfortestates.co.uk) • [www.comfortestates.co.uk](http://www.comfortestates.co.uk)