



Flamingo Court, Nottingham
£895 pcm



Flamingo Court

Nottingham, Nottingham

Comfort Estates are delighted to present this beautifully refurbished one-bedroom apartment in the sought-after Castle Marina development.

This stylish, ground floor property offers an open plan kitchen and living area, a spacious double bedroom, and a brand-new bathroom.

The living space is fully furnished with a new sofa, additional seating, desk, dining table and chairs, and features a sliding patio door leading out to a private patio overlooking the communal gardens. The newly fitted kitchen comes complete with appliances, plenty of worktop space and ample storage.

The bedroom benefits from a new double bed, mattress, bedside tables with lamps and wardrobes. The new bathroom is finished to a high standard with a large shower cubicle, toilet, sink with cabinet, and mirror.

Castle Marina is a highly desirable location with excellent local amenities on your doorstep, including supermarkets, restaurants, a gym, and home stores. The canal also offers a scenic walking route nearby. Nottingham City Centre, train station, and major transport links are all within easy reach.

Comfort Estates are delighted to present this beautifully refurbished one-bedroom apartment in the sought-after Castle Marina development.

This stylish, ground floor property offers an open





Flamingo Court

Nottingham, Nottingham

| One Bedroom Apartment | New Kitchen & Bathroom | Castle Marina | Fully Furnished | Private Patio | Communal Gardens | Off Street Parking | Available Now |

Council Tax band: A

EPC Energy Efficiency Rating: E

EPC Environmental Impact Rating: E

- One Bedroom Apartment
- Castle Marina
- Walking Distance To Local Amenities
- Open Plan Kitchen & Living Area
- Private Patio
- Off Road Parking
- New Bathroom & Kitchen
- Fully Furnished
- Communal Gardens





Open Plan Kitchen & Living Area

Recently refurbished, this open-plan living and kitchen area offers a modern, bright, and welcoming space. The living area is furnished with a new sofa, additional seating, cabinet, and dining table with chairs, and benefits from sliding patio doors leading out to a private patio overlooking the communal gardens. The brand-new grey and white kitchen is fully fitted with a hob, oven, sink, washing machine, and ample storage cabinets.

Bedroom

This modern double bedroom is neutrally decorated with bright white walls and wood-effect flooring. It comes fully furnished with a brand-new bed frame and mattress, bedside cabinets with lamps, and spacious wardrobes for storage.

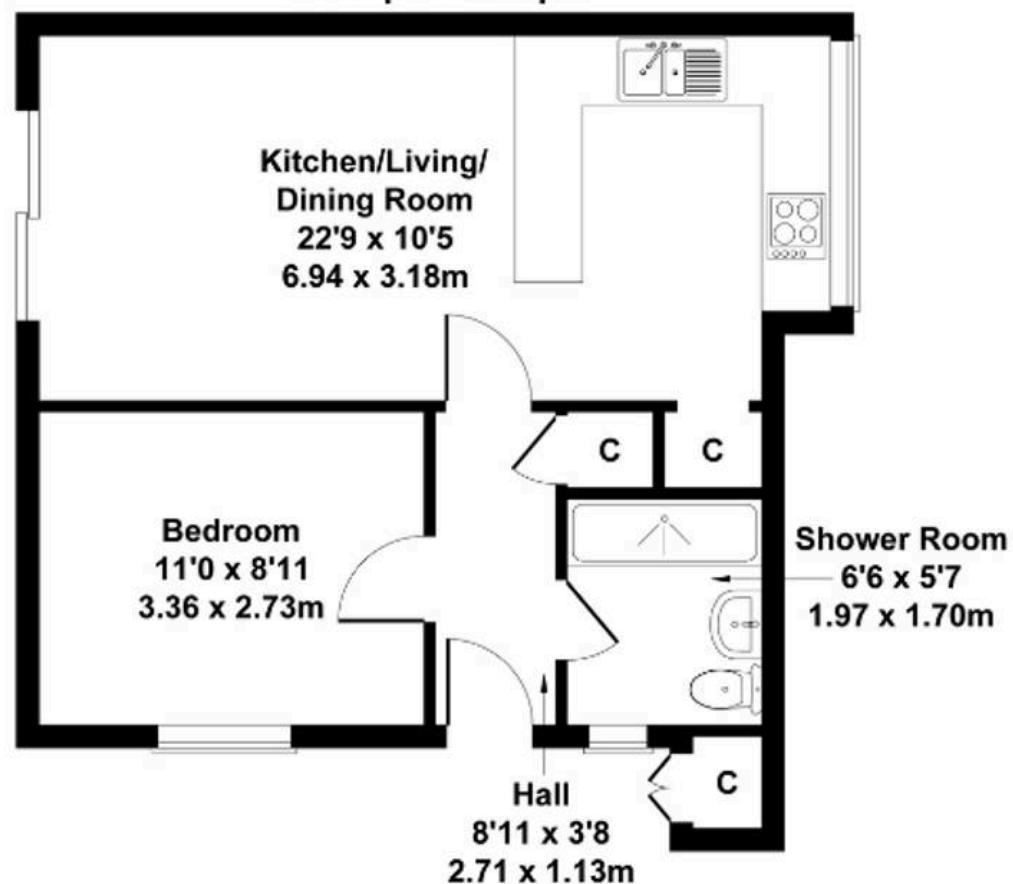
Bathroom

Brand new bathroom featuring a spacious shower cubicle, modern sink with storage cabinet, toilet, and wall-mounted mirror, finished with sleek contemporary tiling.





Approximate Gross Internal Area
431 sq ft - 40 sq m



Not to Scale. Produced by The Plan Portal 2025
For Illustrative Purposes Only.



Comfort Estates

Comfort Estates, 47 Derby Road - NG1 5AW

0115 9338997 • info@comfortestates.co.uk • www.comfortestates.co.uk