



A top floor apartment ideally located in the heart of Teignmouth with one double bedroom, a stone's throw from the beach, shops, eateries and amenities, with stylish décor and generously proportioned rooms, a viewing is highly recommended.

Flat 6, 22 Wellington Street | Teignmouth | TQ14 8HW





PROPERTY TYPE

Apartment
Leasehold



SIZE

527 sq ft



LOCATION

Town



AGE

Modern



BEDROOMS

1



RECEPTION ROOMS

1



BATHROOMS

0



WARMTH

Electric Heating



PARKING

NA



OUTSIDE SPACE

NA



EPC RATING

72 C



COUNCIL TAX BAND

A



in a nutshell...

- In the Heart of Teignmouth Town Centre
- Top Floor Apartment
- One Double Bedroom
- Modern Kitchen
- Light & Airy Living Room
- A Stone's Throw from Beach
- Amid Shops, Eateries & Amenities
- Viewing Recommended



the details...

Check out this excellent, top floor, one bedroom apartment, conveniently located amid the shops, eateries, and amenities, a stone's throw from the beach, in the popular seaside town of Teignmouth.

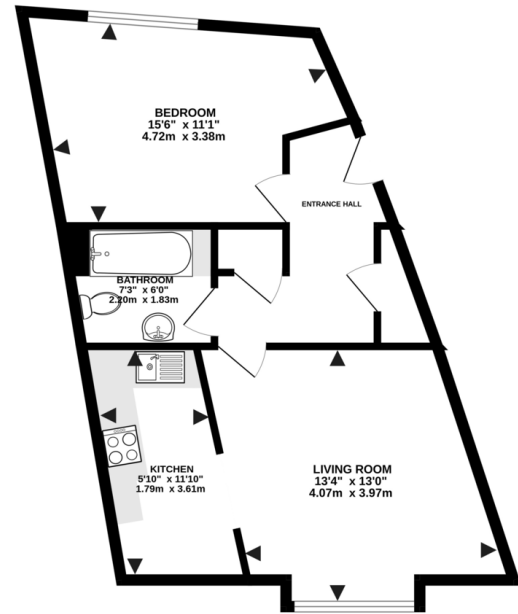
The communal ground-floor entrance, with a remote access intercom system, leads into a lobby that is clean and well maintained with post-boxes for each apartment. A staircase leads up, with a decorative stained-glass window, to the entrance of the apartment on the top floor.

Inside, it is well-presented with stylish décor throughout, and it feels warm with electric storage heating.

The apartment is generously proportioned with asymmetrical rooms, and comprises, an entrance hallway with two built-in cupboards, a light and airy double bedroom with a wide dormer window, a living room with another wide dormer window filling the room with light and overlooking Wellington Street, semi open-plan to a decent-sized kitchen that has plenty of worktop and cupboard space, a fan-oven, ceramic hob, floor space for a fridge/freezer, and space with plumbing for a washing machine, and completing the accommodation is a bathroom, containing a bath with a shower above, a basin and a WC.

Tenure – Leasehold
Council Tax Band - A

TOP FLOOR
527 sq.ft. (49.0 sq.m.) approx.



TOTAL FLOOR AREA : 527 sq.ft. (49.0 sq.m.) approx.

Whilst every attempt has been made to ensure the accuracy of the floorplan contained herein, measurements of areas, windows, rooms and any other items are approximate and no responsibility is taken for any error, omission or mis-statement. This plan is for illustrative purposes only and should be used as such by any prospective purchaser. The services, systems and appliances shown have not been tested and no guarantee as to their operability or efficiency can be given.
Made with Metropix 02023



the location...

Teignmouth has a great deal to offer, not least its superb sandy beach, award winning children's play area and the nearby golf courses. Water sport activities are well catered with two sailing clubs, deep water moorings and a diving school. This picturesque town has a Victorian Pier and new theatre and a wide selection of bars and restaurants, and well-known shops and supermarkets including Lidl and Morrisons.

Shopping

Late night pint of milk: Co-op 1 minute walk
Town centre: Situated in Town Centre
Supermarket: Lidl 0.2 miles

Relaxing

Beach: Teignmouth 0.1 miles
Park: 0.1 miles

Travel

Bus stop: 1 minute walk
Train station: Teignmouth 0.2 miles
Main travel link: A380 7.4 miles
Airport: Exeter 18.6 miles

Schools

Teignmouth Community School: 0.4 miles
Our Lady & St Patrick's Primary School: 0.9 miles

Please check Google maps for exact distances and travel times.

Property postcode: TQ14 8HW

Need a more complete picture? Get in touch with your local branch...

Tel **01626 870 870**
Email **teignmouth@completeproperty.co.uk**
Web **completeproperty.co.uk**

Complete
13 Wellington Street
Teignmouth
Devon
TQ14 8HW



Our note. For clarification we have prepared these sales particulars as a general guide and have not carried out a detailed survey nor tested the services, appliances or fittings. Room sizes should not be relied upon for carpets or furnishings. If there are any important matters which are likely to affect your decision to buy, please contact us before viewing this property. These particulars, whilst believed to be accurate, are set out as a general outline only for guidance and do not constitute any part of an offer or contract. Intending purchasers should not rely on them as statements of representation of fact, but must satisfy themselves by inspection or otherwise as to their accuracy. No person in the employment of Complete Property Services has the authority to make or give any representation or warranty in respect of the property.

SKETCH PLAN FOR ILLUSTRATIVE PURPOSES ONLY. All measurements and sizes and locations of walls, doors, window fittings and appliances are shown conventionally and are approximate only and cannot be regarded as being a representation either by the Seller or his Agent. We hope that these plans will assist you by providing you with a general impression of the layout of the accommodation. The plans are not to scale nor accurate in detail. © Unauthorised reproduction prohibited.

As part of the service we offer we may recommend ancillary services to you which we believe will help with your property transaction. We wish to make you aware that should you decide to proceed we will receive a referral fee. This could be a fee, commission, payment or other reward. We will not refer your details unless you have provided consent for us to do so. You are not under

any obligation to provide us with your consent or to use any of these services, but where you do you should be aware of the following referral fee information. You are also free to choose an alternative provider. To find out more about this, please speak to a member of the team.



Are you selling a property too? Call us to get a set of property details like these...

selling

letting

land &
new homes

signature
homes

complete.