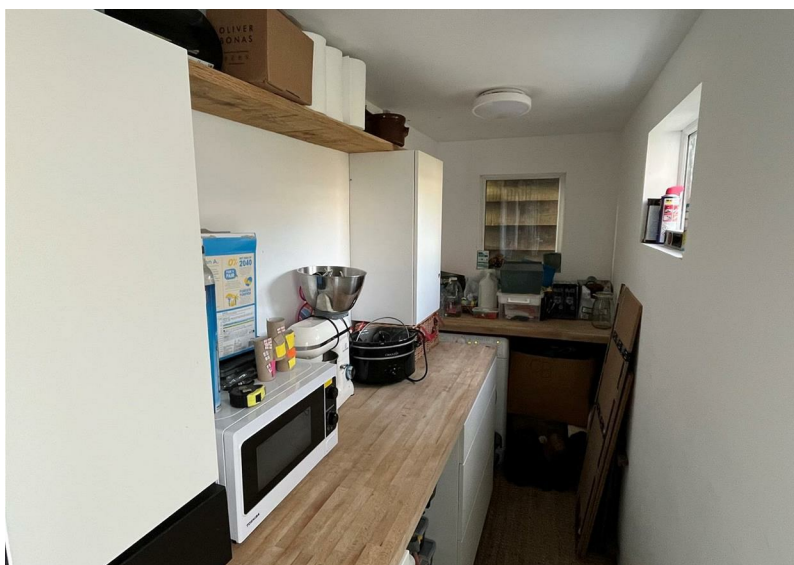
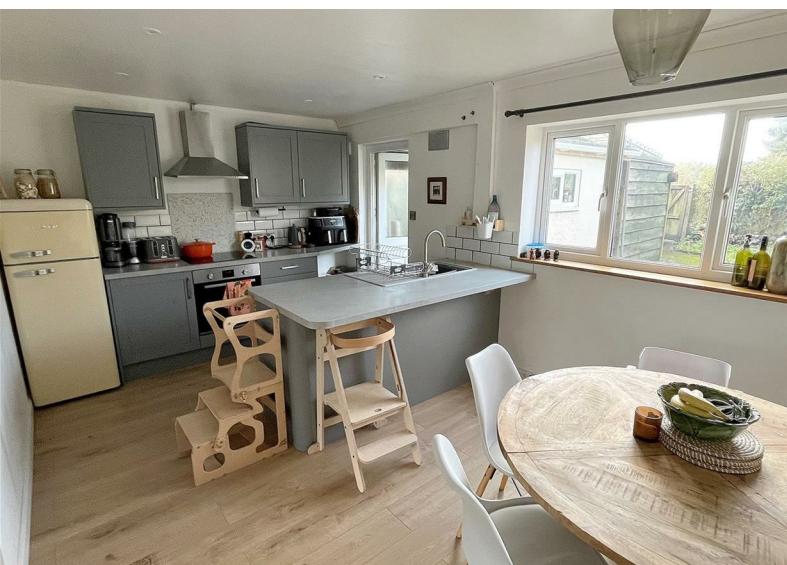




23 Bidders Close
Dartmouth
Price £300,000

Freeborns
ESTATE AGENTS

A well presented three bedroom family home set in this sought after location in Stoke Fleming with easy access to the local school, shop, Blackpool Sands and bus routes to Dartmouth.



23 Bidders Close, Stoke Fleming, Dartmouth, TQ6 0NZ

THE ACCOMMODATION COMPRISES:

(ALL MEASUREMENTS APPROX)

ENTRANCE HALL

Staircase to first floor, doors to;

SITTING ROOM

Double glazed window to front, radiator, built-in shelves, laminate flooring, opening to;

KITCHEN/DINER

Double glazed window to rear, double glazed frosted glazed door to utility room, range of base and wall mounted kitchen cupboards and drawer units, work surface, inset four ring electric induction hob, stainless steel extractor chimney hood above and stainless steel built-in oven under, tiled splashbacks. Further storage cupboards with work surface and breakfast bar area, inset single drainer acrylic sink with swan neck mixer tap, laminate flooring, recessed ceiling downlighters.

UTILITY ROOM

Dual aspect with double glazed windows to rear and to side, drawer units with work surface, wall mounted cupboard, space and plumbing for a washing machine, double glazed door to side.

FIRST FLOOR LANDING

Doors to;

BEDROOM ONE

Double glazed window to rear, recessed storage cupboard.

BEDROOM TWO

Double glazed window to front, staircase to the loft room.

BEDROOM THREE

Double glazed windows to front.

FAMILY BATHROOM

Double glazed frosted window to rear, modern white suite comprising a panelled bath with shower over, vanity unit with inset wash hand basin and mixer tap, close coupled WC, part tiled walls, wall mounted chrome heated towel rail.

LOFT ROOM

FRONT GARDEN

Mainly lawned with pathway leading to the front door.

REAR GARDEN

Mainly lawned, pathway leading to a rear access gate, garden shed.

LOCAL AUTHORITY

South Hams District Council

COUNCIL TAX BAND: B

EPC: F

CONSUMER PROTECTION FROM UNFAIR TRADING

These details are for guidance only and complete accuracy cannot be guaranteed. If there is any point, which is of particular importance, verification should be obtained. They do not constitute a contract or part of a contract. All measurements are approximate. No guarantee can be given with regards to planning permissions or fitness for purpose. No apparatus, equipment, fixture or fitting has been tested. Items shown in photographs are NOT necessarily included. Interested parties are advised to check availability and make an appointment to view before travelling to see a property.

23 Bidders Close, Stoke Fleming

Approximate Gross Internal Area
1023 sq ft - 95 sq m



GROUND FLOOR

FIRST FLOOR

SECOND FLOOR

SKETCH PLAN FOR ILLUSTRATIVE PURPOSES ONLY
Produced by The Plan Portal/Potterplans Ltd. 2026



1 Mayors Avenue, Dartmouth, Devon, TQ6 9NF

Tel: 01803 832 045

info@freebornsproperty.co.uk

www.freebornsproperty.co.uk

Freeborns
ESTATE AGENTS

