

Lochgelly Road, Cowdenbeath, Fife, KY4 9HD



Working harder for you



2 bedroom



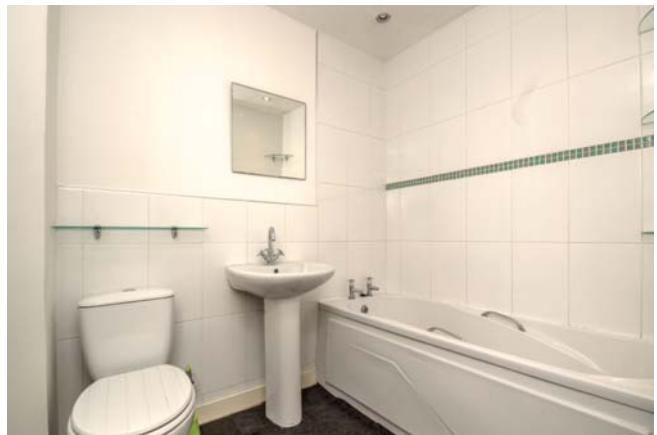
1 public



1 bathroom

| | | |
|------------------|-------------------|---------------|
| Lounge & Kitchen | (19' 0" x 17' 1") | (5.8m x 5.2m) |
| Bedroom 1 | (9' 10" x 7' 3") | (3.0m x 2.2m) |
| Bedroom 2 | (9' 10" x 4' 0") | (3.0m x 2.6m) |
| Bathroom | (13' 1" x 4' 0") | (4.0m x 1.2m) |

A superb two bedroom flat
close to amenities and
transport links



- + A spacious two bedroom ground floor flat with gardens
- + Ideally located for all of Cowdenbeath's amenities as well as road links to and from Edinburgh
- + Ideally located for amenities including Cowdenbeath High Street only a short walk from the property
- + Walking distance from Cowdenbeath Train Station offering easy commuting to and from Edinburgh
- + Large open plan lounge and kitchen with ample worktop space, breakfast bar and room for white

goods

- + Rear hallway leading to rear facing bedrooms with storage space
- + Modern tiled family bathroom with three piece suite
- + Easy maintenance gardens to the rear, ample parking to the front with additional parking found to the rear of the property
- + GCH and D/G
- + EPC Rating – A, Council Tax Band - C



Sharing is caring!

6/8 Bonnar Street,
Dunfermline KY12 7JR

T: 01383 629720 F: 01383 621333, LP.32.

espc

W: maloco.co.uk