

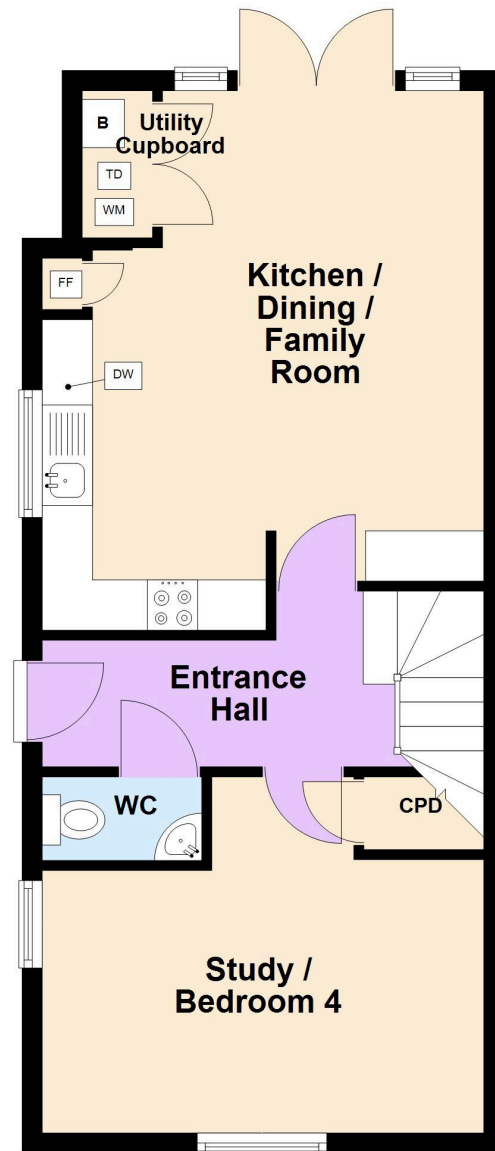


44 Turner Road, Yate, BS37 7EU

£395,000

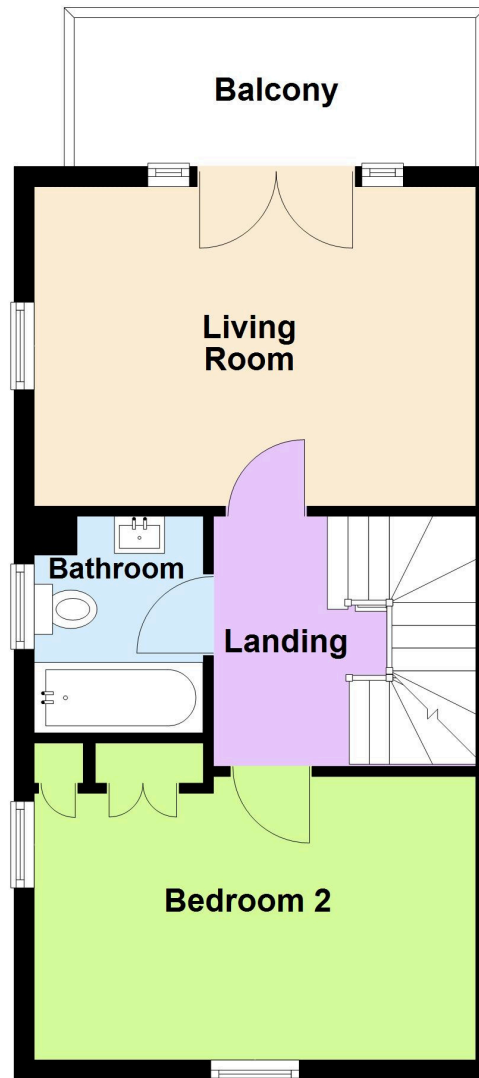
Ground Floor

Approx. 44.9 sq. metres (483.7 sq. feet)



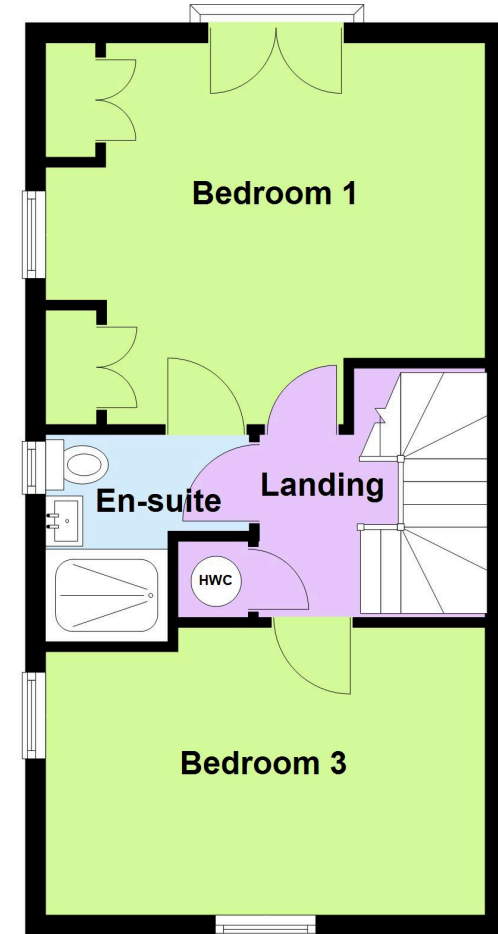
First Floor

Approx. 38.2 sq. metres (411.3 sq. feet)



Second Floor

Approx. 38.0 sq. metres (408.9 sq. feet)



Total area: approx. 121.1 sq. metres (1303.9 sq. feet)

This plan is for illustrative purposes only. Whilst every care has been taken to ensure the accuracy of the floorplan, measurements, door/window positions and rooms are approximate and no responsibility is taken for any error/omissions
Plan produced using PlanUp.