



10 Hoylake

Yate, Bristol, BS37 4HG

£245,000

Property Features

- Mid-terrace bungalow
- Two double bedrooms
- Living / Dining Room
- Gas central heating
- Double glazing
- West-facing 55ft rear garden
- Garage in a nearby block
- Good order throughout
- No chain



Full Description

ENTRANCE

Via half double glazed door into entrance porch.

ENTRANCE PORCH

Half opaque double glazed door into lounge.

LOUNGE

16' 5" x 15' 0" (5m x 4.57m)

Double glazed window to front, fireplace with log effect electric fire, storage cupboard, two radiators.



KITCHEN

13' 9" x 7' 9" (4.19m x 2.36m)

Double glazed window and door to rear, range of white gloss wall, base and drawer units with rolled edge work surfaces and upstands, built-in electric oven and hob with extractor chimney over, integrated washing machine and dishwasher, space for fridge/freezer, single drainer sink unit with mixer taps, cupboard housing wall mounted gas fired boiler, access to loft space.

INNER HALL

Shelved storage cupboard.



BEDROOM ONE

13' 9" x 9' 10" (4.19m x 3m)

Double glazed window to rear, radiator, built-in wardrobe.

BEDROOM TWO

13' 11" x 7' 10" (4.24m x 2.39m)

Double glazed window to front, radiator.



WET ROOM

Opaque double glazed window to rear, shower area, vanity wash hand basin, W.C, stainless steel towel radiator.

FRONT GARDEN

Laid to interlocking bricks with low brick wall frontage.

REAR GARDEN

West facing garden measuring approx. 55ft (16.76m) enclosed via fencing, covered patio area to the immediate rear leads to a further patio area and artificial level lawn, timber sleeper border, garden shed, outside cold tap, rear pedestrian access.

GARAGE

Tenure - Freehold

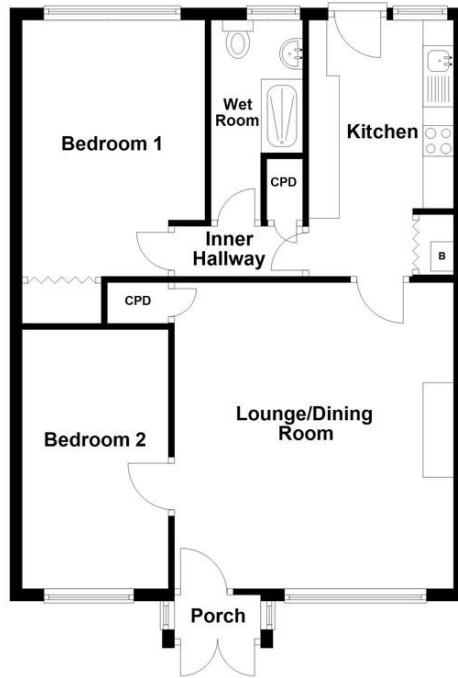
Council Tax Band – C

AGENTS NOTE

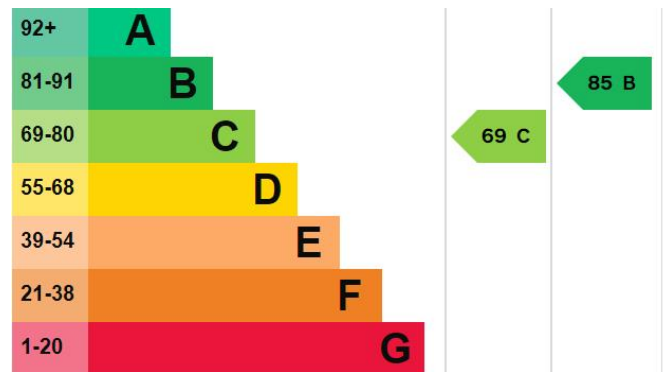
Please note the property is of Steel Frame Construction.



Ground Floor
Approx. 66.8 sq. metres (718.6 sq. feet)



Total area: approx. 66.8 sq. metres (718.6 sq. feet)



Unit 2 Rounceval
Mews
Rounceval Street
Chipping Sodbury
Bristol
BS37 6AS

www.bundyandbond.co.uk
info@bundyandbond.co.uk
01454 540200

Agents Note: Whilst every care has been taken to prepare these sales particulars, they are for guidance purposes only. All measurements are approximate and for general guidance purposes only and whilst every care has been taken to ensure their accuracy, they should not be relied upon and potential buyers are advised to recheck the measurements