

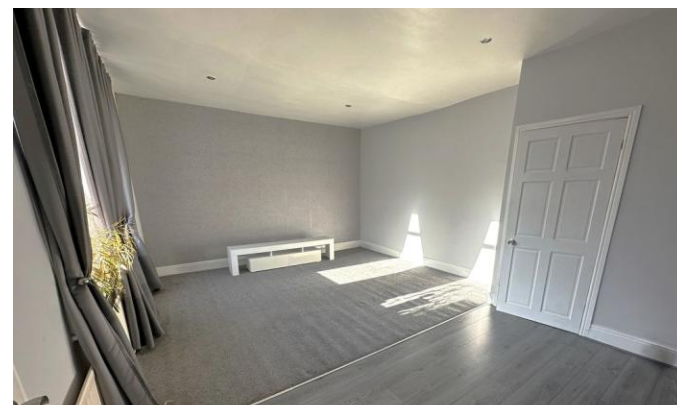


Northbourne Street

Deckham
Gateshead
NE8 4AH

£795 pcm

Upper Floor Flat
Two Bedrooms
Available Immediately
Close to All Amenities
Ideal for a Variety of Tenants





Safe and Secure welcome to the rental market this two bedroom upper floor flat. Offer on an unfurnished basis. Situated on Northbourne Street, Deckham, the deceptively spacious property is conveniently situated within direct access of all local amenities and public transport links.

Briefly comprising of: an entrance hall, lounge/diner, kitchen, two bedrooms, family bathroom and rear yard.

If you are interested in the property please give our office a call on 0191 385 4477.

ENTRANCE HALL

Double glazed entrance door and staircase to first floor.

LOUNGE

14' 1" x 18' 4" (4.3m x 5.6m) Double glazed window to rear, radiator and telephone point.

KITCHEN

10' 2" x 6' 6" (3.1m x 2.0m) Part tiled walls, fitted wall and base units, work surfaces, single bowl sink and drainer unit, integrated electric oven and hob with extractor hood over, double glazed window to side and double glazed door to rear.

FIRST FLOOR LANDING

Access to loft space.

MASTER BEDROOM



13' 1" x 14' 9" (4.0m x 4.5m) Double glazed window to front and radiator.

BEDROOM 2

8' 2" x 7' 6" (2.5m x 2.3m) Double glazed window to front and radiator.

BATHROOM

Part tiled walls, white three piece suite comprising of panelled bath with shower over, pedestal wash hand basin, low level WC, radiator, extractor fan and double glazed window to side.

REAR YARD

Mainly paved area enclosed by walled boundaries and gated access.



Local Authority
Council Tax Band
EPC Rating

Gateshead Metropolitan Borough
Council
A
~

Houghton le Spring
24-25 Westbourne Terrace
Houghton Le Spring
Tyne And Wear
DH4 4QT

Contact
0191 3854477
info@safeandsecureproperties.co.uk
o.uk
safeandsecureproperties.co.uk

Agents Note: Whilst every care has been taken to prepare these particulars, they are for guidance purposes only. All measurements are approximate and are for general guidance purposes only and whilst every care has been taken to ensure their accuracy, they should not be relied upon and potential buyers/tenants are advised to recheck the measurements.