



50 Greenlands

Jarrow
Tyne & Wear
NE32 4PF

£850 pcm

Three Bedrooms
End Terrace
Immaculate Throughout
Recently Refurbished
Ideal Family Home
Available Now





Safe & Secure Properties welcome to the rental market this beautifully presented three bedroom end-terrace property. This property has been recently refurbished and offer spacious living accommodation. The property benefits from gas central heating and double glazing.

Suitable for a variety of tenants and situated close to the A19, this property has ideal transport links.

ENTRANCE HALL

Double glazed entrance door, double glazed windows to front, staircase to first floor, spindle banister and radiator.

LIVING ROOM

16' 11" x 12' 10" (5.17m x 3.92m) Double glazed window to front, television point and radiator.

KITCHEN

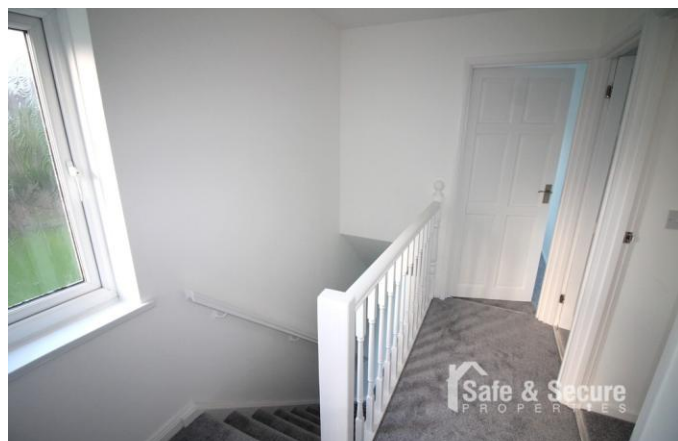
8' 1" x 16' 10" (2.48m x 5.14m) Fitted wall and base units, work surfaces, single drainer sink, built-in electric oven, built-in electric hob, extractor fan, space for washing machine, tiled walls, large storage cupboard, radiator, double glazed door to rear and double glazed windows to rear.

LANDING

Double glazed window to side and access to loft space.

BEDROOM

11' 11" x 10' 5" (3.64m x 3.18m) Double glazed



window to rear and radiator.

BEDROOM

13' 2" x 9' 10" (4.03m x 3.00m) Double glazed window to front, storage cupboard and radiator.

BEDROOM

10' 4" x 6' 8" (3.15m x 2.05m) Double glazed window to front and radiator.

BATHROOM

White three piece suite comprising of panelled bath, with shower over, pedestal wash hand basin, low level wc, tiled walls, heated towel rail, extractor fan and double glazed window to rear.

FRONT GARDEN

Enclosed gardens to front and side, laid mainly to lawn and gate access

REAR GARDEN

Enclosed rear garden, laid mainly to lawn, paved area and gated access.



Local Authority
Council Tax Band
EPC Rating

South Tyneside Council

A

D



Houghton le Spring
24-25 Westbourne Terrace
Houghton Le Spring
Tyne And Wear
DH4 4QT

Contact
0191 3854477
info@safeandsecureproperties.c
o.uk
safeandsecureproperties.co.uk

Agents Note: Whilst every care has been taken to prepare these particulars, they are for guidance purposes only. All measurements are approximate and are for general guidance purposes only and whilst every care has been taken to ensure their accuracy, they should not be relied upon and potential buyers/tenants are advised to recheck the measurements.