



20 Exeter Street

Pallion
Sunderland
SR4 6QX

£725 pcm

Two Bedrooms
Mid Terraced Cottage
Gas Central Heating
Double Glazing
Recently Refurbished
Early Viewing Recommended





Safe and Secure welcome to the rental market this two bedroom mid-terraced cottage style house, available immediately on an unfurnished basis. Situated on Exeter Street, Pallion, the property is within easy access to all local amenities as well as Sunderland Royal Hospital. The property's ideal location also provides access to public transport links including the Metro.

ENTRANCE HALL

Double glazed entrance door and double glazed window to front.

LOUNGE

13' 6" x 10' 8" (4.13m x 3.26m) Double glazed window to rear, picture rail and radiator.

KITCHEN

12' 5" x 6' 2" (3.79m x 1.89m) Fitted wall and base units, work surfaced, single drainer sink, built-in electric oven built-in electric hob, extractor hood, space for washing machine, tiled walls, radiator, double glazed window to side and double glazed door to side.

BEDROOM

13' 10" x 11' 11" (4.24m x 3.64m) Double glazed window to front, telephone point, television point, coving to ceiling, ceiling rose and radiator.

BEDROOM

6' 5" x 10' 2" (1.96m x 3.12m) Double glazed window to rear and radiator.



BATHROOM

White three piece suite comprising of panelled bath, with shower over, pedestal wash hand basin, low level wc, tiled walls, radiator and double glazed window to side.

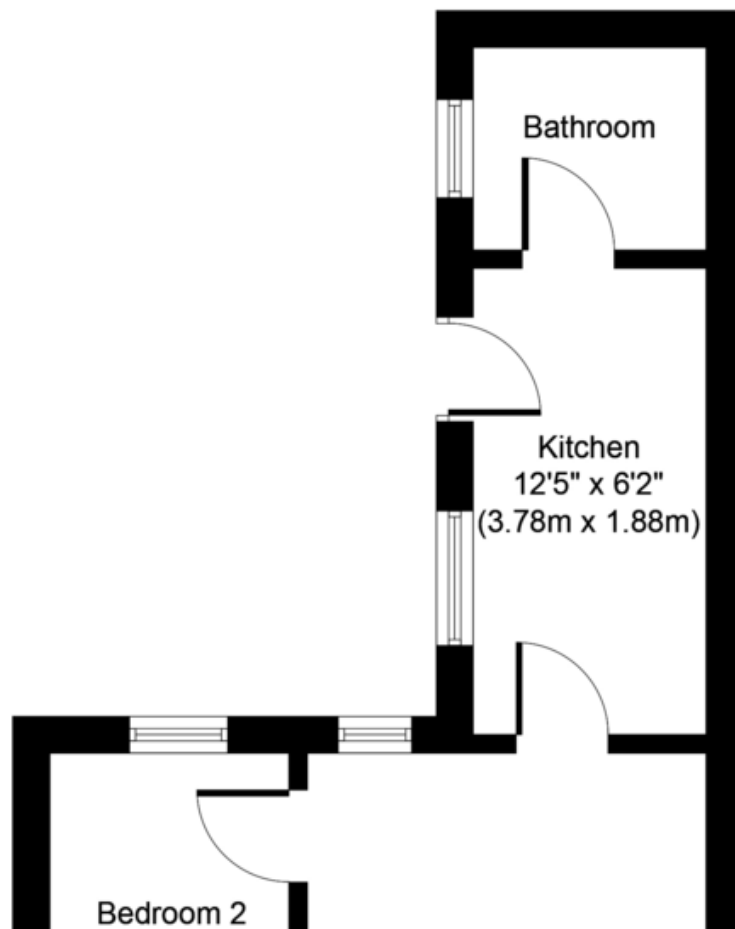
YARD

Large enclosed rear yard with gate access.



Local Authority
Council Tax Band
EPC Rating

D



Houghton le Spring
24-25 Westbourne Terrace
Houghton Le Spring
Tyne And Wear
DH4 4QT

Contact
0191 3854477
info@safeandsecureproperties.co.uk
o.uk
safeandsecureproperties.co.uk

Agents Note: Whilst every care has been taken to prepare these particulars, they are for guidance purposes only. All measurements are approximate and are for general guidance purposes only and whilst every care has been taken to ensure their accuracy, they should not be relied upon and potential buyers/tenants are advised to recheck the measurements.