

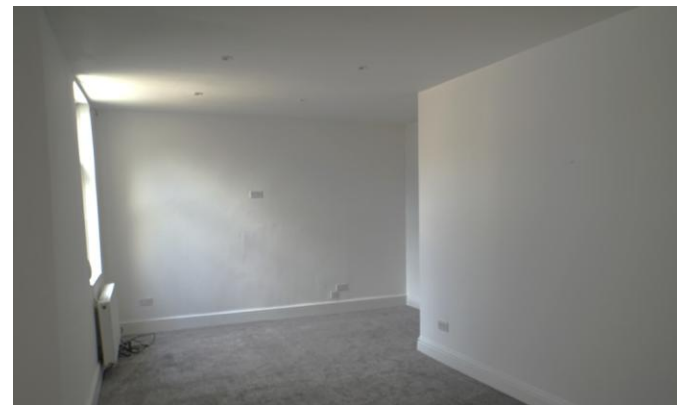


32 Midmoor Road

Pallion
Sunderland
SR4 6NT

£625 pcm

End of Terrace Cottage
Two Bedrooms
Available Immediately
Close to All Amenities
Ideal for a Variety of Tenants





Safe and Secure welcome to the rental market this two bedroom end of terrace cottage, available immediately on an unfurnished basis. Situated on Midmoor Road, Pallion, the property would make an excellent home for a variety of tenants benefitting from being within direct access to all local amenities.

Briefly comprising of: a lounge, kitchen, two bedrooms, family bathroom and yard to rear.

If you are interested please give our office a call on 0191 385 4477.

LOUNGE

22' 7" x 13' 9" (6.9m x 4.2m) Double glazed window to front and rear, two radiators and television point.

KITCHEN

9' 11" x 10' 2" (3.04m x 3.11 m) Part tiled walls, fitted wall and base units, work surfaces, 1 and 1/2 bowl sink and drainer unit, combination boiler, radiator, double glazed window to rear and double glazed door to rear.

MASTER BEDROOM

9' 3" x 12' 5" (2.82m x 3.81 m) Double glazed window to side and radiator.

BEDROOM 2

10' 9" x 10' 5" (3.3m x 3.2m) Double glazed window to side and radiator.

BATHROOM

Tiled walls, white four piece suite comprising of a panelled bath, step in shower cubicle, pedestal wash hand basin, low level WC, radiator, extractor fan and double glazed window to front.

REAR YARD

Paved area providing rear vehicular access.



Local Authority
Council Tax Band
EPC Rating

Sunderland City Council

A

TBC

Houghton le Spring

24-25 Westbourne Terrace
Houghton Le Spring
Tyne And Wear
DH4 4QT

Contact

0191 3854477
info@safeandsecureproperties.c
o.uk
safeandsecureproperties.co.uk

Agents Note: Whilst every care has been taken to prepare these particulars, they are for guidance purposes only. All measurements are approximate and are for general guidance purposes only and whilst every care has been taken to ensure their accuracy, they should not be relied upon and potential buyers/tenants are advised to recheck the measurements.