



47 Brookside Crescent

Blakelaw
Newcastle
NE5 3LY

£725 pcm

Two Bedrooms
Upper Flat
Gas Central Heating & Double Glazing
Close to Local Amenities & Transport
Links
Available Now
Viewing Recommended



ENTRANCE HALL

Entrance door and staircase to first floor.

LOUNGE/DINER

13' 3" x 13' 10" (4.06m x 4.24m) Double glazed window to front and radiator.

KITCHEN

7' 11" x 8' 10" (2.42m x 2.71 m) Fitted wall and base units, work surfaces, 1 1/2 bowl sink and drainer unit, integrated electric oven, integrated gas hob, extractor hood, space for washing machine, radiator and double glazed window to front.

FIRST FLOOR LANDING

Staircase leading to loft space.

MASTER BEDROOM

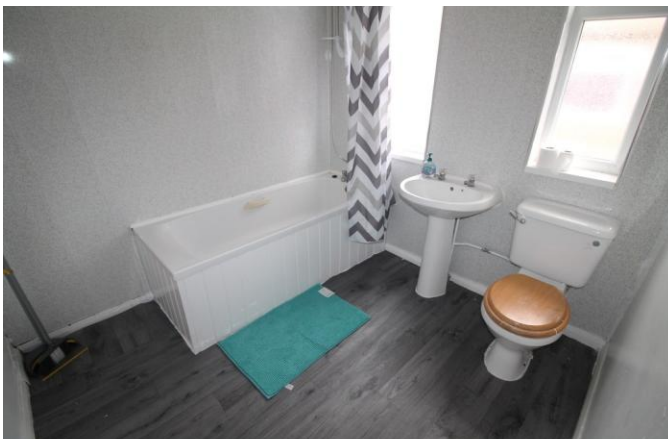
12' 8" x 13' 3" (3.87m x 4.06m) Double glazed window to rear and radiator.

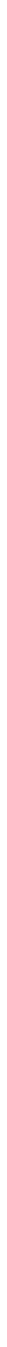
LOFT ROOM

Velux style window and radiator.

BATHROOM

White three piece suite comprising of a panelled bath with shower over, pedestal wash hand basin, low level WC, radiator and two double glazed windows to side.





**Local Authority
Council Tax Band
EPC Rating**

TBC

Houghton Le Spring

24-25 Westbourne Terrace
Houghton Le Spring
Tyne And Wear
DH4 4QT

Contact

0191 3854477
info@safeandsecureproperties.c
o.uk
safeandsecureproperties.co.uk

Agents Note: Whilst every care has been taken to prepare these particulars, they are for guidance purposes only. All measurements are approximate and are for general guidance purposes only and whilst every care has been taken to ensure their accuracy, they should not be relied upon and potential buyers/tenants are advised to recheck the measurements.