

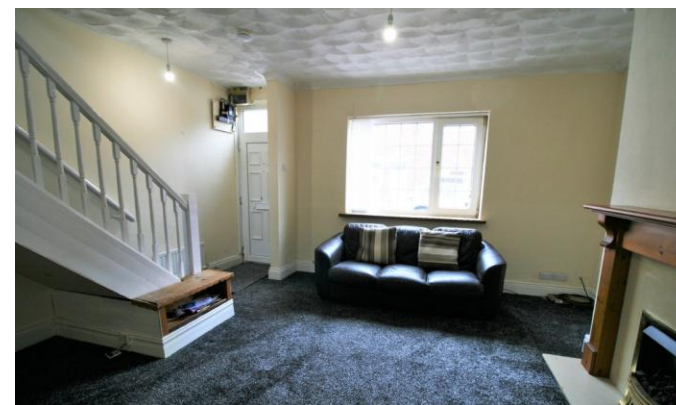


23 King Street

Birtley
Chester Le Street
DH3 1EF

£550 pcm

Two Bedrooms
Available Immediately
Unfurnished
Ideal Starter Home
Close to All Amenities
Private Rear Yard





Safe and Secure welcome to the rental market this two bedroom mid-terraced house, available immediately. Situated on King Street, Birtley- the property is a short walk from all amenities including Supermarkets and local schools. The property would make an ideal home for a range of tenants.

The property briefly comprises of: a entrance porch, lounge, kitchen, two bedrooms, modern bathroom and enclosed yard to rear.

If you are interested please give our office a call on 0191 385 4477.

LOUNGE

Staircase to the first floor, fireplace, window, radiator.

KITCHEN

Fitted wall and base units with work surfaces, sink unit, integrated electric oven and gas hob with an extractor hood, space for appliances, boiler, window, radiator.

INNER HALL

Storage cupboards, access to bathroom and rear yard.

BATHROOM

Three piece suite comprising of a corner bath with a shower over, wash hand basin, low level WC, window, radiator.



FIRST FLOOR LANDING

Window, radiator, doors leading to:

BEDROOM ONE

Window, radiator.

BEDROOM TWO

Window, radiator.

PRIVATE REAR YARD

Paved with gated access.



Local Authority
Council Tax Band
EPC Rating

C



Houghton Le Spring
24-25 Westbourne Terrace
Houghton Le Spring
Tyne And Wear
DH4 4QT

Contact
0191 3854477
info@safeandsecureproperties.c
o.uk
safeandsecureproperties.co.uk

Agents Note: Whilst every care has been taken to prepare these particulars, they are for guidance purposes only. All measurements are approximate and are for general guidance purposes only and whilst every care has been taken to ensure their accuracy, they should not be relied upon and potential buyers/tenants are advised to recheck the measurements.