



42 Blyton Avenue

Ryhope
Sunderland
SR2 0JT

£135,000

Freehold

Three Bedrooms

Semi Detached House

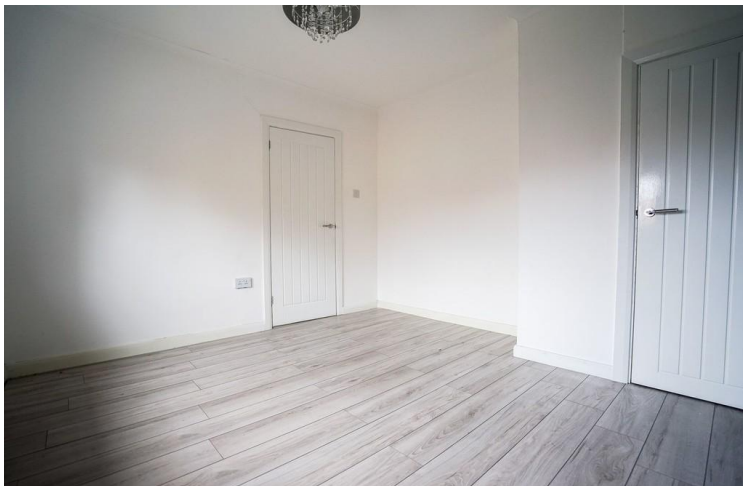
Gas Central Heating & Double Glazing

VACANT PROPERTY

Close to Local Amenities and Transport
Links

Viewing Recommended





Safe and Secure welcome to the market this Three Bedroom Semi Detached House in the popular area of Blyton Avenue, Ryhope. The property benefits from gas central heating and double glazing.

Currently tenanted, the property would be a good purchase for investors and landlords. Viewings recommended.

ENTRANCE HALL

Composite entrance door, stairs to first floor

LOUNGE

Double glazed window to front, coving to ceiling, radiator

KITCHEN

Fitted with a range of wall and base units with coordinating work surfaces over, single bowl sink and drainer unit, built in electric oven and gas hob, space for washing machine, x2 double glazed windows and door to rear garden, radiator

STAIRS TO FIRST FLOOR

BEDROOM ONE

Double glazed window to rear, radiator, built in storage cupboard

BEDROOM TWO

Double glazed window to front, radiator

BEDROOM THREE

Double glazed window to front, radiator

BATHROOM

White 3 piece suite comprising of panelled bath with shower over, pedestal wash basin, Low level wc, double glazed window to rear, heated towel rail

EXTERNALLY

To the front of the property is a lawned garden with walled boundaries.

To the rear is a garden laid mainly to lawn with paved area and fenced boundaries.



**Local Authority
Council Tax Band
EPC Rating**

C



Houghton le Spring
24-25 Westbourne Terrace
Houghton Le Spring
Tyne And Wear
DH4 4QT

Contact
0191 3854477
info@safeandsecureproperties.c
o.uk
safeandsecureproperties.co.uk

Agents Note: Whilst every care has been taken to prepare these particulars, they are for guidance purposes only. All measurements are approximate and are for general guidance purposes only and whilst every care has been taken to ensure their accuracy, they should not be relied upon and potential buyers/tenants are advised to recheck the measurements.