



## Flat 32 Cressing Place

ST5 5FJ

**Offers Over £250,000**



2



1



2



B



STEPHENSON BROWNE



Stephenson Browne are delighted to present this exceptional apartment set within a restored period building, located in The Elms, Cressing Place, Keele, Newcastle under Lyme.

This stunning property is nestled within a picturesque and highly desirable area, offering a blend of modern luxury and classic charm, ideal for those seeking a tranquil yet prestigious lifestyle.

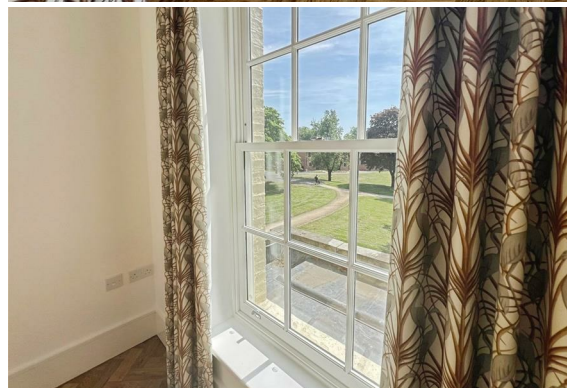
Upon entering, you will immediately notice the high-quality finishes throughout. The apartment boasts two generously sized double bedrooms, each bathed in natural light from the large sash windows. Finished in soothing neutral tones, these rooms provide a serene retreat, perfect for relaxation or hosting guests.

The heart of the home is the impressive open-plan living space, which seamlessly connects the stylish kitchen to the living and dining areas. The kitchen is equipped with integrated appliances and ample storage, making it both functional and aesthetically pleasing. This airy layout is perfect for entertaining or enjoying quiet evenings at home, enhanced by an abundance of natural light. Adjacent to this area, you will find a versatile study or small third bedroom, which boasts stunning views, overlooking the green.

The bathroom is equally well-appointed, featuring contemporary fixtures and a full-sized bath integrated shower, creating a luxurious space for unwinding. The thoughtful design extends to the ample storage options, including a separate store room, ensuring the apartment remains uncluttered and inviting. Situated in the charming village of Keele and within walking distance of Keele University, this apartment is in exceptional condition and combines the tranquillity of village life with proximity to Newcastle under Lyme. The area is known for its beautiful surroundings and strong community spirit, making it an ideal location for professionals and couples alike.

Get in touch with Stephenson Browne to book a viewing!

Council Borough: Newcastle Under Lyme  
Council Tax Band: C





**First Floor Apartment**

**Hallway**

3'6" x 13'2"

**Kitchen/Diner**

19'9" x 13'1"/1223'9"

**Study/Bedroom Three**

8'5" x 4'10"

**Bedroom One**

9'9" x 10'3"

**Bedroom Two**

14'5" x 12'8"

**Bathroom**

8'5" x 6'0"

**Storage/ Boiler Room**

4'7" x 1'9"

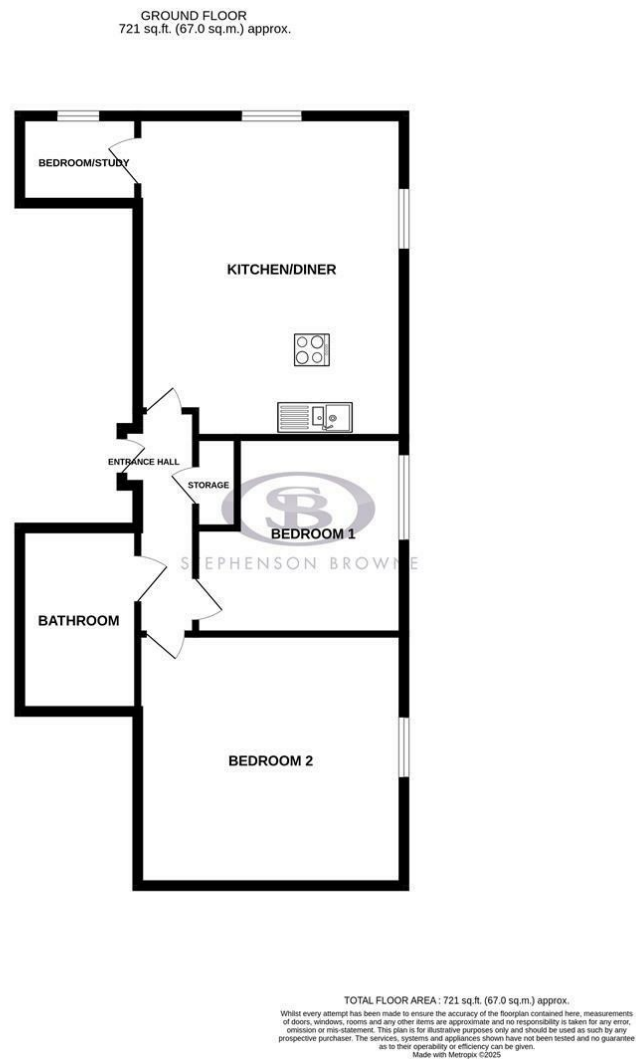




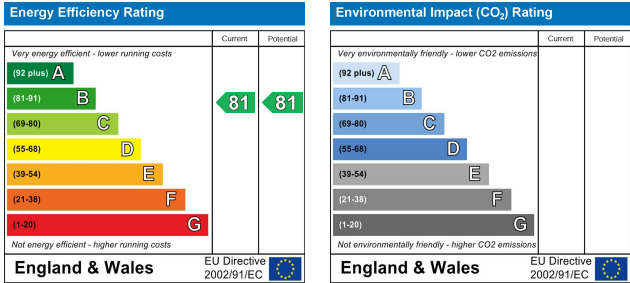
- Luxury Spacious Apartment Set Within a Beautiful Restored Period Building
- Large Sash Windows
- Open Plan Kitchen/Dining and Living room
- Storage Room
- Two Double Bedrooms & Separate Study/Single Bedroom
- Modern Fitted Kitchen and Bathroom
- High Specification Finish Throughout
- Highly Prestigious Location, The Elms, Keele, Newcastle Under Lyme
- Walking Distance from Keele University
- Designated Parking For Two Vehicles



Floor Plan



Area Map



Viewing

Please contact our Newcastle Office on 01782 625734 if you wish to arrange a viewing appointment or require further information.

NOTICE: Stephenson Browne for themselves and for the vendors or lessors of this property whose agents they are give note that: (1) the particulars are set out as a general guideline only for the guidance of intending purchasers or lessees. and do not constitute, nor constitute part of, an offer or contract; (2) all descriptions, dimensions, references to condition and necessary permissions for use and occupation, and other details are given in good faith and are believed to be correct but any intending purchasers or tenants should not rely on them as statements or representations of fact but must satisfy themselves by inspection or otherwise as to be the correctness of each theme; (3) no person in the employment of Stephenson Browne has any authority to make representation or warranty in relation to this property; (4) fixtures and fittings are subject to a formal list supplied by the vendors solicitor. Referring to: Move with Us Ltd Average fee: £123.64

56 Merrial Street, Newcastle Under Lyme, Staffordshire, ST5 2AW  
Telephone: 01782 625734 Email: sandbach@stephensonbrowne.co.uk Website: www.stephensonbrowne.co.uk