



Tilstock Road



Prices From £284,995



56 Merrial Street
Newcastle under Lyme
ST5 2AW
01782 625734

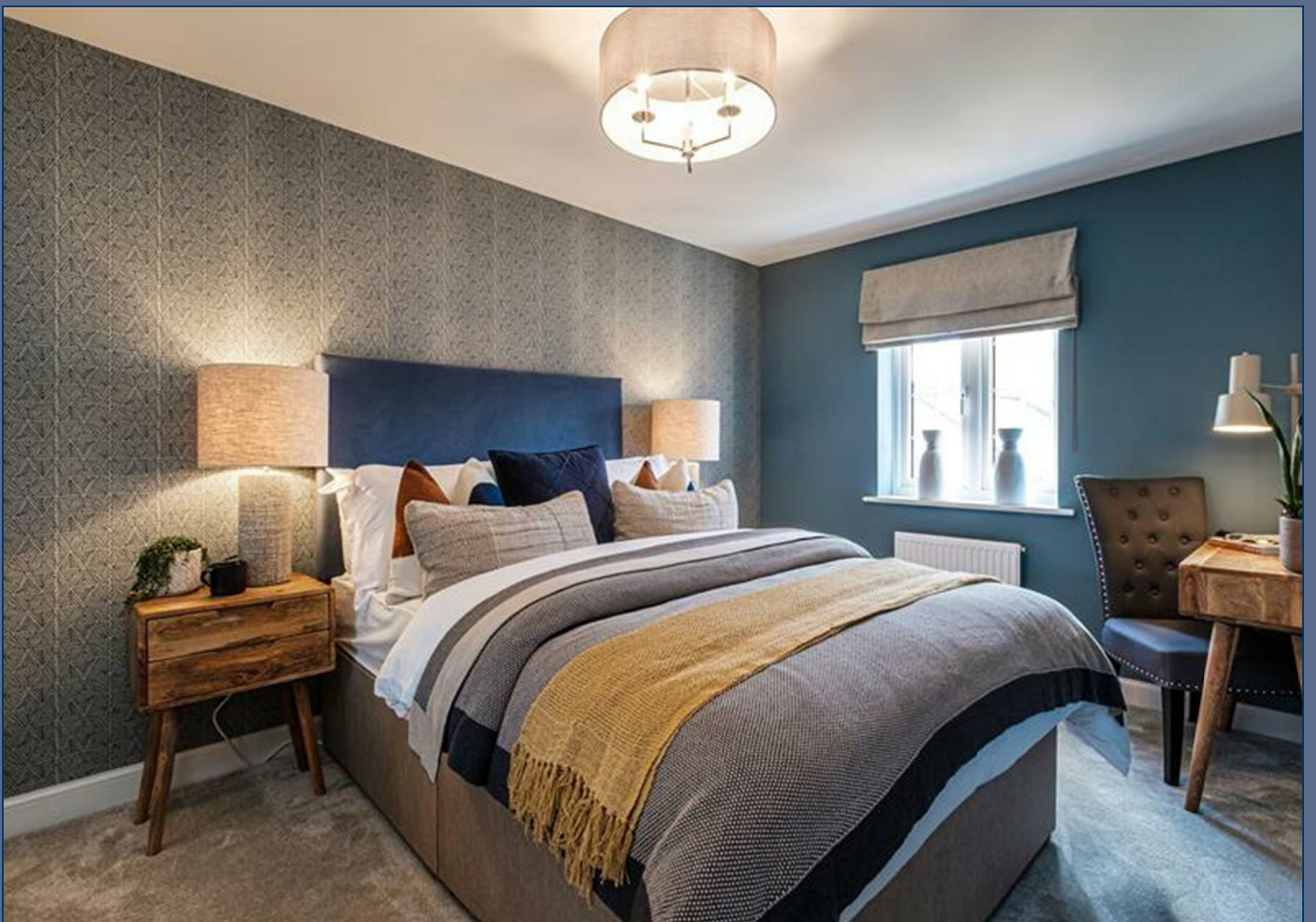


Talbot Place Tilstock Road
SY13 2BY

BRAND NEW BUILD. Constructed by Barratt Homes, The Woodcote is ideal for family living. Downstairs, an open plan living dining area with French doors lead to the garden and separate modern kitchen. On the first floor, there are three bedrooms and family bathroom, upstairs the top floor is a fantastic private space. The main bedroom has the luxury of its own en suite and dressing area.

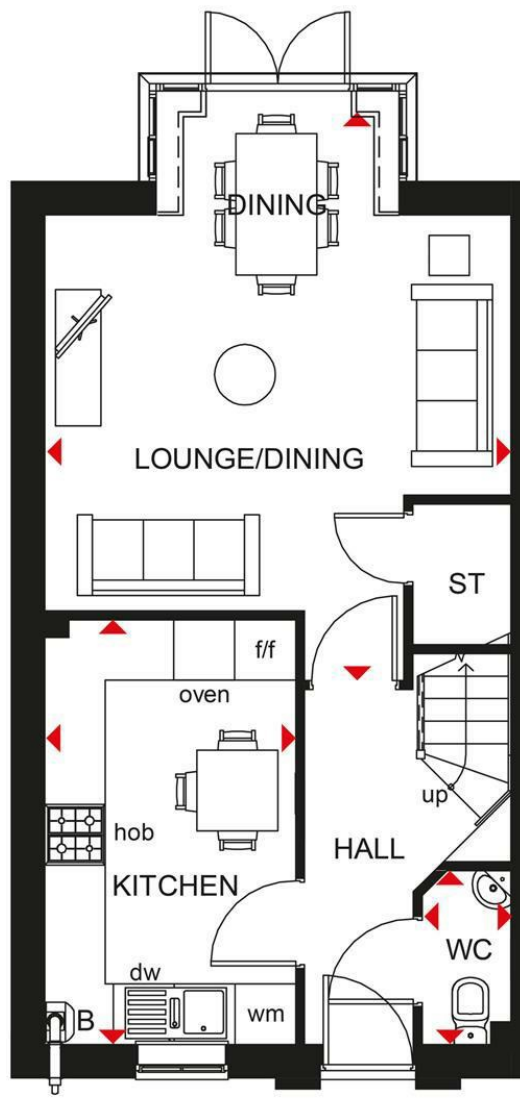


Prices From £284,995



Lounge/Dining	15'1" x 18'6" (4.603 x 5.645)
Kitchen	13'9" x 8'1" (4.211 x 2.481)
WC	5'6" x 2'9" (1.692 x 0.860)
Bedroom Two	14'5" x 8'6" (4.409 x 2.608)
Bedroom Three	12'2" x 8'6" (3.717 x 2.608)
Bedroom Four	9'1" x 6'3" (2.779 x 1.912)
Bathroom	6'11" x 6'3" (2.112 x 1.912)
Bedroom One	18'6" x 11'5" (5.645 x 3.482)
En Suite	6'3" x 8'1" (1.926 x 2.486)
Dressing Area	8'6" x 8'5" (2.594 x 2.574)





Stephenson Browne Estate Agents

Newcastle
56 Merrial Street, Newcastle under Lyme
Staffordshire, ST5 2AJ
Tel: 01782 625734

Sandbach
38 High Street, Sandbach
Cheshire, CW11 1AN
Tel: 01270 763200

Alsager
13 Crewe Road, Alsager
Stoke on Trent, ST7 2EW
Tel: 01270 883130

NOT TO SCALE These floor plans are given as a guide only. Full completed measurements and details should be verified by any intending purchasers legal representative.

NOTICE: Stephenson Browne for themselves and for the vendors or lessors of this property whose agents they are give notice that: (1) the particulars are set out as a general guideline only for the guidance of intending purchasers or lessees, and do not constitute, nor constitute part of, an offer or contract; (2) all descriptions, dimensions, references to condition and necessary permissions for use and occupation, and other details are given in good faith and are believed to be correct but any intending purchasers or tenants should not rely on them as statements or representations of fact but must satisfy themselves by inspection or otherwise as to the correctness of each theme; (3) no person in the employment of Stephenson Browne has any authority to make representation or warranty whatever in relation to this property. (4) fixtures & fittings are subject to a formal list supplied by the vendors solicitors.