



Flat 37, Adlington House High

ST5 0HZ

O.I.R.O £77,950



1



1



1



B



STEPHENSON BROWNE

A well presented and very spacious, Over-55s luxury retirement apartment. Adlington House luxury retirement apartments provide the perfect setting for an independent lifestyle with 24-hour on site care, should you ever need it and a wonderful community to become a part of.

This apartment is a fabulous one double bedroom unit, on the second floor, with large open aspect lounge diner with balcony area, a fully integral modern kitchen with integrated dishwasher, wardrobe storage, utility cupboard and walk-in shower room. Very well presented throughout with excellent proportions and thoughtful design.

To mention only a few benefits of the unique Adlington House concept, residents can enjoy audio and visual entry system to the main entrance, lifts to all floors, beautifully landscaped and manicured communal gardens, in-house subsidised restaurant and many recreational rooms to include a craft room, communal lounge and indoor hairdressing salon and a further private function room.

Contact Stephenson Browne Estate Agents for full details and to arrange a viewing appointment.

NO ONWARD CHAIN.

Tenure: Leasehold

The apartment is subject to a 125 years lease from April 1st 2014 with service charges payable at all times.

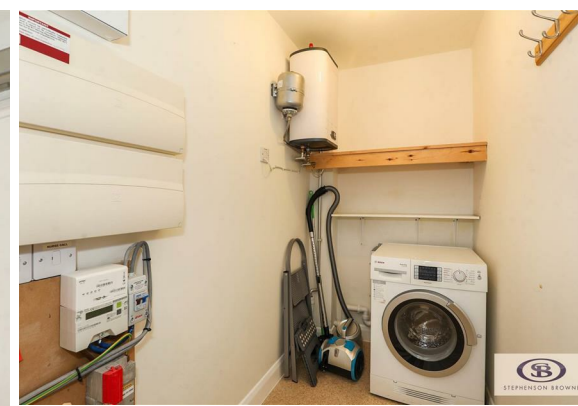
LEASE LENGTH - 125 years from 1st May 2014
SERVICE CHARGE - £583.64PCM - the monthly fee includes 24-hour staffing at the complex.

GROUND RENT - N/A

UTILITIES CHARGE - Water charges included in the service charge.

MANAGEMENT COMPANY - MHA (Methodist Homes)

NB: Full key leasehold facts and up to date wellbeing charge information available upon request.



Entrance Hallway

Lounge Diner
22'10" x 11'3"

Kitchen
8'6" x 7'10"

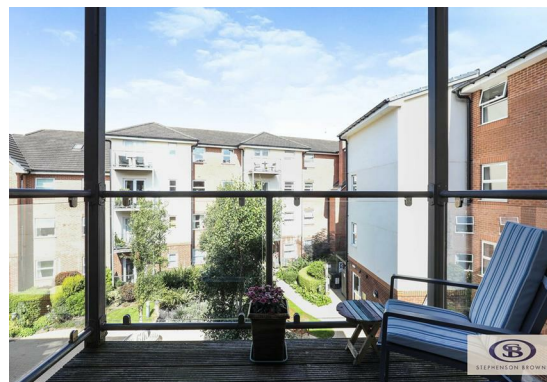
Bedroom
12'6" x 11'1"

Wet Room
8'3" x 6'3"

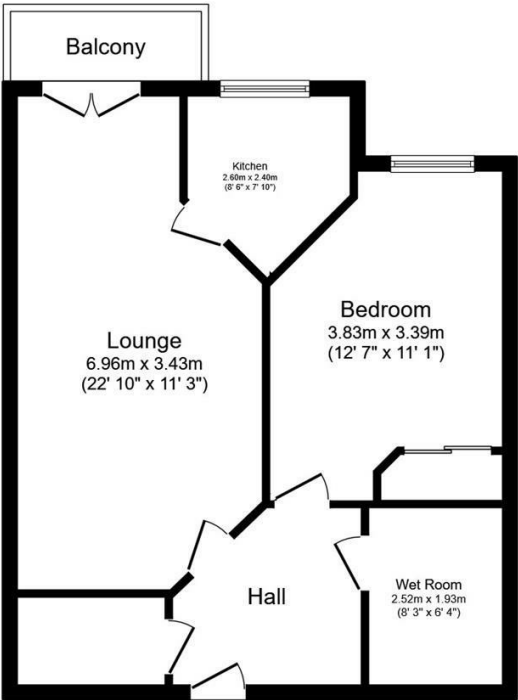
Utility Cupboard



- Bespoke Retirement Apartment
- Second Floor Apartment - Full Lift Access
- Fabulous Community Feel and On-Site Facilities and Care if needed
- Second Floor Apartment
- One Double Bedroom with Wardrobe
- Walk-In-Shower Room
- Open Plan Lounge Diner with Balcony Area
- Fully Fitted Modern Kitchen
- Central Wolstanton Location
- Over 55s Only



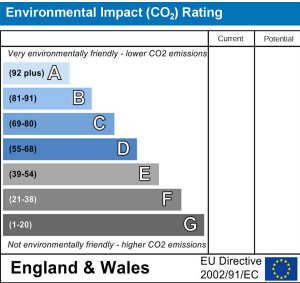
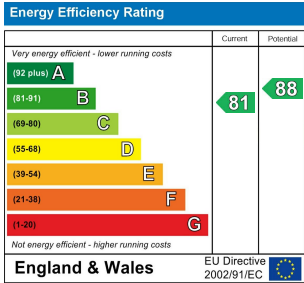
Floor Plan



Total floor area 55.3 m² (595 sq.ft.) approx

This floor plan is for illustrative purposes only. It is not drawn to scale. Any measurements, floor areas (including any total floor area), openings and orientation are approximate. No details are guaranteed, they cannot be relied upon for any purpose and they do not form part of any agreement. No liability is taken for any error, omission or misstatement. A party must rely upon its own inspection(s). Powered by www.focalagent.com

Area Map



Viewing

Please contact our Newcastle Office on 01782 625734 if you wish to arrange a viewing appointment or require further information.

NOTICE: Stephenson Browne for themselves and for the vendors or lessors of this property whose agents they are give note that: (1) the particulars are set out as a general guideline only for the guidance of intending purchasers or lessees. and do not constitute, nor constitute part of, an offer or contract; (2) all descriptions, dimensions, references to condition and necessary permissions for use and occupation, and other details are given in good faith and are believed to be correct but any intending purchasers or tenants should not rely on them as statements or representations of fact but must satisfy themselves by inspection or otherwise as to be the correctness of each theme; (3) no person in the employment of Stephenson Browne has any authority to make representation or warranty in relation to this property; (4) fixtures and fittings are subject to a formal list supplied by the vendors solicitor. Referring to: Move with Us Ltd Average fee: £123.64

56 Merrial Street, Newcastle Under Lyme, Staffordshire, ST5 2AW
Telephone: 01782 625734 Email: sandbach@stephensonbrowne.co.uk Website: www.stephensonbrowne.co.uk