



William Terrace Fegg Hayes



Offers In The Region Of £100,000



56 Merrial Street
Newcastle under Lyme
ST5 2AW
01782 625734



19 William Terrace

Fegg Hayes

ST6 6QX

Three bedroom End Terraced located in William Terrace, Fegg Hayes, Stoke-On-Trent.

Accommodation briefly comprises of lounge, fitted kitchen/diner and ground floor bathroom three piece suite.

To the first floor there are three bedrooms, two of which are double in size and a third single room.

Externally the property benefits from a small garden area to the front and an enclosed, rear garden.

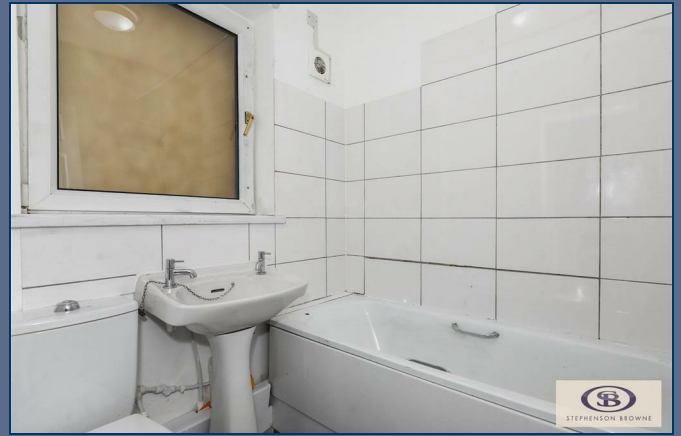
No Upward Chain.

Don't miss the opportunity to make this house your home, whether you're looking for a place to settle down or an investment opportunity, this townhouse has the potential to fulfill your needs and more. Book a viewing today and envision the possibilities that this property holds for you!

Council Borough: Stoke On Trent

Council Tax Band: A

Tenure: Freehold



Offers In The Region Of £100,000



Ground Floor

Lounge 13'1" x 10'11" (4.00m x 3.35m)

Kitchen 12'0" x 10'1" (3.66m x 3.09m)

Inner Hall

Bathroom 6'0" x 5'8" (1.83m x 1.75m)

First Floor

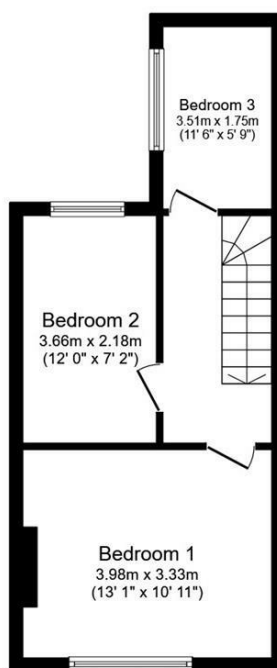
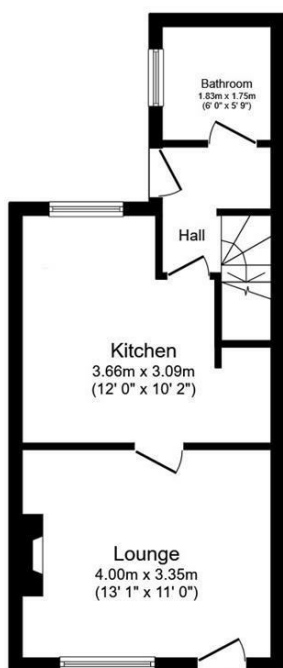
Landing

Bedroom 1 13'0" x 10'11" (3.98m x 3.33m)

Bedroom 2 12'0" x 7'1" (3.66m x 2.18m)

Bedroom 3 11'6" x 5'8" (3.51m x 1.75m)





Total floor area 67.5 sq.m. (727 sq.ft.) approx

This floor plan is for illustrative purposes only. It is not drawn to scale. Any measurements, floor areas (including any total floor area), openings and orientation are approximate. No details are guaranteed, they cannot be relied upon for any purpose and they do not form part of any agreement. No liability is taken for any error, omission or misstatement. A party must rely upon its own inspection(s). Powered by www.focalagent.com

Stephenson Browne Estate Agents

Newcastle
56 Merrial Street, Newcastle under Lyme
Staffordshire, ST5 2AJ
Tel: 01782 625734

Sandbach
38 High Street, Sandbach
Cheshire, CW11 1AN
Tel: 01270 763200

Alsager
13 Crewe Road, Alsager
Stoke on Trent, ST7 2EW
Tel: 01270 883130

NOT TO SCALE These floor plans are given as a guide only. Full completed measurements and details should be verified by any intending purchasers legal representative.

NOTICE: Stephenson Browne for themselves and for the vendors or lessors of this property whose agents they are give notice that: (1) the particulars are set out as a general guideline only for the guidance of intending purchasers or lessees, and do not constitute, nor constitute part of, an offer or contract; (2) all descriptions, dimensions, references to condition and necessary permissions for use and occupation, and other details are given in good faith and are believed to be correct but any intending purchasers or tenants should not rely on them as statements or representations of fact but must satisfy themselves by inspection or otherwise as to the correctness of each theme; (3) no person in the employment of Stephenson Browne has any authority to make representation or warranty whatever in relation to this property. (4) fixtures & fittings are subject to a formal list supplied by the vendors solicitors.