



Mucklestone Road Loggerheads



£420,000

56 Merial Street
Newcastle under Lyme
ST5 2AW
01782 625734



Shropshire Heights Mucklestone Road Loggerheads TF9 4DJ

PART EXCHANGE AVAILABLE. The Willow at Shropshire Heights is an attractive 4 BEDROOM family home that you'll love pulling up to. Featuring an OPEN-PLAN KITCHEN DINER with an Island and a choice of luxury finishes, BI-FOLD DOORS to the rear garden, Utility Room, 2 EN-SUITE Bathrooms and a Single Integral Garage.

The Willow is an attractive four bedroom detached home, which you'll love pulling up to every time you arrive home.

Off the hallway is a large lounge for you to comfortably relax in after a busy day. The open plan kitchen/diner at the rear will quickly become the hub of your family home. You'll find space for both dining and family time thanks to the open plan layout. The kitchen island not only provides you with additional surface space, but also a great area for socialising with friends.

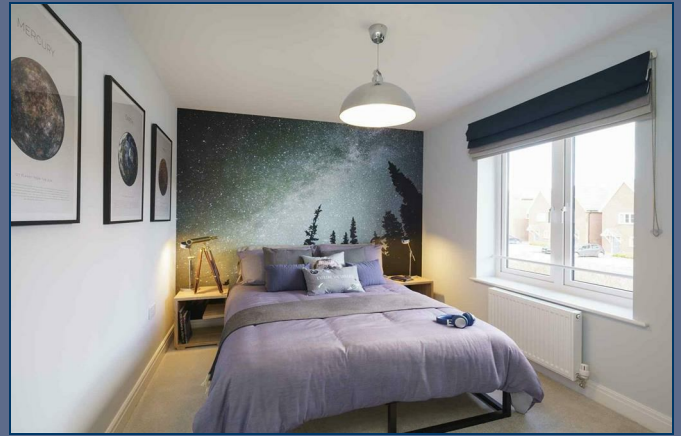
You won't find yourself short of storage, thanks to a handy understairs cupboard, further kitchen storage and a separate utility room. Bi-fold doors lead to the garden, creating a brilliant space for summer gatherings. The ground floor w/c is also a great addition too, especially when you have guests.

On the equally spacious first floor, you'll find 4 bedrooms to choose from. Both the master and second bedroom come accompanied by private en suites, while the rest of the family have a bathroom, so battling over the bathroom in the morning really will become a thing of the past.

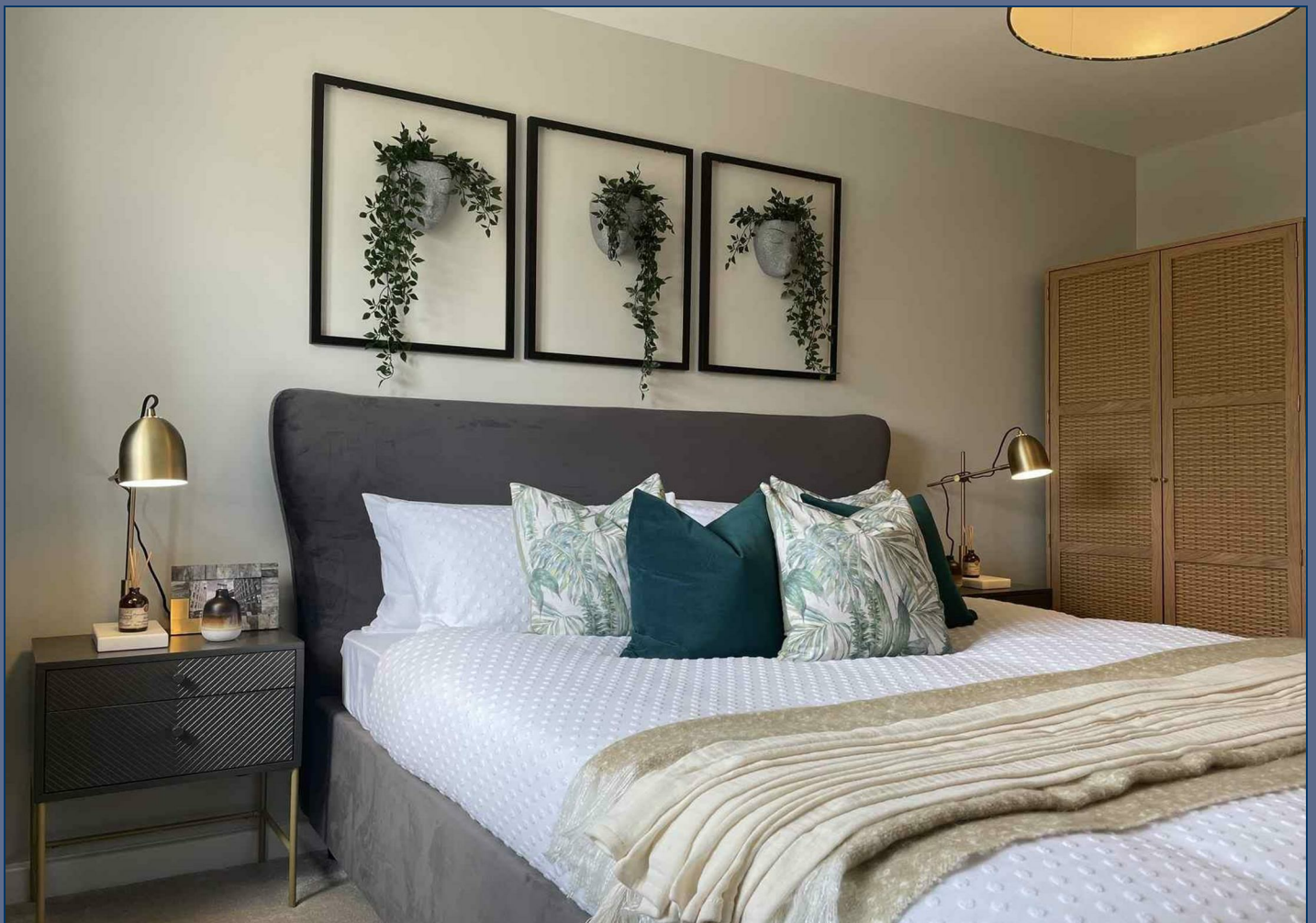
If you're looking for even more storage space, you'll be spoiled for choice in The Willow thanks to a single integrated garage, how you choose to use the space is completely up to you.

The Willow (Plot 115)- **PART EXCHANGE AVAILABLE**
Have you got a home to sell? Part Exchange is available on this plot.

UPGRADES INCLUDED!
Induction Hob, Quartz Worktops, Fitted Wardrobes to Bedroom 1



£420,000

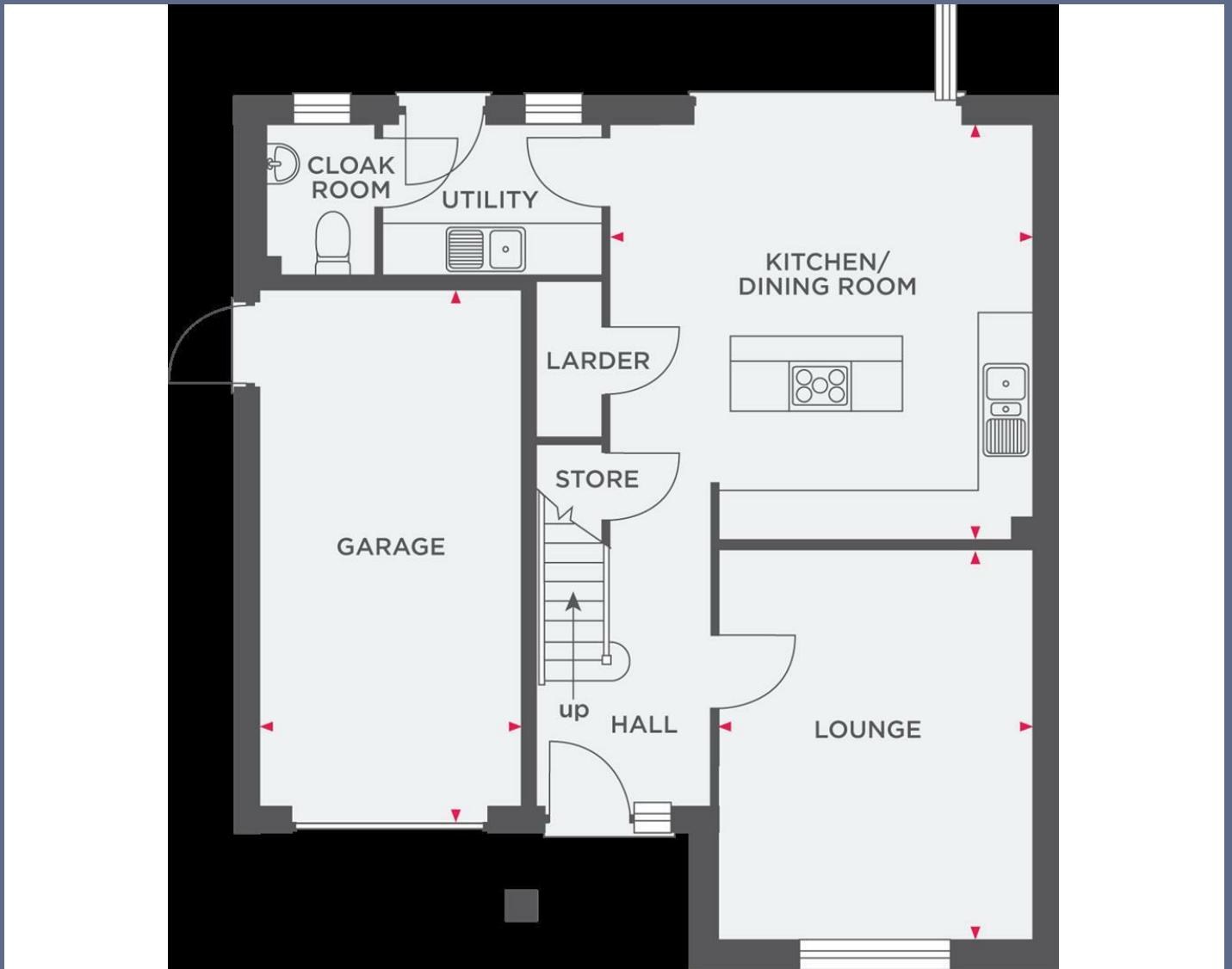


- Lounge 11'10" x 14'10" (3.610 x 4.539)
- Kitchen/Dining Room 15'11" x 15'9" (4.873 x 4.810)
- Garage 10009'10" x 20488'10" (3051 x 6245)
- Bedroom One 11'10" x 15'6" (3.610 x 4.744)
- Bedroom Two 10'1" x 11'8" (3.087 x 3.567)
- Bedroom Three 9'9" x 11'6" (2.987 x 3.515)
- Bedroom Four 10'1" x 10'2" (3.087 x 3.118)

Shropshire Heights Development

The Surrounding Area





Stephenson Browne Estate Agents

Newcastle
56 Merial Street, Newcastle under Lyme
Staffordshire, ST5 2AJ
Tel: 01782 625734

Sandbach
38 High Street, Sandbach
Cheshire, CW11 1AN
Tel: 01270 763200

Alsager
13 Crewe Road, Alsager
Stoke on Trent, ST7 2EW
Tel: 01270 883130

NOT TO SCALE These floor plans are given as a guide only. Full completed measurements and details should be verified by any intending purchasers legal representative.

NOTICE: Stephenson Browne for themselves and for the vendors or lessors of this property whose agents they are give notice that: (1) the particulars are set out as a general guideline only for the guidance of intending purchasers or lessees, and do not constitute, nor constitute part of, an offer or contract; (2) all descriptions, dimensions, references to condition and necessary permissions for use and occupation, and other details are given in good faith and are believed to be correct but any intending purchasers or tenants should not rely on them as statements or representations of fact but must satisfy themselves by inspection or otherwise as to the correctness of each theme; (3) no person in the employment of Stephenson Browne has any authority to make representation or warranty whatever in relation to this property. (4) fixtures & fittings are subject to a formal list supplied by the vendors solicitors.