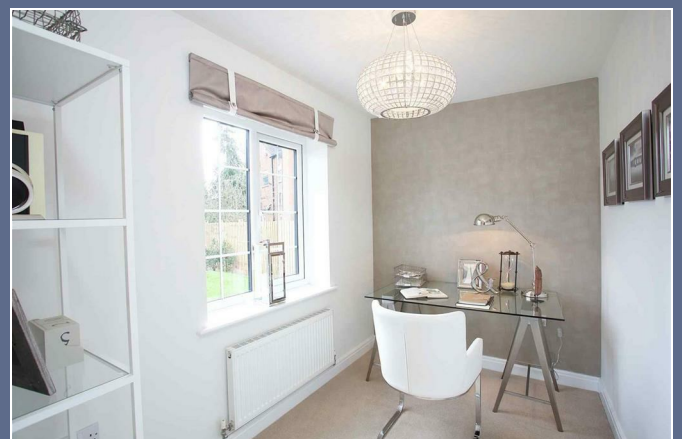




Mucklestone Road
Loggerheads



£399,950

56 Merrial Street
Newcastle under Lyme
ST5 2AW
01782 625734



Shropshire Heights Mucklestone Road Loggerheads TF9 4DJ

PART EXCHANGE AVAILABLE. The Hornbeam at Shropshire Heights is an attractive 4 BEDROOM family home. Featuring an OPEN-PLAN KITCHEN DINER with choice of luxury finishes, BI-FOLD DOORS from the Lounge, Utility Room, Study, EN-SUITE from the Master Bedroom and a Detached Single Garage.

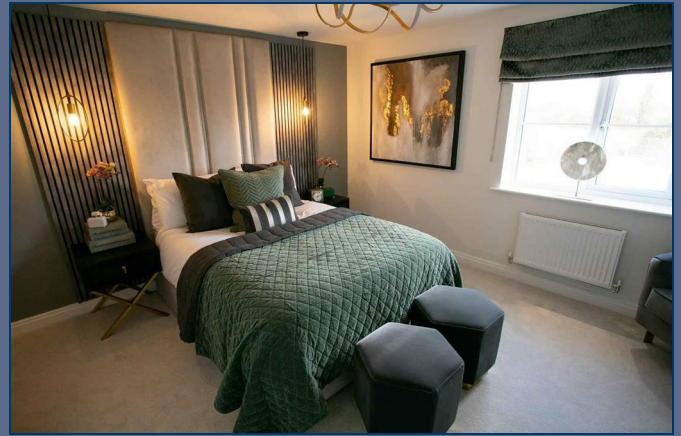
The Hornbeam is an attractive four bedroom detached home, which you'll love pulling up to every time you arrive home.

Step inside and you'll be greeted by an open hallway which leads to a large open plan kitchen/diner, with sociable family area. You'll find space for both dining and family time thanks to the open plan layout, this space is sure to become the heart of your family home. You won't find yourself short of storage, thanks to a handy understairs cupboard and a separate utility room with additional surface space, which you can never have enough of.

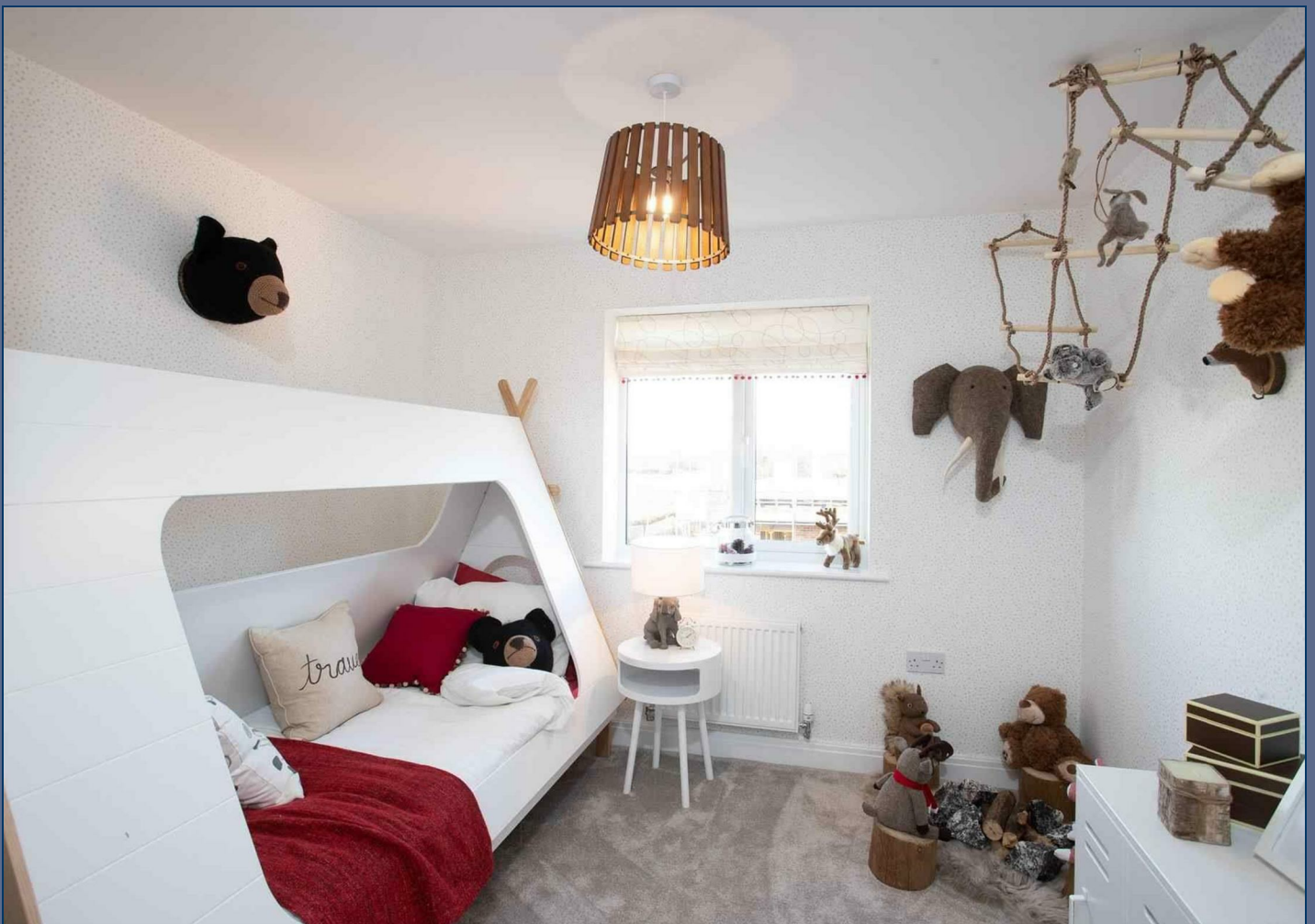
If you're looking to comfortably work from home, you'll find just what you need across the hallway in the ground floor study, so there's no need to compromise on the family and living space within your home. Downstairs, you'll also discover a lounge with bi-fold doors that lead to the garden. Relax with the family after a busy and let the fresh air flow throughout your home. The cloakroom on the ground floor is an added bonus, especially handy when you have guests.

On the first floor, there are four good-sized bedrooms. The master bedroom comes with a private en-suite shower room, while the rest of the family have a family bathroom with separate shower to share. Battling over bedrooms will become a thing of the past, due to the generous size of the second, third and fourth bedroom.

The Hornbeam (Plot 117)- PART EXCHANGE AVAILABLE
Have you got a home to sell? Part Exchange is available on this plot.



£399,950

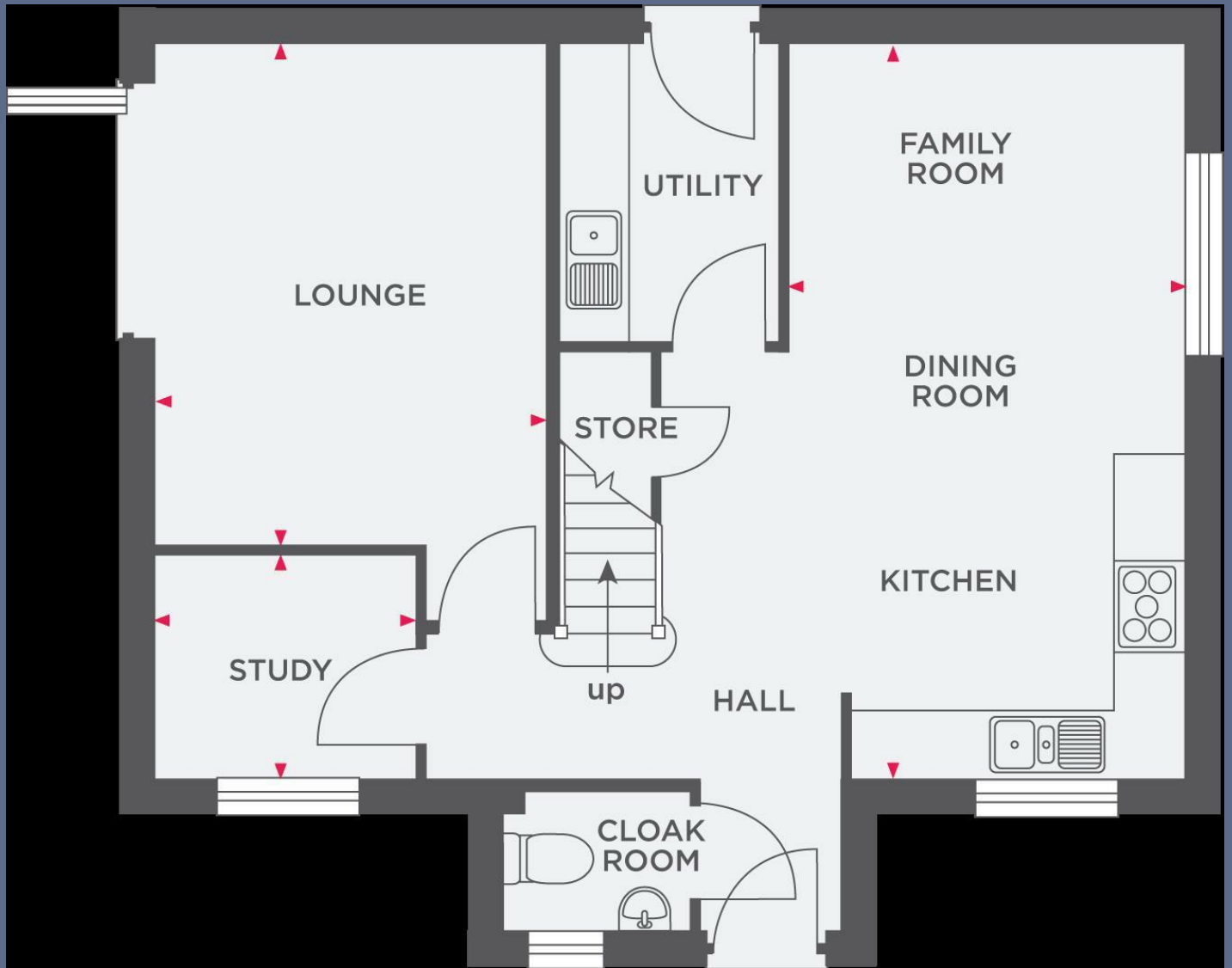
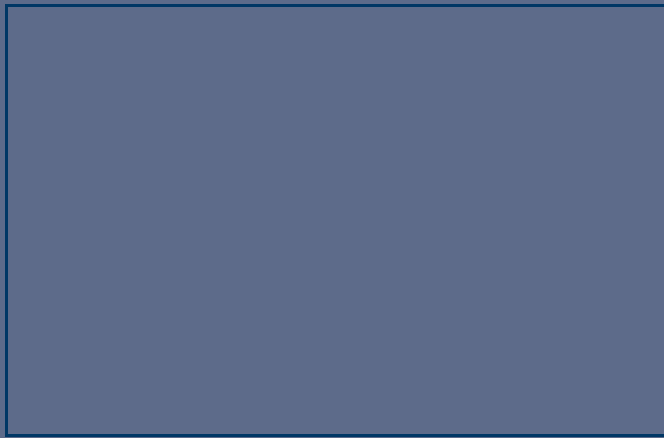


Lounge	11'1" x 14'3" (3.400 x 4.363)
Kitchen/Dining Room	11'2" x 21'0" (3.405 x 6.423)
Study	7'4" x 6'5" (2.255 x 1.973)
Bedroom One	11'4" x 15'0" (3.462 x 4.584)
Bedroom Two	9'7" x 10'2" (2.925 x 3.122)
Bedroom Three	9'8" x 10'6" (2.949 x 3.212)
Bedroom Four	9'6" x 10'8" (2.927 x 3.281)

Shropshire Heights Development

The Surrounding Area





Stephenson Browne Estate Agents

Newcastle
56 Merial Street, Newcastle under Lyme
Staffordshire, ST5 2AJ
Tel: 01782 625734

Sandbach
38 High Street, Sandbach
Cheshire, CW11 1AN
Tel: 01270 763200

Alsager
13 Crewe Road, Alsager
Stoke on Trent, ST7 2EW
Tel: 01270 883130

NOT TO SCALE These floor plans are given as a guide only. Full completed measurements and details should be verified by any intending purchasers legal representative.

NOTICE: Stephenson Browne for themselves and for the vendors or lessors of this property whose agents they are give notice that: (1) the particulars are set out as a general guideline only for the guidance of intending purchasers or lessees, and do not constitute, nor constitute part of, an offer or contract; (2) all descriptions, dimensions, references to condition and necessary permissions for use and occupation, and other details are given in good faith and are believed to be correct but any intending purchasers or tenants should not rely on them as statements or representations of fact but must satisfy themselves by inspection or otherwise as to the correctness of each theme; (3) no person in the employment of Stephenson Browne has any authority to make representation or warranty whatever in relation to this property. (4) fixtures & fittings are subject to a formal list supplied by the vendors solicitors.