

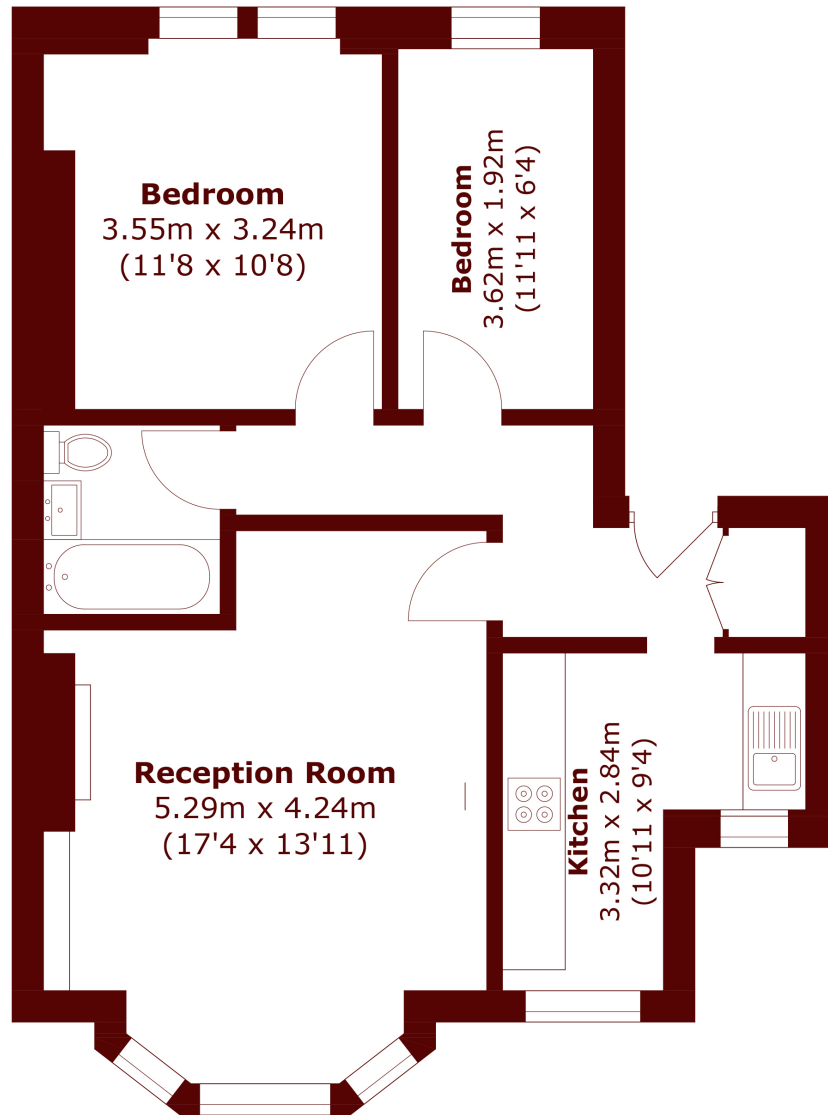


Brondesbury Villas, NW6

£2,000 pcm



- Two Double Bedrooms
- First Floor Flat
- Separate Kitchen / Reception
- Double Height Ceilings
- Wooden Floors
- Close to Transport



Total area (approx.): 56.8 sq. m (611.4 sq. ft)

Marsh & Parsons Queens Park

56 Salusbury Road, London,
NW6 6NN
020 7624 4513