

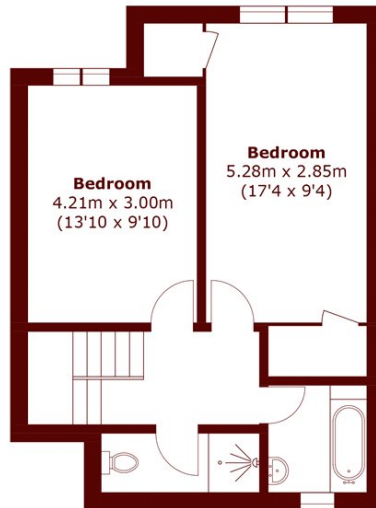


St. Laurence Close, NW6

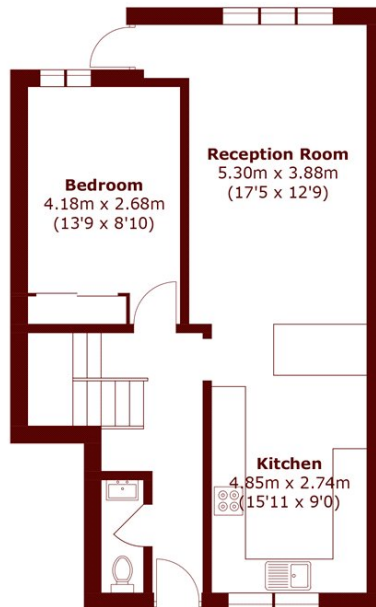
£2,750 pcm



- Three Double Bedrooms
- Very Spacious
- Off-Street Parking
- Maisonette
- Communal Garden
- Close to Queen's Park



First Floor



Ground Floor

Total area (approx.): 100.4 sq. m (1,080.7 sq. ft)

Marsh & Parsons Queens Park

91 Salusbury Road, London,
NW6 6NH
020 7624 4513